

# Alurail

## Module profiles, divided



ARPMG 00/42-245

Order no.: 87132450

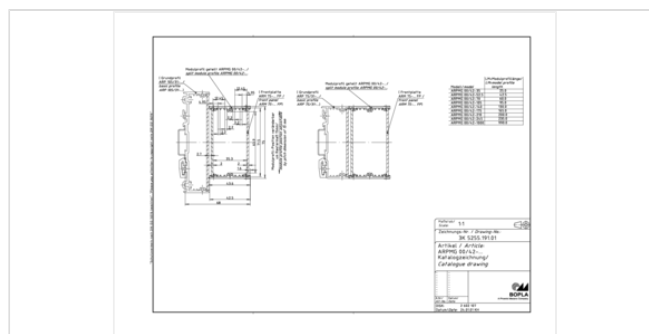
\* = Available on request.

## Dimensions

Dimensions

43.1 x 75 x 235 mm

Product drawing



## Characteristics

Colour of enclosure group

Natural-coloured anodised

Protection class

IP 40

Enclosure Material

Extruded profiles: Al Mg Si 0.5, anodised; profile caps: polyamide 6.6 FR; for details see Technical Information

Scope of delivery

Module profile, 2 parts

Note

20.10.2022

C = profile length; special lengths and module bridges for partial module mounting on request. Module caps and front panels as accessories.

## Technical documentation / Downloads

---

### Technical drawings

3D product data in STEP format: 87132450 ARPMG-00-42-245.stp (160.8 KB)

Product drawing in PDF format: 87132450 ARPMG-00-42-245.pdf (62.1 KB)

Product drawing in DXF format: 87132450 ARPMG-00-42-245.dxf (580.6 KB)

### Product information

alurail en.pdf (1.1 MB)

Maximum Load DIN Rail enclosures EN.pdf (110.3 KB)

## Important!

---

To compensate for pressure when temperatures change and cause moisture in the enclosure, we recommend that you use a pressure compensation element.

» [Additional information](#)