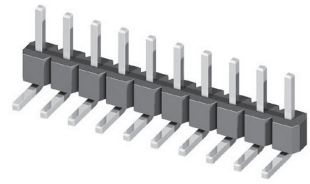
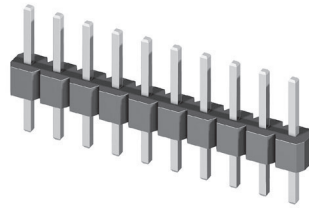


CH11 Series 2.0mm(.079") Single Row Pin Headers

☉ Mate with CB22 series

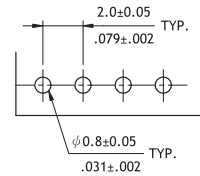
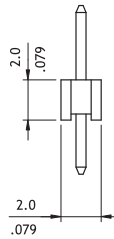
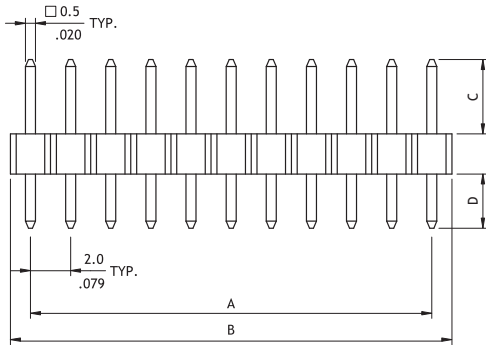


P/N CH11**2VA00-NH



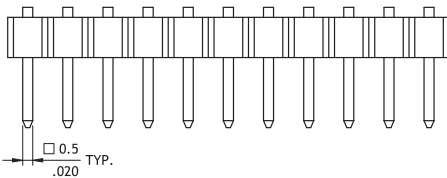
A = 2.0 x No. of Spaces
B = A + 2.0
Pin overall length 30.0mm max.

Option Code	Pin Dimension	
	C	D
00	3.9(.154)	2.8(.110)
01	6.8(.268)	3.0(.118)
02	9.0(.358)	2.0(.079)
03	8.0(.315)	3.0(.118)



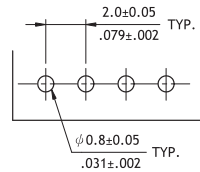
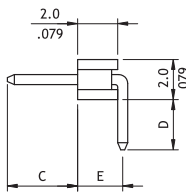
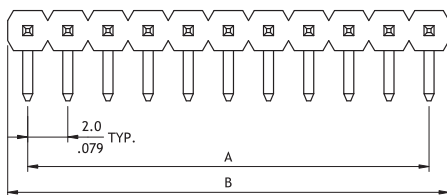
Recommended PCB Layout

P/N CH11**2HA00-NH



A = 2.0 x No. of Spaces
B = A + 2.0

Option Code	Pin Dimension		
	C	D	E
00	3.5(.138)	2.5(.098)	2.25(.089)



Recommended PCB Layout

Ordering Code

① CH ② 11 ③ 40 ④ 2 ⑤ V ⑥ A ⑦ 00 - NH

- ① Series No.
- ② No. of Circuits: 02 to 40
- ③ Plating Code: 2 = Gold flash over Nickel
- ④ Tail & Mounting Style: V = Straight DIP Type
H = Right Angle DIP Type
- ⑤ Insulator Material & Color:
A = Nylon 6T UL 94V-0, Color Black
- ⑥ Other Options: 00 = Standard
*See option code table
*Consult manufacturer for customized pin length
- ⑦ Process: -NH = For Lead Free soldering process and Halogen-Free
*Empty Code 7, if requesting non Halogen-Free material