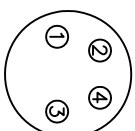
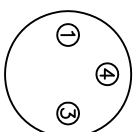
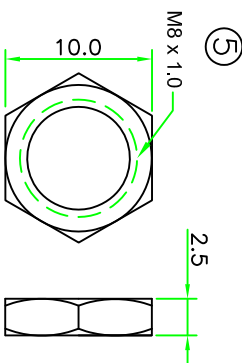
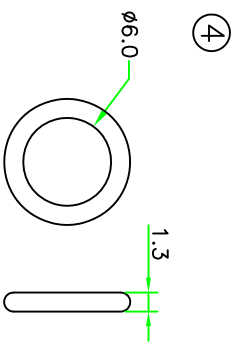
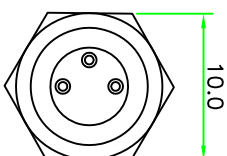
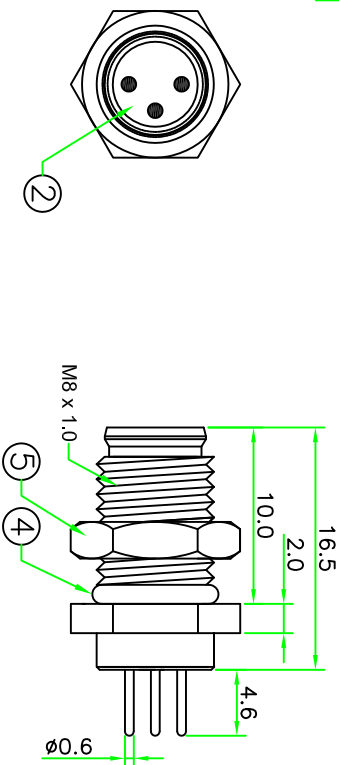
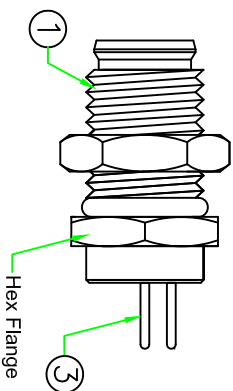


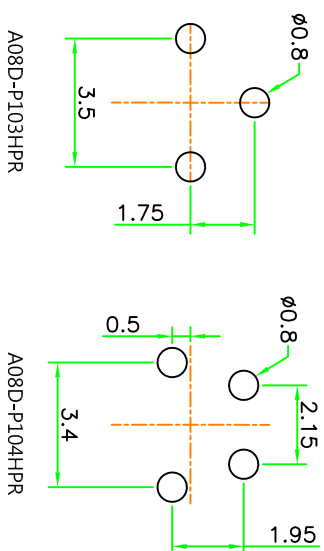
RECOMMENDED  
PANEL CUT-Off

RoHS  
IP67



A08D-P103HPR A08D-P104HPR  
PIN ASSIGNMENT FRONT VIEW

PIN LAYOUT PCB



- NOTES:
- ELECTRICAL CHARACTERISTICS:  
CURRENT RATING: <math>< 4A</math>  
TEMPERATURE RANGE:  $-25^{\circ}C$  TO  $+90^{\circ}C$   
DIELECTRIC WITHSTANDING VOLTAGE:  
500V AC FOR ONE MINUTE
  - HOW TO ORDER: A08X-P1XXHPR  
03 - 3 PINS  
04 - 4 PINS  
D - CURRENT RATING 4A

5	Hex Nut	Nylon + GF.		1	
4	O-Ring	Silicon, $\phi 6.0 \times 1.3mm$ .	BLACK	1	
3	Pin Contact	Brass, Male Pin, Gold Plated 6u".		N	
2	Connector Body	M8 Male connector insert, NYLON+GF.	BLACK	1	
1	SHELL	Nylon + GF.		1	
No.	PART NAME	DESCRIPTION	COLOR	QTY	REMARKS

		<b>HOLIN</b> HTP ASIA TECHNOLOGY CO., LTD. 禾凌科技 股份有限公司	
	SCALE 2:1	TITLE M8 A Code MALE Plastic PCB Type Rear Mount Connector	P/N: A08X-P1XXHPR
UNLESS OTHERWISE SPECIFIED TOLERANCES: $x \pm 0.1$ $xx \pm 0.05$ $xxx \pm 0.03$ ANGLE $\pm 1^{\circ}$	UNIT: mm SHEET 1/1	DR: <i>Stanley</i> CH: <i>Michael</i> AP:	DWG.NO: A08X-P1XXHPR
REV. A	SHEET 1/1	DWG.NO: A08X-P1XXHPR	AP:

REV.	DESCRIPTION	DATE
A	ISSUE	Nov/23/2004