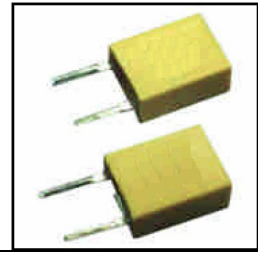


CERAMIC RESONATOR

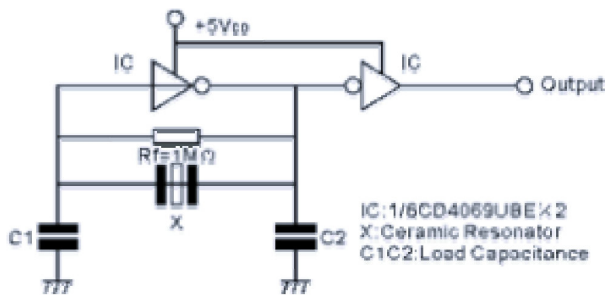
DIP AND SMD TYPE



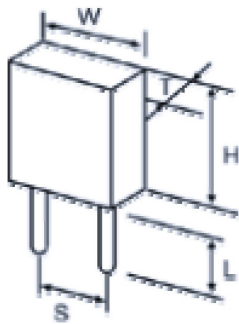
ELECTRICAL CHARACTERISTICS

Part Number		Frequency Accuracy(25°C)	Resonant Impedance	Frequency Stability	Aging for ten years	Capacitance	
DIP Type	SMD Type					C1	C2
CR1000	CR1000	±0.5%	<70	+/-0.3%	+/-0.3%	100	100

TEST CIRCUIT FOR MOSIC



DIMENSIONS (MM)

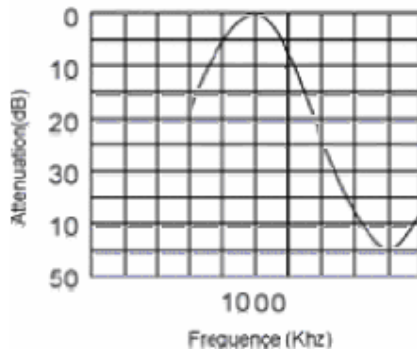


Frequency Range(KHz)	Width W(mm)	Thickness T(mm)	Height H (mm)	Lead Space S(mm)	Lead Length L(mm)
700-1250	5.2	2.8	6.8	2.5	3.5

CERAMIC RESONATOR

DIP AND SMD TYPE

CHARACTERISTICS



DIMENSIONS OF SMD TYPE (MM)

