

BOS

BOS 401/401 ASC



BOS 401-9005

Order no.: 34401000

* = Available on request.

Characteristics

Colour of enclosure group

Black, similar to RAL 9005

Protection class

IP 40

Enclosure Material

ABS, seal made of CR; for details see Technical Information

Scope of delivery

Lid, base, screws

For BOS 400 ASC, plus integrated clip bearing and bow

Note

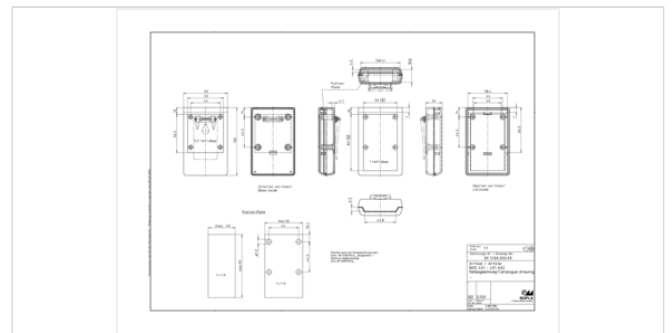
[34165572](#)). Wall fitting for ASC types: see general accessories.

Dimensions

Dimensions

100 x 65 x 24 mm

Product drawing



Technical documentation / Downloads

Technical drawings

3D product data in STEP format: 34401000 BOS-401.stp (727.9 KB)

Drawing for mechanical processing: 34401000 BOS-401-G.dxf (466.8 KB)

Milling contours are shown here as a DXF file. (Sub D, USB, HDMI, cable glands, ...)

Product drawing in PDF format: 34401000 BOS-401.pdf (70.8 KB)

Product drawing in DXF format: 34401000 BOS-401.dxf (648.0 KB)

Product information

19.10.2022

Important!

To compensate for pressure when temperatures change and cause moisture in the enclosure, we recommend that you use a pressure compensation element.

» Additional information

Matching accessories



Battery holders

34165572 BH 2MC

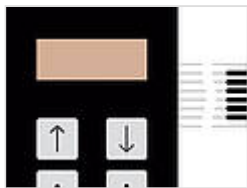
For 2 micro batteries (LR03, R03, AM4, E92, AAA), connection with soldering tags



Screws (SHR) and distance bolts (DIBLZ) for mounting bosses in plastic enclosures

59006190 SHR Z KA25x6

SD = 2.5 / ND = 2.0 / KD = 4.4



Membrane keypad for BOS 400/401, with 6 keys

70344006* FT 40006 D