

# CombiCard 1000-3000 / CombiSet 500

## CC 500



CC 500

Order no.: 19050000

12 HP useful width

\* = Available on request.

### Characteristics

Colour of enclosure group

light grey/graphite grey

Protection class

IP 65

Enclosure Material

ABS; PC (only crystal-clear lids), seal made of EPDM; for details see Technical Information

Scope of delivery

Base element and rear element, upper and lower guide blocks, tapped strips, screws

### Dimensions

Dimensions

68 x 136 x 225.5 mm

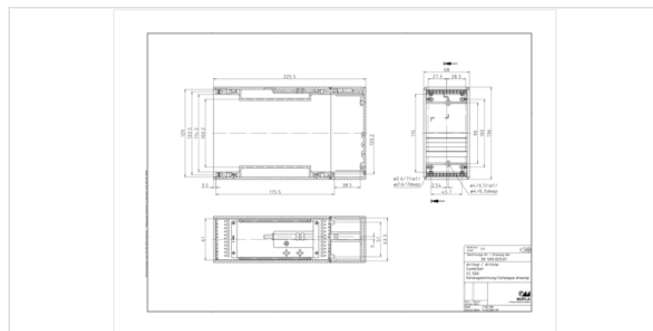
U

3

HP

12

Product drawing



### Technical documentation / Downloads

Technical drawings

3D product data in STEP format: 19050000 CC-500.stp (7.1 MB)

Product drawing in PDF format: 19050000 CC-500.pdf (63.6 KB)

Product drawing in DXF format: 19050000 CC-500.dxf (1.1 MB)

19.10.2022

## Product information

combicard-1000-3000-combiset-500 en.pdf (2.0 MB)

Maximum Load DIN Rail enclosures EN.pdf (110.3 KB)

## Important!

---

To compensate for pressure when temperatures change and cause moisture in the enclosure, we recommend that you use a pressure compensation element.

» Additional information

## Matching accessories

---



Cylinder lock / hand knob for retro-fitting in the snap-lock mechanism

21008310 SHLO-302

Cylinder lock



Card guides for 19" internal constructions

39302000 KF 1230



Card retainers for card guides KF 1230

39301000 KS 1230



Wall frame for CC 500

39001000 CC 500 WR



Snap foot for top hat rails DIN EN 60715 TH 35 for insertion into the grooves in the rear lid, polyamide

39005000 CC 500 TS



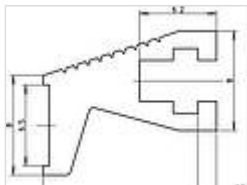
Mounting set for connectors DIN EN 60603-2 (previously DIN 41612), aluminium

39004000 CC 500 MS



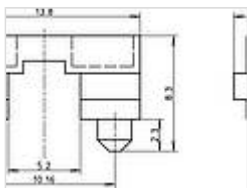
Plug-in front panels, front natural-coloured anodised aluminium, passivated on rear, incl. handles, plastic, UL 94 V 0, light grey

- 86810037 ST/M 310
- 86803037 ST/M 303
- 86804037 ST/M 304
- 86805037 ST/M 305
- 86806037 ST/M 306
- 86808037 ST/M 308
- 86812037 ST/M 312



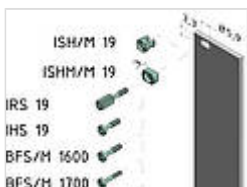
Handle profile, natural-coloured anodised aluminium, metre profile

- 86081740 GRL/M 1000-AL



Fixing piece, plastic, black, for fixing the handle profile GRL to the front panel

- 86081750 FX/M



Mounting material for part front panels and plug-in units

- 86000270 BFS/M 2700 Knurled screw without slot, SHR R M 2.5x12.3x6.5-SPx25.3, anodised steel, for PF/M with long lip
- 86000220 BFS/M 2200 Knurled screw without slot, SHR R M 2.5x12.3x6.5-SPx18.3, nickel-plated steel
- 86080510 ISH/M 19 Plastic screwholder, PA 6, grey
- 86080500 ISHM/M 19 Metal screw holder, stainless steel (1.4305), for conductive contacting for riveting to the front panel
- 54700420 IRS 19 Slotted knurled screw, collar screws SHR R M2.5x11.3x6.3-SP
- 54700410 IHS 19 Collar screws SHR Z M2.5x11.3x6.3-SP, slotted-head screw
- 86000160 BFS/M 1600 Collar screws, SHR Z M 2.5x12.3x6.5-SP, nickel-plated steel, for front panels
- 86000170 BFS/M 1700 Collar screws, SHR Z M 2.5x12.3x6.5-SP, nickel-plated steel, for front panels, torx 8



PCB holder and fixing material

- 86080020 LKH/M 02 With 4 through holes for fixing front panels and circuit boards
- 86080030 LKH/M 03 With 2 M 2.5 threads for fixing of front panels and circuit boards
- 86000190 BFS/M 1900 SHR Z M 2.5 x 8, anodised steel, cross-head, for FX/M, LKH/M 03



Interzoll PRO frame-type plug-in units, 3 U, natural-coloured anodised aluminium front panel, colourless passivated aluminium side profiles, galvanised steel cover plates, plain, galvanised steel rear panel with one slot, 3 U

- 85808311 IZK/M 16308-RW1-P
- 85810311 IZK/M 16310-RW1-P
- 85812311 IZK/M 16312-RW1-P



Cover plates, perforated, 1mm, galvanised sheet steel, for frame-type plug-in units, 3 U

86090812 IZK/M 16008-ADL-P  
86091012 IZK/M 16010-ADL-P  
86091212 IZK/M 16012-ADL-P



Cover plates, perforated, 1mm, galvanised sheet steel, for PRO frame-type plug-in units, 3 U, to accommodate card guides

86090813 IZK/M 16008-ADL-KF-P  
86091013 IZK/M 16010-ADL-KF-P  
86091213 IZK/M 16012-ADL-KF-P



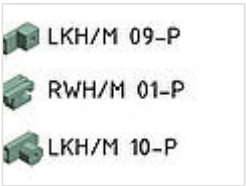
Card guides for cover plates IZK/M-ADL-KF, plastic, UL 94 V0, red

86216030 IZK/M KF-160-P



Rear panel open, galvanised sheet steel, for IZK/M frame-type plug-in units

86090833 IZK/M 00308-RWO-P  
86091033 IZK/M 00310-RWO-P  
86091233 IZK/M 00312-RWO-P



PCB and rear panel holder

86080090 LKH/M 09-P  
86080110 LKH/M 10-P  
86080120 RWH/M 01-P