



for

LED

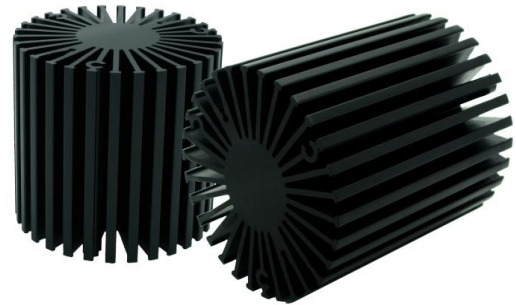


*SimpoleD*

### SimpoleD-5850 Modular Passive LED Cooler $\Phi$ 58mm

#### Features VS Benefits

- \* Mechanical compatibility with direct mounting of the LED modules to the LED cooler and thermal performance matching the lumen packages.
  - \* Thermal resistance range  $R_{th}$  3.7°C/W.
  - \* Modular design with mounting holes foreseen for direct mounting of a wide range of LED modules and COB's:
  - \* Diameter 58mm - Standard height 50mm , Other heights on
  - \* Extruded from highly conductive aluminum.
  - \* 2 standard colors - clear anodized - black anodized
- Zhaga Book 3 Spot Light Modules: Bridgelux , Citizen , Cree , Tridonic,Lumileds  
Osram,Lustrous,LG Innotek,Seoul,SHARP,SamSung .....



- 1) Bridelux ESS, V8 and V6, V-series
- 2) Citizen CLL022-CLU024, CLL032-CLU034;
- 3) Cree XLamp CXA13xx, CXA15xx;
- 4) Lumileds Luxeon COB's 1203,1204,Luxeon K arrays
- 5) Osram Soleriq S13, S19;
- 6) Seoul Semiconductor ZC6, ZC12, ZC18;
- 7) Tridonic TALEXXmodule SLE Modules;
- 8) LG Innotek LEMWM18 10W, 13W, 17W;
- 9) Edison EdiPower EdiLex SLM and EdiLex II COB LED engines;
- 10) Lustrous LUSTRON 6 series LL604F, LL608D, LL613F, LL620F;
- 11) Prolight Opto PABS, PABA, PACB, PANA;
- 12) SHARP Mini Zenigata and Mega Zenigata LED
- 13) Vossloh-Schwabe LUGA Shop LED engines.
- 14) SamSung LC013 B LED engines.

#### Order Information

Example:SimpoleD-5850-B-#

Example:SimpoleD-58 1 - 2 - 3

- 1 Height (mm)
- 2 Anodising Color  
B-Black  
C-Clear  
Z-Custom
- 3 Mounting Options - see details Combinations available  
Ex.order code - 12  
means option 1 and 2 combined



MingFa recommends the use of a high Thermal conductive interface between the LED Module and the LED cooler. Either thermal grease, A thermal pad or a phase change thermal pad Thickness 0.1-0.15mm is recommended.



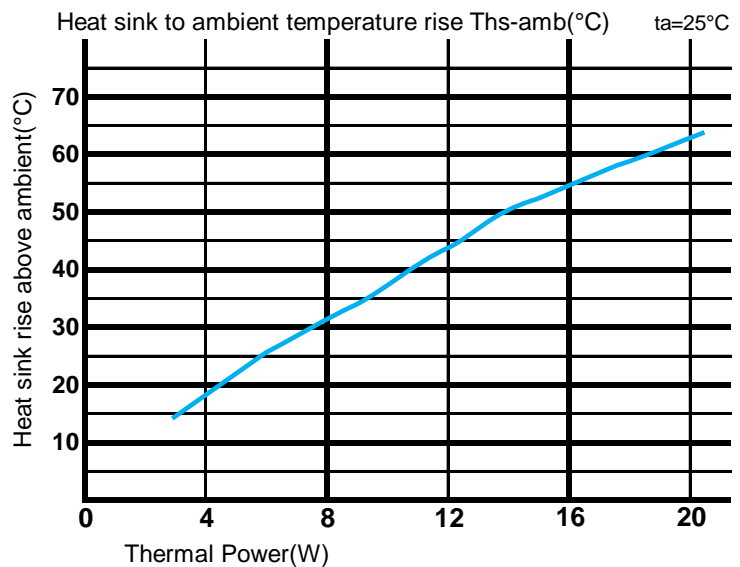
*SimpoleD*

**SimpoleD-5850 Modular Passive LED Cooler  $\Phi$ 58mm**

**The thermal data table**

	 <i>SimpoleD-5850</i>
<b>Model No.</b>	<b>SimpoleD-5850</b>
<b>Size</b>	<b><math>\Phi</math>58xH50mm</b>
<b>Material</b>	<b>AL6063-T5</b>
<b>Finish</b>	<b>Black Anodized</b>
<b>Weight(g)</b>	<b>174</b>
<b>Thermal Wattage</b>	<b>12.2W</b>
<b>Heatsink<math>\Theta</math>s-a<sup>2</sup></b>	<b>65040</b>
<b>Heat Sink T Rise Above Ambient (<math>^{\circ}</math>C/W)</b>	<b>3.7</b>

Dissipated Power Pd(W)	Pd = Pe x (1- $\eta$ L)	Heat sink to ambient thermal resistance Rhs-amb ( $^{\circ}$ C/W)	Heat sink to ambient temperature rise Ths-amb ( $^{\circ}$ C)
		SimpoleD-5850	SimpoleD-5850
3		4.8	14.5
6		4.2	25.0
9		3.8	34.5
12		3.7	43.0
15		3.4	51.0
18		3.2	58.0



**Notes:**

- Mentioned models are an extraction of full product range.
- For specific mechanical adaptations please contact MingfaTech.
- MingfaTech reserves the right to change products or specifications without prior notice.