



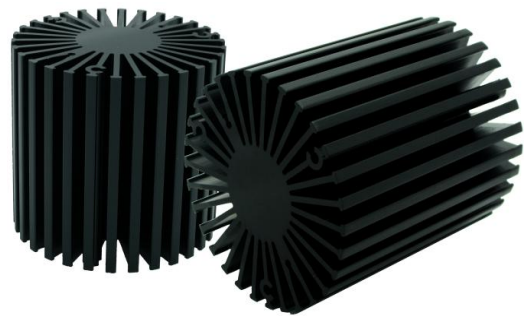
Mingfa TECH for LED

SimpoleD

SimpoleD-5870 Modular Passive LED Cooler Φ 58mm

Features VS Benefits

- * Mechanical compatibility with direct mounting of the LED modules to the LED cooler and thermal performance matching the lumen packages.
 - * Thermal resistance range Rth 2.9°C/W.
 - * Modular design with mounting holes foreseen for direct mounting of a wide range of LED modules and COB's:
 - * Diameter 58mm - Standard height 70mm , Other heights on
 - * Extruded from highly conductive aluminum.
 - * 2 standard colors - clear anodized - black anodized
- Zhaga Book 3 Spot Light Modules: Bridgelux , Citizen, Cree, Tridonic, Lumileds
Lumileds, Osram, Lustrous, LG Innotek, Seoul, SHARP, SamSung



- 1) Bridelux ESS, V8 and V6, V-series
- 2) Citizen CLL022-CLU024, CLL032-CLU034;
- 3) Cree XLamp CXA13xx, CXA15xx;
- 4) Lumileds Luxeon COB's 1203, 1204, Luxeon K arrays
- 5) Osram Soleriq S13, S19;
- 6) Seoul Semiconductor ZC6, ZC12, ZC18;
- 7) Tridonic TALEX module SLE Modules;
- 8) LG Innotek LEMWM18 10W, 13W, 17W;
- 9) Edison EdiPower EdiLex SLM and EdiLex II COB LED engines;
- 10) Lustrous LUSTRON 6 series LL604F, LL608D, LL613F, LL620F;
- 11) Prolight Opto PABS, PABA, PACB, PANA;
- 12) SHARP Mini Zenigata and Mega Zenigata LED
- 13) Vossloh-Schwabe LUGA Shop LED engines.
- 14) SamSung LC013 B LED engines.



Order Information

Example: SimpoleD-5870-B-#

Example: SimpoleD-58 **1** - **2** - **3**

- 1** Height (mm)
- 2** Anodising Color
 - B-Black
 - C-Clear
 - Z-Custom
- 3** Mounting Options - see graphics for details Combinations available
 - Ex.order code - 12
 - means option 1 and 2 combined

MingFa recommends the use of a high Thermal conductive interface between the LED Module and the LED cooler. Either thermal grease, A thermal pad or a phase change thermal pad A thermal pad or a phase change thermal pad. Thickness 0.1-0.15mm is recommended.

Tel: +86-769-33252828 +86-769-33251919
 E-fax: +86-(020)28819702 ext:22122
 Email: sales@mingfatech.com
 Http://www.heatsinkled.com
 Http://www.mingfatech.com





for


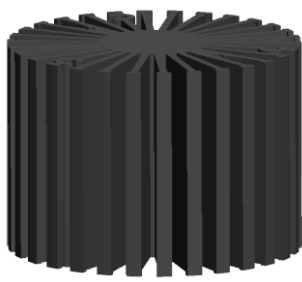
LED



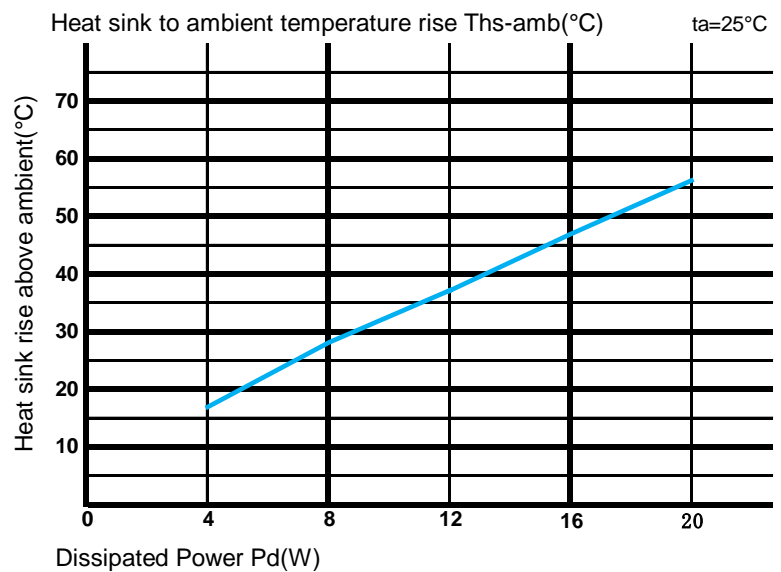
SimpoleD

SimpoleD-5870 Modular Passive LED Cooler Φ 58mm

The thermal data table

	
	<i>SimpoleD-5870</i>
Model No	SimpoleD-5870
Size	Φ58xH70mm
Material	AL6063-T5
Finish	Black Anodized
Weight(g)	244
Thermal Wattage	15.5W
HeatsinkOs-a²	90020
Heat Sink T Rise Above Ambient ($^{\circ}$C/W)	2.9

Dissipated Power Pd(W)	Pd = Pe x (1- η L)	Heat sink to ambient thermal resistance Rhs-amb ($^{\circ}$ C/W)	Heat sink to ambient temperature rise Ths-amb ($^{\circ}$ C)
		SimpoleD-5870	SimpoleD-5870
4		4.00	16.0
8		3.50	28.0
12		3.12	37.5
16		2.90	46.5
20		2.76	55.3



Notes:

- Mentioned models are an extraction of full product range.
- For specific mechanical adaptations please contact MingfaTech.
- MingfaTech reserves the right to change products or specifications without prior notice.

Tel:+86-769-33252828 +86-769-33251919

E-fax:+86-(020)28819702 ext:22122

Email:sales@mingfatech.com

Http://www.heatsinkled.com

Http://www.mingfatech.com

