

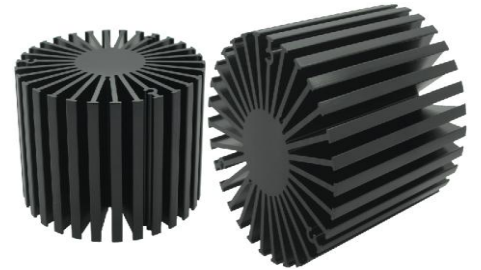


SimpoleD

SimpoleD-8150 Modular Passive LED Cooler Φ 81mm

Features VS Benefits

- * Mechanical compatibility with direct mounting of the LED modules to the LED cooler and thermal performance matching the lumen packages.
 - * Thermal resistance range Rth 1.9°C/W.
 - * Modular design with mounting holes foreseen for direct mounting of a wide range of LED modules and COB's.
 - * Diameter 81mm - Standard height 50mm , Other heights on request.
 - * Extruded from highly conductive aluminum.
 - * 2 standard colors - clear anodized - black anodized
- Zhaga Book 3 Spot Light Modules: Bridgelux , Citizen , Cree , Tridonic, Lumileds
Lumileds, Osram, Lustrous, LG Innotek, Seoul, SHARP, SamSung



- 1) Bridelux ESS, V8 and V6, V-series;
- 2) Citizen CLL022-CLU024, CLL032-CLU034;
- 3) Cree XLamp CXA13xx, CXA15xx, CXA25xx;
- 4) Lumileds Luxeon COB's 1203, 1204, 1205, Luxeon K arrays K12, K16;
- 5) Osram Soleriq S13, S19, E30;
- 6) Seoul Semiconductor ZC12, ZC18ZC25;
- 4) Tridonic Talexx Stark SLE GEN3 Mini LES-10/LES-17, Gen4-15
- 8) LG Innotek LEMWM18 10W, 13W, 17W
- 9) Edison EdiPower II Star/HM/CAC series;
- 10) Lustrous LUSTRON 6 series LL604F, LL608D, LL613F, LL620F
- 11) Prolight Opto PABS, PABA, PACB, PANA
- 12) SHARP Mini Zenigata , Tiger Zenigata and Mega Zenigata LED engines.
- 13) SamSung LC019, LC026 B LED engines.
- 14) Luminus C##-9, c##14 LED engines.
- 15) Vossloh-Schwabe LUGA Shop LED engines.



Order Information

Example: SimpoLED-8150-B-#

Example: SimpoLED-81 **1** - **2** - **3**

- 1** Height (mm)
- 2** Anodising Color
 - B-Black
 - C-Clear
 - Z-Custom
- 3** Mounting Options - see graphics for details Combinations available
 - Ex.order code - 12
 - means option 1 and 2 combined

MingFa recommends the use of a high Thermal conductive interface between the LED Module and the LED cooler. Either thermal grease, A thermal pad or a phase change thermal pad A thermal pad or a phase change thermal pad. Thickness 0.1-0.15mm is recommended.

Tel: +86-769-33252828 +86-769-33251919
 E-fax: +86-(020)28819702 ext:22122
 Email: sales@mingfatech.com
 Http://www.heatsinkled.com
 Http://www.mingfatech.com



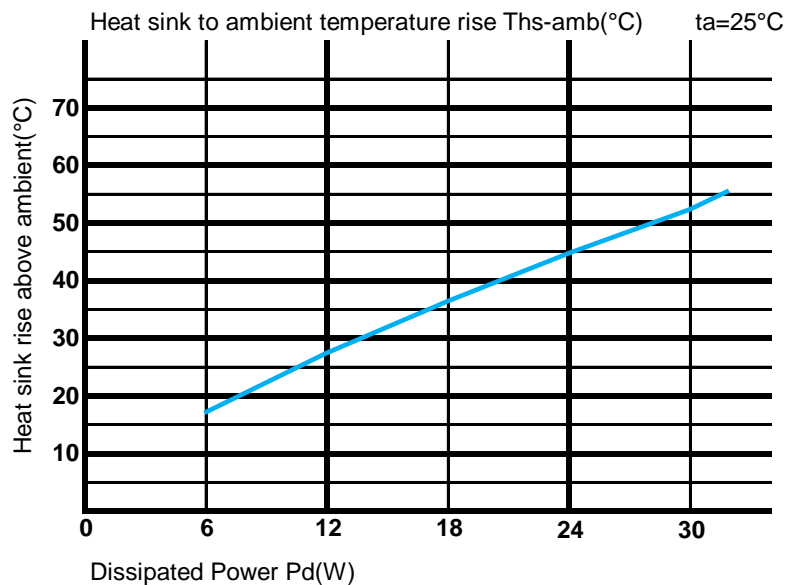
SimpoleD

SimpoleD-8150 Modular Passive LED Cooler Φ 81mm

The thermal data table

	<p><i>SimpoleD-8150</i></p>
Model No.	SimpoleD-8150
Size	Φ81xH50mm
Material	AL6063-T5
Finish	Black Anodized
Weight(g)	318
Thermal Wattage	26.5W
HeatsinkOs-a²	94517
Heat Sink T Rise Above Ambient (°C/W)	1.9

Dissipated Power Pd(W)	Pd = Pe x (1-ηL)	Heat sink to ambient thermal resistance Rhs-amb (°C/W)	Heat sink to ambient temperature rise Ths-amb (°C)
		SimpoleD-8150	SimpoleD-8150
6		2.60	15.6
12		2.18	26.2
18		2.00	36.0
24		1.95	46.8
30		1.72	51.6



Notes:

- Mentioned models are an extraction of full product range.
- For specific mechanical adaptations please contact MingfaTech.
- MingfaTech reserves the right to change products or specifications without prior notice.