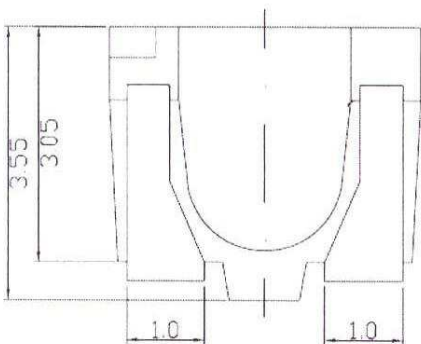
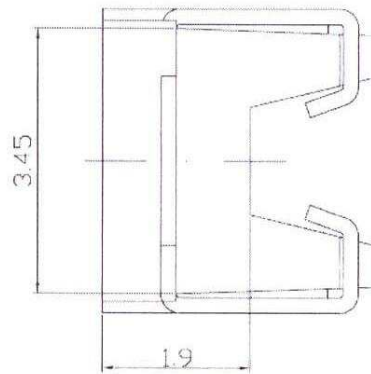
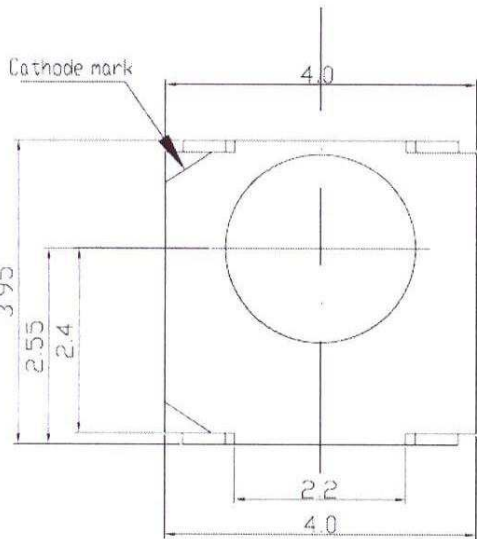
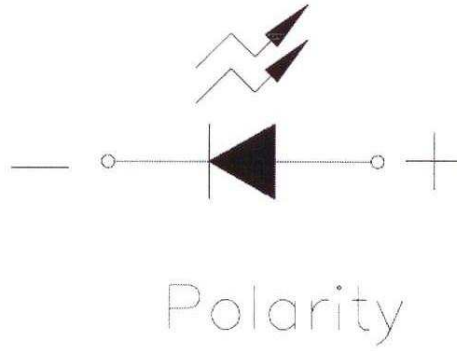
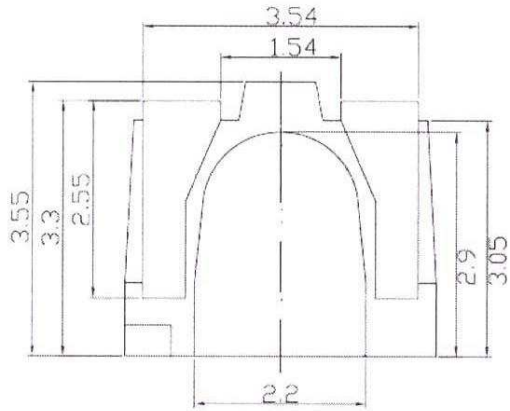


Part No. : SLM-160SUR40-EV-A7

Package Dimensions



- Notes: 1. All dimensions are in millimeters (inches).
2. Tolerance is $\pm 0.10\text{mm}$ (.004") unless otherwise noted.
3. Protruded resin under flange is 1.0mm (.04") max.
4. Lead spacing is measured where the leads emerge from the package.
5. Specifications are subject to change without notice.

Electrical / Optical Characteristics at TA=25°C

Parameter	Symbol	Min.	Typ.	Max.	Unit	Test Condition
Luminous Intensity	I_V	125	215		mcd	IF = 20mA
Viewing Angle	$2\theta_{1/2}$		120		deg	IF = 20mA
Peak Wavelength	λ_p		632		nm	IF = 20mA
Dominant Wavelength	λ_d		624		nm	IF = 20mA
Spectrum Radiation Bandwidth	$\Delta\lambda$		20		nm	IF = 20mA
Forward Voltage	V_F	1.7	2.0	2.4	V	IF = 20mA
Reverse Current, any Dot	I_R			10	μA	VR = 5V

Absolute Maximum Ratings at TA=25°C

Parameter	Maximum Rating	Unit
Forward Current	25	mA
Power Dissipation	60	mW
Peak Forward Current(Duty 1/10 @1KHz)	60	mA
Reverse Voltage(V_r)	5	V
Operating Temperature Range	-40°C to + 85°C	
Storage Temperature Range	-40°C to + 100°C	
Lead Soldering Temperature	260°C for 10 Seconds	

TYPICAL ELECTRON-OPTICAL CHARACTERISTIC CURVES
25°C Free Air Temperature Unless Otherwise Specified

