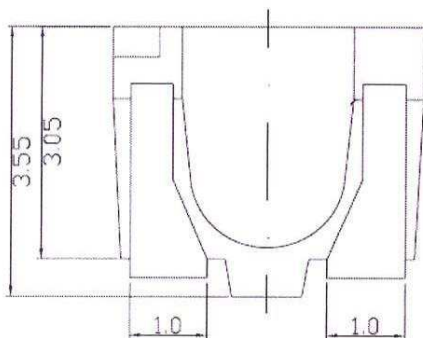
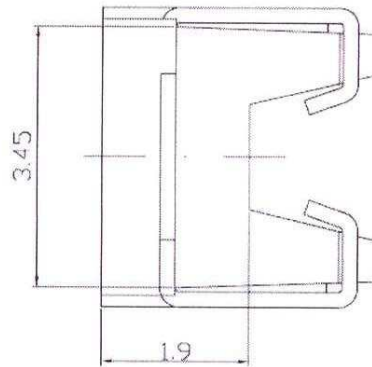
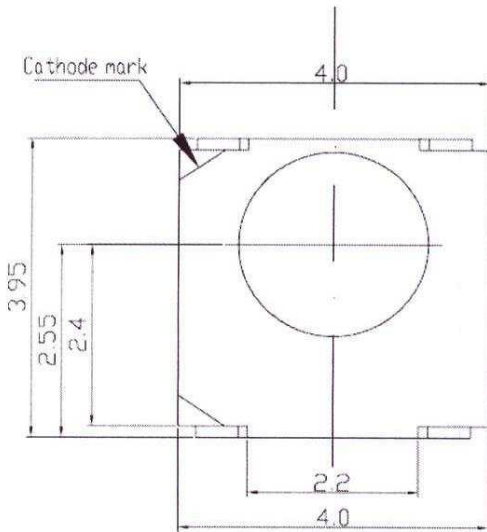
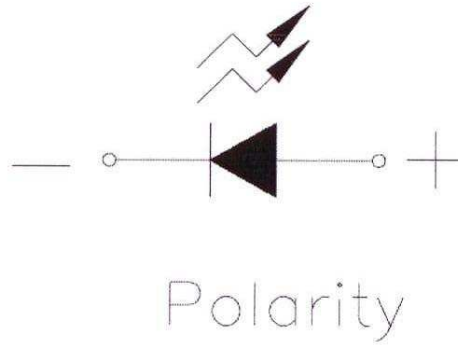
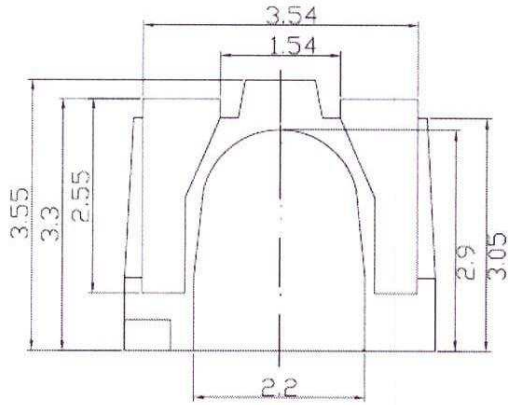


Part No. : SLM-160SCB40-EV

Package Dimensions



- Notes:
1. All dimensions are in millimeters (inches).
 2. Tolerance is $\pm 0.10\text{mm}$ (.004") unless otherwise noted.
 3. Protruded resin under flange is 1.0mm (.04") max.
 4. Lead spacing is measured where the leads emerge from the package.
 5. Specifications are subject to change without notice.

Part No. : SLM-160SCB40-EV

Electrical / Optical Characteristics at TA=25°C

Parameter	Symbol	Min.	Typ.	Max.	Unit	Test Condition
Luminous Intensity	I_V	150		300	mcd	IF = 20mA
Viewing Angle	$2\theta_{1/2}$		120		deg	IF = 20mA
Peak Wavelength	λ_p		470		nm	IF = 20mA
Spectrum Radiation Bandwidth	$\Delta\lambda$		26		nm	IF = 20mA
Forward Voltage	V_F	2.7		3.7	V	IF = 20mA
Reverse Current, any Dot	I_R			10	μA	VR = 12V

Absolute Maximum Ratings at TA=25°C

Parameter	Maximum Rating	Unit
Forward Current	30	mA
Power Dissipation	130	mW
Peak Forward Current(Duty 1/10 @1KHz)	100	mA
Reverse Voltage(V_r)	12	V
Operating Temperature Range	-40°C to + 100°C	
Storage Temperature Range	-40°C to + 110°C	
Lead Soldering Temperature	260°C for 10 Seconds	

TYPICAL ELECTRON-OPTICAL CHARACTERISTIC CURVES
25°C Free Air Temperature Unless Otherwise Specified

