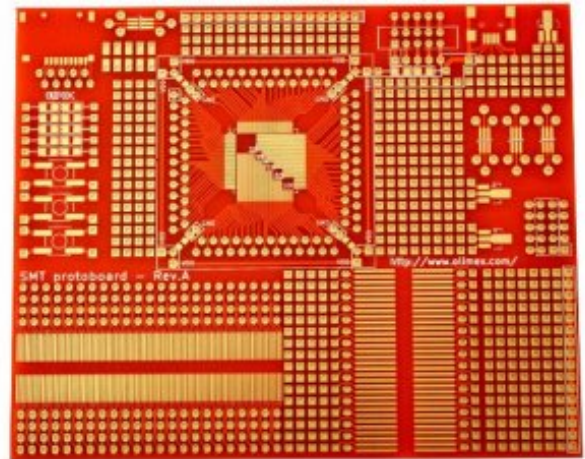
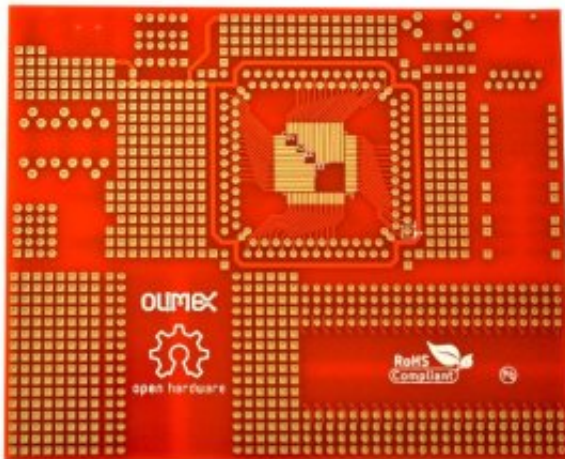




## SMT-PROTOBOARD

PCB PROTO BOARD FOR SMT COMPONENTS AND  
PROTOTYPING



PCB FR4 1.55mm, size: 124.46 x 101.6 mm, gold plating

### FEATURES

SMT footprints:

- LQFP 32, 44, 52, 64 at 0.8 mm step
- TQFP 32, 44, 52, 64, 80, 100 at 0.50 mm step
- x4 SOT23-6
- x3 SOT89
- x3 buttons 6x6 mm
- micro SD card
- mini USB connector
- JTAG connector
- UEXT connector
- x6 LEDs 0805 + R0805
- TSSOP 2\*92 at 25 mils
- TSSOP 2\*32 at 50 mils
- PROTO x3 16x4 0.1" step
- PROTO x2 16x8 0.1" step