

## GooLED

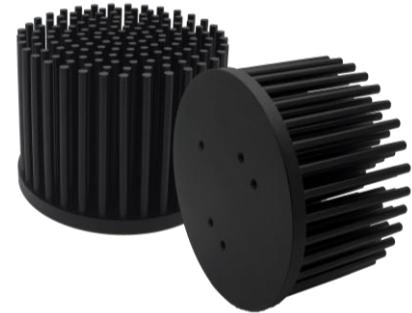
### GooLED-7850 Pin Fin LED Heat Sink $\Phi$ 78mm

#### Features VS Benefits

- \* Mechanical compatibility with direct mounting of the LED modules to the LED cooler and thermal performance matching the lumen packages.
- \* Thermal resistance range  $R_{th}$  2.1°C/W.
- \* Modular design with mounting holes foreseen for direct mounting of a wide range of LED modules and COB's:
- \* Diameter 78mm - Standard height 50mm , Other heights on request.
- \* Forged from highly conductive aluminum.

2 standard colors - clear anodized - black anodized

Zhaga Book 3 Spot Light Modules Edison , Osram , Xicato , Bridelux , Citizen , Cree , Prolight , Philips , Tridonic , Vossloh , LG , Seoul , Lustrous , Luminus , SHARP , Samsung , GE lighting .



- 1) Xicato XSM, XIM,XTM; (XSA-316,H30mm;XSA-317 H50mm)
- 2) Bridelux ES Star,Array V6,V8,V10 and Vero 10 Array LED engines;
- 3) Citizen CLL022-CLU024, CLL032-CLU034;
- 4) Cree XLamp CXA13xx, CXA15xx;
- 5) LG Innotek LEMWM18 10W, 13W;
- 6) Seoul Semiconductor ZC4, ZC6;
- 7) Tridonic TALEXXmodule SLE modules;
- 8) Edison EdiLex SLM and EdiLex II COB LED engines;
- 9) Lustrous LUSTRON 6 series LL604F, LL608D, LL613F, LL620F;
- 10) Prolight Opto PABS, PABA, PACB, PANA;
- 11) Luminus CLM-9;CXM-9;CHM-9 COB LED engines;
- 12) Osram SOsram SOLERIQ P6,SOLERIQ S13 and PrevaLED Core LED engines;
- 13) SHARP Mini Zenigata LED engines;
- 14) Vossloh-Schwabe LUGA Shop and LUGA C LED engines;
- 15) Samsung LC013 LED engines;
- 16) Philips Fortimo SLM Modules;
- 17) GE lighting Infusion™ LED engines;



#### Order Information

Example:GooLED-7850-B-#

Example:GooLED-7850 **1** - **2**

- 1** Anodising Color  
 B-Black  
 C-Clear  
 Z-Custom



- 2** Mounting Options - see graphics for details  
 Combinations available  
 Ex.order code - 12  
 means option 1 and 2 combined

MingFa recommends the use of a high Thermal conductive interface between the LED Module and the LED cooler. Either thermal grease, A thermal pad or a phase change thermal pad Thickness 0.1-0.15mm is recommended.

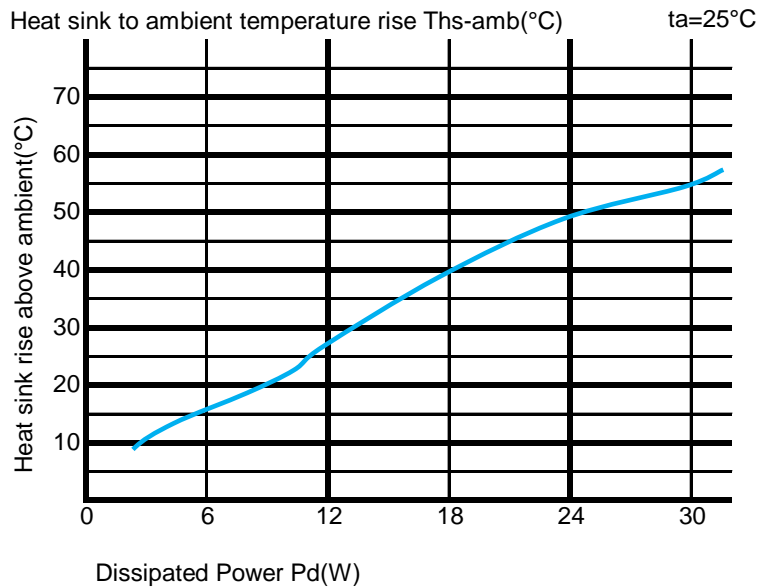
*GooLED*

**GooLED-7850 Pin Fin LED Heat Sink  $\Phi$ 78mm**

**The thermal data table**

|   |  |
|---|--|
|  |  |
|   | <i>GooLED-7850</i>   |
| <b>Model No.</b>  | <b>GooLED-7850</b>   |
| <b>Size</b>   | <b><math>\Phi</math>78xH50mm</b>   |
| <b>Material</b>   | <b>AL1070</b>  |
| <b>Finish</b>   | <b>Black Anodized</b>  |
| <b>Weight(g)</b>  | <b>197</b>   |
| <b>Thermal Wattage</b>  | <b>24W</b>   |
| <b>Heatsink<math>\Theta</math>s-a<sup>2</sup></b>                                 | <b>75332</b>   |
| <b>Heat Sink RiseT</b> <small>Rise Above Ambient (°C/W)</small>                   | <b>2.1</b>   |

| Dissipated Power Pd(W) | Pd = Pe x (1-ηL) | Heat sink to ambient thermal resistance Rhs-amb (°C/W) | Heat sink to ambient temperature rise Ths-amb (°C) |
|------------------------|------------------|--|--|
|                        |                  | GooLED-7850  | GooLED-7850  |
| 2.5                    |                  | 3.2  | 8  |
| 4.5                    |                  | 2.9  | 13   |
| 7                      |                  | 2.6  | 18.5   |
| 9.5                    |                  | 2.4  | 23   |
| 12                     |                  | 2.3  | 27.5   |
| 18                     |                  | 2.2  | 39   |
| 24                     |                  | 2.1  | 49   |
| 30                     |                  | 1.8  | 54   |



**Notes:**

- Mentioned models are an extraction of full product range.
- For specific mechanical adaptations please contact MingfaTech.
- MingfaTech reserves the right to change products or specifications without prior notice.