

EVB-USB2514B-FS

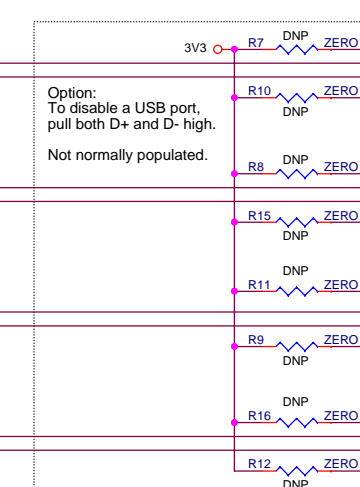
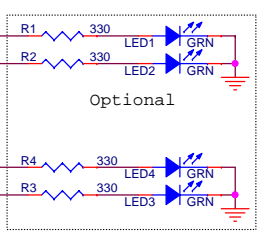
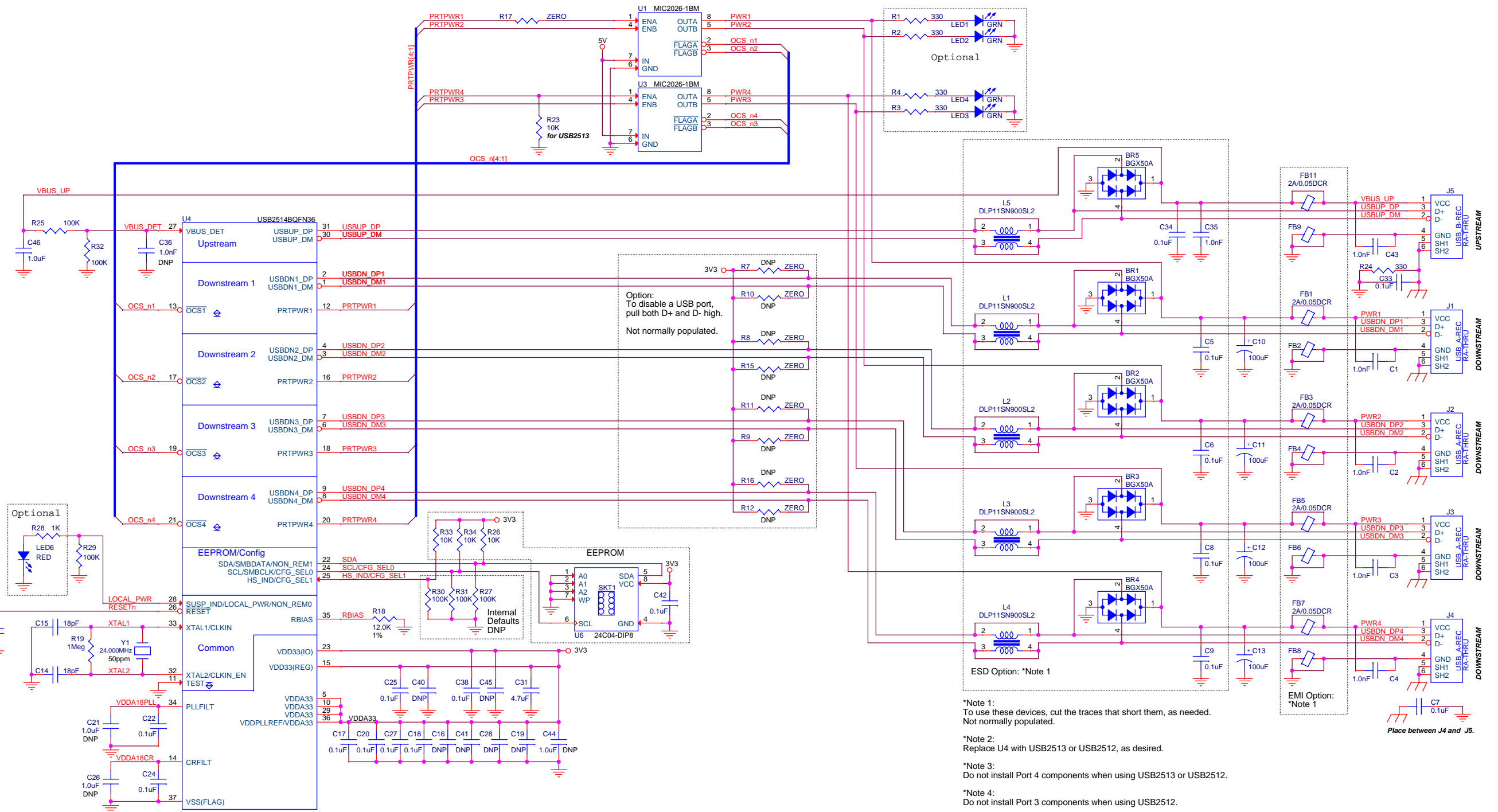
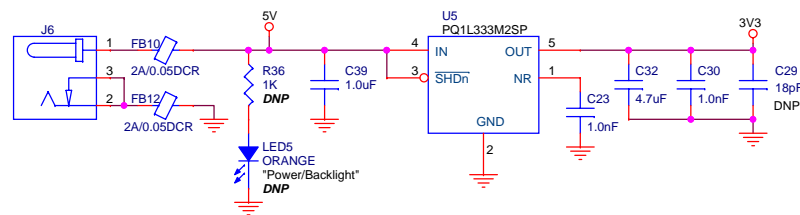
Customer Evaluation Design for USB2514,
QFN36 package

Self-powered, 4-port Full-Speed USB 2.0 HUB,
Low-cost, basic feature set

(*Also Supports USB2513 and USB2512 in
3-port and 2-port implementations.)

Revision History

Revision	Date	Revision Summary	Author
A	20121125	Based on full schematics EVB-USB2514QFN36_C. Uses PCB EVB-USB2514BCQFN36_A. Setup for Full-Speed only so requires EEPROM.	J. Hancock
A1	20130731	DNP'd 1.0uF FILT caps and populated 0.1uF FILT caps. Also replaced DUT with USB2514B part.	J. Hancock



*Note 1:
To use these devices, cut the traces that short them, as needed.
Not normally populated.

*Note 2:
Replace U4 with USB2513 or USB2512, as desired.

*Note 3:
Do not install Port 4 components when using USB2513 or USB2512.

*Note 4:
Do not install Port 3 components when using USB2512.

Place between J4 and J5.