

### SURFACE MOUNT RECTIFIERS

VOLTAGE RANGE: 50 --- 1000 V  
CURRENT: 3.0 A

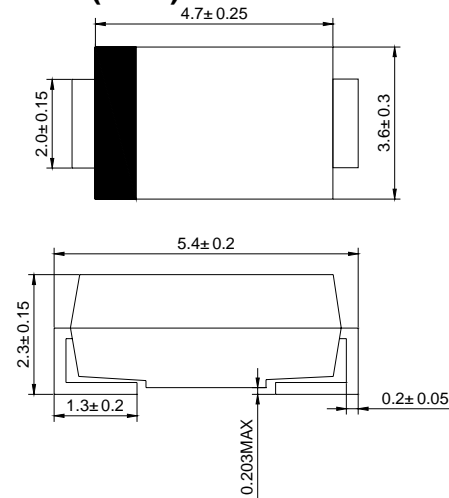
#### FEATURES

- ◇ Low cost
- ◇ Low leakage
- ◇ Low forward voltage drop
- ◇ High current capability
- ◇ Easily cleaned with Alcohol, Isopropanol and similar solvents
- ◇ The plastic material carries U/L recognition 94V-0

#### MECHANICAL DATA

- ◇ Case: JEDEC DO-214AA, molded plastic
- ◇ Terminals: Solderable per MIL- STD-202, Method 208
- ◇ Polarity: Color band denotes cathode
- ◇ Weight: 0.003 ounces, 0.093 grams
- ◇ Mounting position: Any

#### DO-214AA(SMB)



#### MAXIMUM RATINGS AND ELECTRICAL CHARACTERISTICS

Ratings at 25°C ambient temperature unless otherwise specified.

Single phase, half wave, 60 Hz, resistive or inductive load. For capacitive load, derate by 20%.

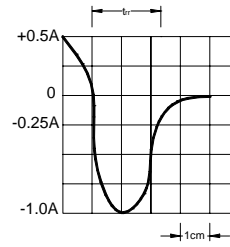
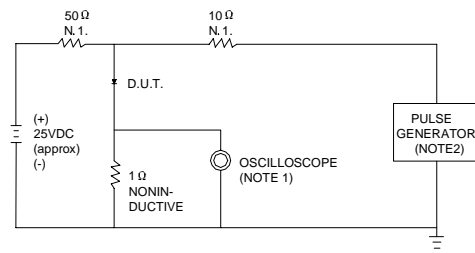
		UF3AB	UF3BB	UF3DB	UF3GB	UF3JB	UF3KB	UF3MB	UNITS
Device marking code		UA	UB	UD	UG	UJ	UK	UM	
Maximum recurrent peak reverse voltage	$V_{RRM}$	50	100	200	400	600	800	1000	V
Maximum RMS voltage	$V_{RMS}$	35	70	140	280	420	560	700	V
Maximum DC blocking voltage	$V_{DC}$	50	100	200	400	600	800	1000	V
Maximum average forward rectified current @ $T_L=90^\circ\text{C}$	$I_{F(AV)}$	3.0							A
Peak forward surge current 8.3ms single half-sine-wave superimposed on rated load @ $T_J=125^\circ\text{C}$	$I_{FSM}$	100							A
Maximum instantaneous forward voltage at 3.0 A	$V_F$	1.0		1.4		1.7			V
Maximum reverse current @ $T_A=25^\circ\text{C}$ at rated DC blocking voltage @ $T_A=100^\circ\text{C}$	$I_R$	10 500							$\mu\text{A}$
Typical reverse recovery time (Note1)	$t_{rr}$	50				75			ns
Typical junction capacitance (Note2)	$C_J$	15				12			pF
Typical thermal resistance (Note3)	$R_{\theta JA}$	15							$^\circ\text{C/W}$
Operating junction temperature range	$T_J$	- 55 ---- + 150							$^\circ\text{C}$
Storage temperature range	$T_{STG}$	- 55 ---- + 150							$^\circ\text{C}$

NOTE: 1. Measured with  $I_F=0.5\text{A}$ ,  $I_R=1\text{A}$ ,  $I_{rr}=0.25\text{A}$ .

2. Measured at 1.0MHz and applied reverse voltage of 4.0V DC.

www.galaxycn.com

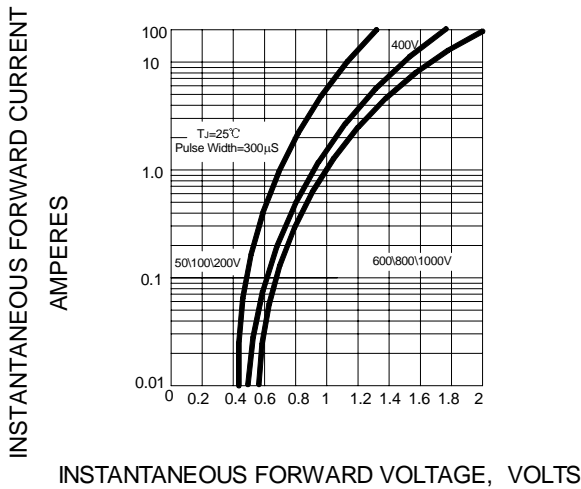
**FIG.1 – TEST CIRCUIT DIAGRAM AND REVERSE RECOVERY TIME CHARACTERISTIC**



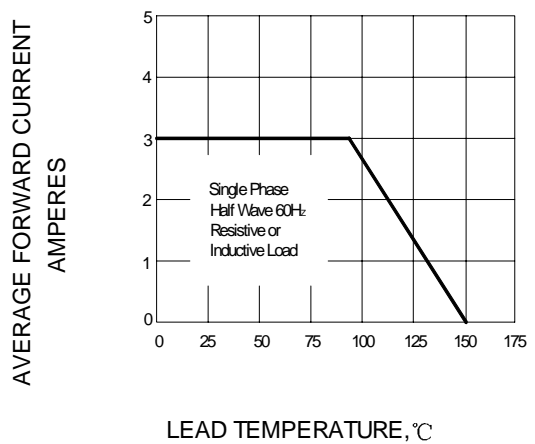
NOTES:1.RISE TIME = 7ns MAX.INPUT IMPEDANCE = 1MΩ.22pF.  
2.RISE TIME =10ns MAX.SOURCE IMPEDANCE=50 Ω.

SET TIME BASE FOR 20/30 ns/cm

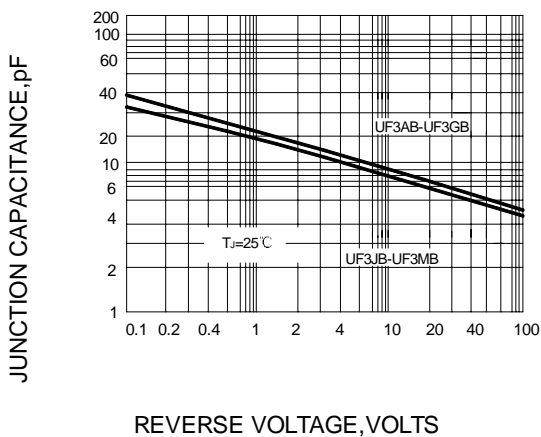
**FIG.2 – TYPICAL FORWARD CHARACTERISTIC**



**FIG.3 – FORWARD DERATING CURVE**



**FIG.4 – TYPICAL JUNCTION CAPACITANCE**



**FIG.5 – PEAK FORWARD SURGE CURRENT**

