

Elegant

Enclosure with membrane keypad area



EG 1530 F

Order no.: 32153062

* = Available on request.

Characteristics

Colour of enclosure group

light grey/agate grey

Protection class

IP 40

Enclosure Material

PS (polystyrene); for details see Technical Information

Scope of delivery

Lid, base, screws

Note

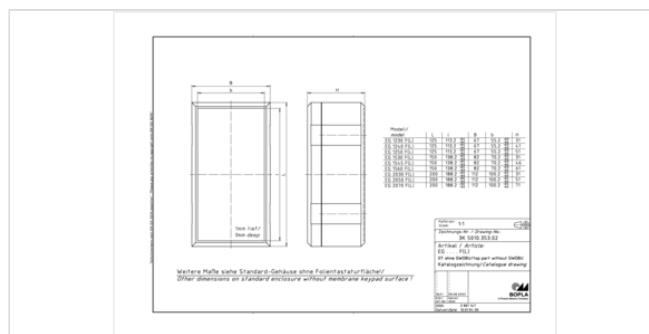
Higher protection class on request.

Dimensions

Dimensions

150 x 82 x 31 mm

Product drawing



Technical documentation / Downloads

Technical drawings

3D product data in STEP format: 32153062 EG-1530-F.stp (1.1 MB)

Drawing for mechanical processing: 32153062 EG-1530-F-G.dxf (527.8 KB)

Milling contours are shown here as a DXF file. (Sub D, USB, HDMI, cable glands, ...)

Product drawing in PDF format: 32153062 2-EG-1530-F.pdf (49.2 KB)

Product drawing in DXF format: 32153062 2-EG-1530-F.dxf (269.0 KB)

Product information

elegant en.pdf (580.7 KB)

Important!

To compensate for pressure when temperatures change and cause moisture in the enclosure, we recommend that you use a pressure compensation element.

» Additional information

Matching accessories



Rubber feet

22009000 GF

Polyurethane, 65-75 Shore

Black



Universal clip and tip-up clip

34090000 ASC 1

Black, similar to RAL 9005



Wall brackets, ABS

33000200 EG-WL



Quick-release fastener for EG 12.. - 20.., polyamide

33000400 EG-SV



Press-in tool for EG-SV

33000405* EG-WZ



Covers for keyhole suspension

33000100 EG-AK

Agate grey



Screw cover, ABS

33000300 EG-SA

Agate grey



Mounting panel, laminated paper

33015000* EG-M 15

For EG 15..



Universal DIN rail holder TSH 35, polyamide

22035000 TSH 35

Black, similar to RAL 9005



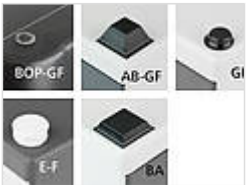
Metal top hat rail adapter for DIN rail DIN EN 60715 TH 35

34035050 TSH 35 AL - 50

Width 50 mm, natural colour anodised

34035100 TSH 35 AL - 100

Width 100 mm, natural colour anodised



Universal rubber feet for stability of the enclosures on all surfaces

35800300 BOP-GF

Polyurethane, 65-75 Shore

Transparent



Screws (SHR) and distance bolts (DIBLZ) for mounting bosses in plastic enclosures

59006219 SHR Z KA30x6

SD = 3.0 / ND = 2.4-2.6 / KD = 5.3