

Earth socket LB4-R...

Uninsulated, Ø 4 mm, rigid. Machined brass. The sockets can be screw-mounted in pre-

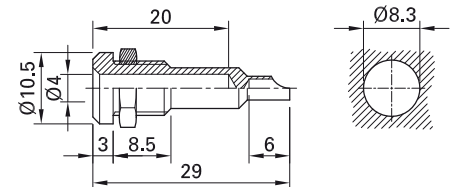
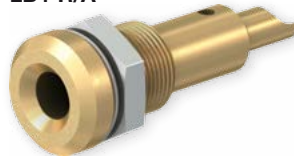
drilled panels.

Solder connection.

LB4-R



LB4-R/A



Order No.	Type	Rated voltage/current		
23.0090	LB4-R	30 VAC / 40 A 60 VDC / 40 A	Ni	
23.0470	LB4-R/A	30 VAC / 40 A 60 VDC / 40 A	Au	

Component parts

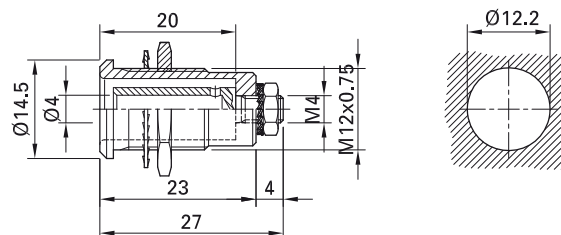
23.5044	B-LB4-R	Socket without nut for LB4-R
23.5339	B-LB4-R/A	Socket without nut for LB4-R/A
Page 68	MU/M8x0,5	Hexagonal Nuts
Page 69	SP4	Washer

Earth Socket MSLB4-G

Uninsulated, Ø 4 mm, rigid, accepting spring-loaded Ø 4 mm plugs with rigid insu-

lating sleeve. Machined brass. The socket can directly be mounted in predrilled metal panels.

Connection: Threaded bolt M4.



Order No.	Type	Rated voltage/current		
23.3090	MSLB4-G	30 VAC / 32 A 60 VDC / 32 A	Ni	

Supplied assembly material

Page 68	MU/M12x0,75	Hexagonal Nuts
Page 68	MU0,5D/M4N	Hexagonal Nuts
Page 68	MU/M8x0,5	Hexagonal Nuts
Page 69	SP4	Washer
Page 70	FS/M12	Spring Washers
Page 70	FS/M4	Spring Washers