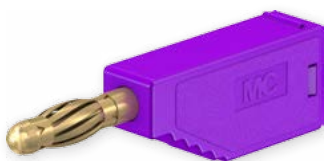


Plug SLS4...

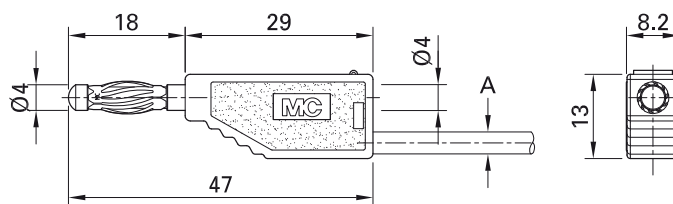
Stackable, Ø 4 mm, with spring-loaded MULTILAM for self-assembly of test leads.

Solder connection.

SLS410
SLS425-A



SLS410N
SLS425-A/N



Order No.	Type	Rated voltage/current	Cable (A)		*Colors
22.2626-*	SLS410	30 VAC / 19 A 60 VDC / 19 A	PVC TPE Ø 2.7 mm SIL Ø 3.0 mm	1.0 mm ²	Au 20 21 22 23 24 25 26 27 28 29
22.2627-*	SLS410N	30 VAC / 19 A 60 VDC / 19 A	PVC TPE Ø 2.7 mm SIL Ø 3.0 mm	1.0 mm ²	Ni 20 21 22 23 24 25 26 27 28 29
22.2631-*	SLS425-A	30 VAC / 32 A 60 VDC / 32 A	PVC TPE Ø 3.6 mm SIL Ø 3.9 mm	2.5 mm ²	Au 20 21 22 23 24 25 26 27 28 29
22.2632-*	SLS425-A/N	30 VAC / 32 A 60 VDC / 32 A	PVC TPE Ø 3.6 mm SIL Ø 3.9 mm	2.5 mm ²	Ni 20 21 22 23 24 25 26 27 28 29

Component parts

22.2140-*	KT410	Insulator for SLS410, SLS410N
22.2160-*	KT425-A	Insulator for SLS425-A, SLS425-A/N
22.1010	LS410	Plug for SLS410, SLS425-A
22.5067	LS410N	Plug for SLS410N, SLS425-A/N



Assembly instructions MA110

www.staubli.com/electrical