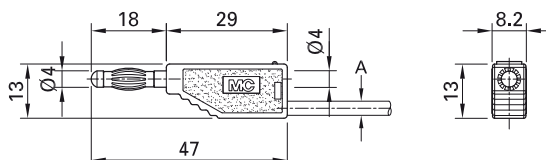
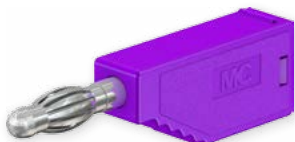


Plug SLS425-A/X

Stackable, Ø 4 mm, with spring-loaded MULTILAM for self-assembly of test leads.

Solder connection.



Order No.	Type	Rated voltage/current	Cable (A)		*Colors																	
22.2634-*	SLS425-A/X	30 VAC / 32 A 60 VDC / 32 A	<table border="1"> <tr> <td>PVC</td> <td>TPE</td> <td>Ø 3.6 mm</td> <td rowspan="2">2.5 mm²</td> </tr> <tr> <td>SIL</td> <td></td> <td>Ø 3.9 mm</td> </tr> </table>	PVC	TPE	Ø 3.6 mm	2.5 mm ²	SIL		Ø 3.9 mm	Ni	<table border="1"> <tr> <td>20</td> <td>21</td> <td>22</td> <td>23</td> <td>24</td> </tr> <tr> <td>25</td> <td>26</td> <td>27</td> <td>28</td> <td>29</td> </tr> </table>	20	21	22	23	24	25	26	27	28	29
PVC	TPE	Ø 3.6 mm	2.5 mm ²																			
SIL		Ø 3.9 mm																				
20	21	22	23	24																		
25	26	27	28	29																		

Component parts

22.2160-*	KT425-A	Insulator
22.1202	LS410-X	Plug



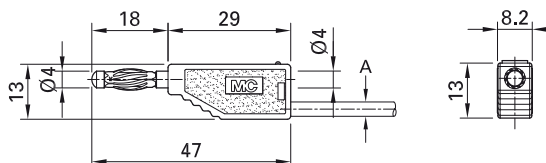
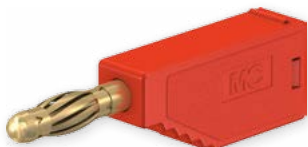
Assembly instructions MA110

www.staubli.com/electrical

Plug SLS425-AM

Stackable, Ø 4 mm, with spring-loaded MULTILAM for self-assembly of test leads.

Screw connection.



Order No.	Type	Rated voltage/current	Cable (A)		*Colors										
22.2633-*	SLS425-AM	30 VAC / 32 A 60 VDC / 32 A	~ Ø 4.0 mm 2.5 mm ²	Au	<table border="1"> <tr> <td>20</td> <td>21</td> <td>22</td> <td>23</td> <td>24</td> </tr> <tr> <td>25</td> <td>26</td> <td>27</td> <td>28</td> <td>29</td> </tr> </table>	20	21	22	23	24	25	26	27	28	29
20	21	22	23	24											
25	26	27	28	29											

Component parts

22.2160-*	KT425-A	Insulator
22.1028	LS425-AM	Plug



Assembly instructions MA110

www.staubli.com/electrical