

Panel-mount Socket XE...-1...

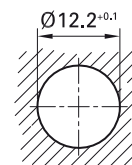
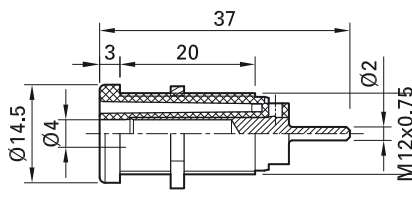
Insulated, rigid, Ø 4 mm, accepting spring-loaded Ø 4 mm plugs with rigid

insulating sleeve. Machined brass. The sockets are screwed into pre-

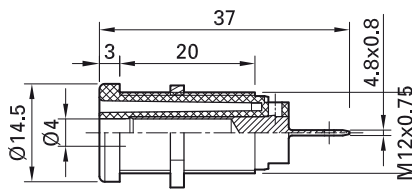
drilled panels of plastic, metal, etc.

Various metal parts/connections.

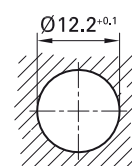
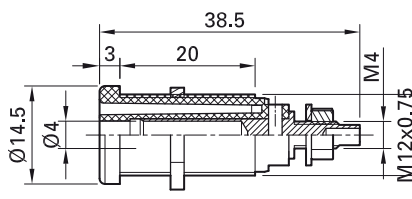
XES-1R



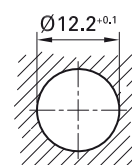
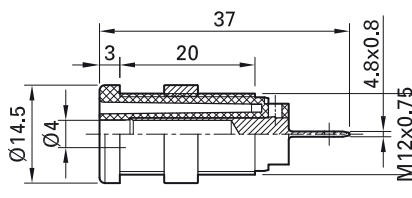
XEF-1R



XEG-1R



XEF-1RR



Order No.	Type	Rated voltage/current	Connection		*Colors ¹⁾
66.9661-*	XES-1R	1000 V, CAT IV / 24 A	Solder pin Ø 2,0 mm	Ni c us	21 22 23
66.9665-*	XEF-1R	1000 V, CAT IV / 24 A	Flat connecting tab 4.8 mm x 0.8 mm	Ni c us	20 21 22 23 24
66.9136-*	XEG-1R	1000 V, CAT IV / 20 A	Threaded bolt M4	Ni c us	20 21 22 23
66.9854-*	XEF-1RR	1000 V, CAT IV / 24 A	Flat connecting tab 4.8 mm x 0.8 mm	Ni c us	21 22 23

Supplied assembly material

Page 103	GEW.12-MUTTER	Hexagon nut for	XES-1R, XEF-1R, XEG-1R
Page 104	MUR/M12x0,75	Round nut for	XEF-1RR



Assembly instructions MAH506, MAH509

www.staubli.com/electrical



Flat connecting receptacles FSH4,8x0,8, page 107

Tube spanners SS2, SS425, page 107

¹⁾ Other colors available on request.