

■Features

- Single chip
- Super high brightness of reverse mount LED
- Compact package outline
(L x W x T) of 3.2mm x 1.6mm x 1.1mm
- Compatible to IR reflow soldering.
- MSL LEVEL 3

■Applications

- Backlighting (switches, keys, etc.)
- Marker lights (e.g. steps, exit ways, etc.)

■Absolute Maximum Rating

(Ta=25°C)

Item	Symbol	Value		Unit
		W5/M5/B5/G5	G8/Y5/O5/R5	
DC Forward Current	I _F	30	30	mA
Pulse Forward Current*	I _{FP}	100	100	mA
Reverse Voltage	V _R	5	5	V
Power Dissipation	P _D	108	78	mW
Operating Temperature	Topr	-40 ~ +85		°C
Storage Temperature	Tstg	-40~ +85		°C
Lead Soldering Temperature	Tsol	260°C/10sec		-

*Pulse width Max 0.1ms, Duty ratio max 1/10

■Electrical -Optical Characteristics

(Ta=25°C)

Part Number	Color		V _F (V)			I _R (μA)	I _v (mcd)			λD (nm)			2θ1/2(deg)
			Min.	Typ.	Max.	Max.	Min.	Typ.	Max.	Min.	Typ.	Max.	Typ.
			I _F =20mA			V _R =5V		I _F =20mA					
OSW51206E1N	White	W5	2.8	3.1	3.6	10	500	700	-	8000-18000K			140
OSM51206E1N	Warm White	M5	2.8	3.1	3.6	10	500	700	-	2700-3300K			140
OSB51206E1N	Blue	B5	2.8	3.1	3.6	10	100	150	-	460	465	475	140
OSG51206E1N	True Green	G5	2.8	3.1	3.6	10	500	700	-	515	525	530	140
OSG81206E1N	Yellow green	G8	1.8	2.1	2.6	10	20	35	-	565	570	575	140
OSY51206E1N	Yellow	Y5	1.8	2.1	2.6	10	80	100	-	585	590	595	140
OSO51206E1N	Orange	O5	1.8	2.1	2.6	10	80	100	-	600	605	610	140
OSR51206E1N	Red	R5	1.8	2.1	2.6	10	80	100	-	615	625	630	140

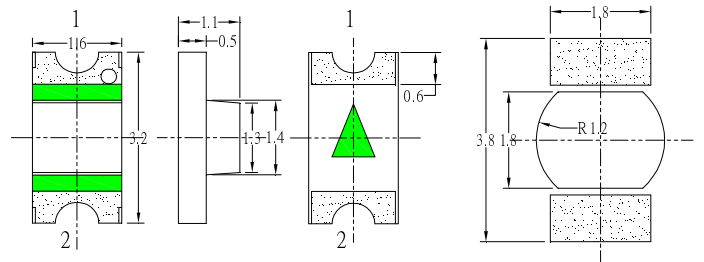
*1 Tolerance of measurements of chromaticity coordinate is ±10%

*2 Tolerance of measurements of dominant wavelength is ±1nm

*3 Tolerance of measurements of luminous intensity is ±15%

*4 Tolerance of measurements of forward voltage is ±0.1V

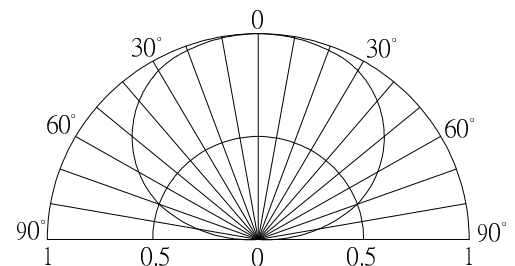
■Outline Dimension



1. Cathode 2. Anode For reflow soldering(Propose)

Unit:mm
Tolerance:±0.20mm
unless otherwise noted

■Directivity



■ **Optical and electrical characteristics**

TYPICAL ELECTRICAL/OPTICAL CHARACTERISTIC CURVES

