

# UNSHIELDED SMD POWER INDUCTORS / FPI TYPE

## FEATURES

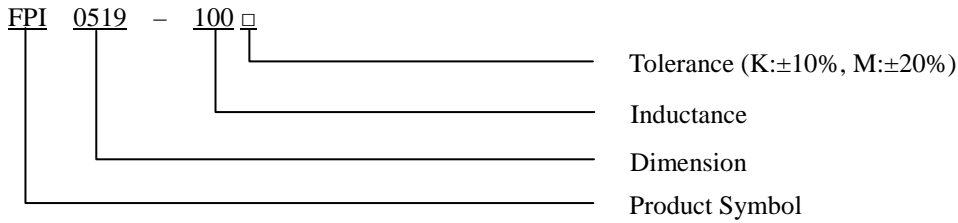
- ◆ Silver Plated Type
- ◆ High power and high saturation
- ◆ Ideal inductors for DC/DC conversion



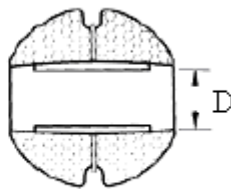
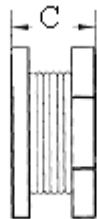
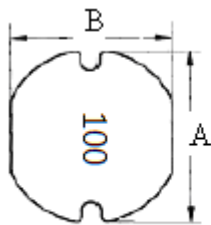
## APPLICATIONS

- ◆ Power supply for VTRs.
- ◆ Portable communication equipment.
- ◆ Notebook PCs.
- ◆ LCD televisions.
- ◆ DC/DC converters, etc.

## ORDERING CODE



## DIMENSIONS (UNIT: mm)



A	$5.8 \pm 0.3$	m/m
B	$5.2 \pm 0.3$	m/m
C	$2.1 \pm 0.3$	m/m
D	1.3 (REF)	m/m

## UNSHIELDED SMD POWER INDUCTORS / FPI TYPE

### ELECTRICAL CHARACTERISTICS FOR FPI0519

Part No.	Inductance (uH)	RDC ( $\Omega$ )	IDC (A)
FPI0519-1R0 □	1.0	0.035	5.70
FPI0519-2R2 □	2.2	0.062	4.20
FPI0519-3R9 □	3.9	0.073	3.30
FPI0519-4R7 □	4.7	0.080	2.50
FPI0519-100 □	10	0.180	1.80
FPI0519-220 □	22	0.450	1.20
FPI0519-470 □	47	0.750	0.80
FPI0519-560 □	56	0.800	0.60
FPI0519-101 □	100	1.500	0.50
FPI0519-181 □	180	2.500	0.40

\* 100uH 以上 Test Frequency : 1KHZ/1V

\* 100uH 以下 Test Frequency : 2.52MHZ/1V