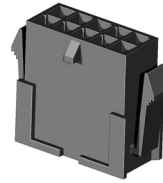


CP35 Series Plug Connectors

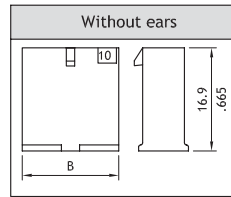
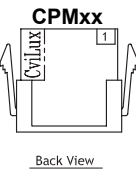
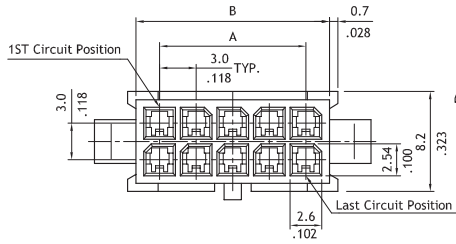
- With mounting ears
- Available in 2 through 24 circuits
- Can be used CP35 Crimp terminal
- Thermal Polyester UL 94V-0, Color Black
- Terminal accommodated AWG #20 ~ #24



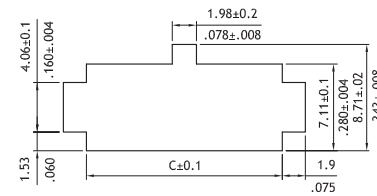
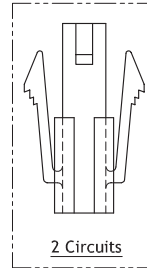
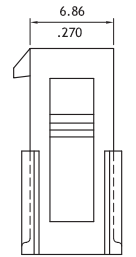
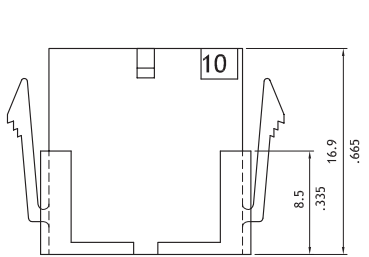
RoHS Compliant

RU RU :E159616

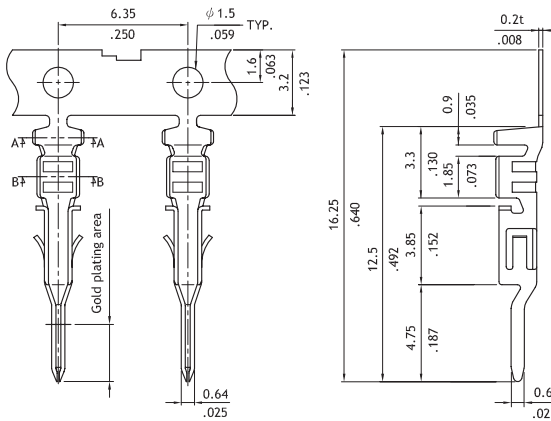
CP



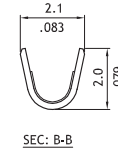
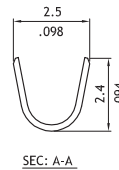
Circuits	Dimension		
	A	B	C
2	—	3.9(.154)	4.09(.161)
4	3.0(.118)	6.9(.272)	7.09(.279)
6	6.0(.236)	9.9(.390)	10.08(.397)
8	9.0(.354)	12.9(.508)	13.08(.515)
10	12.0(.472)	15.9(.626)	16.06(.633)
12	15.0(.591)	18.9(.744)	19.08(.751)
14	18.0(.709)	21.9(.862)	22.07(.869)
16	21.0(.827)	24.9(.980)	25.07(.967)
18	24.0(.945)	27.9(1.098)	26.07(1.105)
20	27.0(1.063)	30.9(1.217)	31.06(1.223)
22	30.0(1.181)	33.9(1.335)	34.06(1.341)
24	33.0(1.299)	36.9(1.453)	37.06(1.459)



Panel Cutout Size



Wire Gauge	Insulation Diameter	Reel Q'ty
AWG #20-#24	2.5 .098 MAX.	12,000 PCS



Ordering Code

1 **2** **3** **4** **5**
CP35 24 P 001 0

- Series No.
- No. of Circuits: 02 to 24
- Contact Type: P= Plug
- Color: 001= Color Black
- Other options:
0= Standard
B= Without ears
*Special options consult manufacturer

1 **2** **3** **4** **5** **6**
CP35 TN2 1 P E P

- Series No.
 - Accept wire range:
TN2 for AWG #20 ~ #24
 - Plating code:
1= Tin over Nickel
A= Selective Gold flash over
B= Selective 15μ" Gold over Nickel
 - Material:
P= Phosphor Bronze
 - Plating method: E= Pre-tinned
 - Style: P= Plug terminal
- C= Selective 30μ" Gold over Nickel
*Optional plating available but MOQ requested