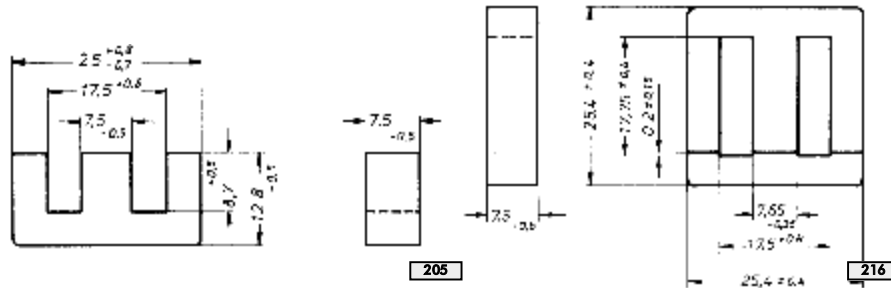




**E-KERN E 25/7; EI 25/7 (EF 25/7,5; EI 25/7,5)**  
**E CORE E 25/7; EI 25/7 (EF 25/7.5; EI 25/7.5)**



**E 25/7**

**EI 25/7**

**Magn. Formkenngrößen/Satz / Effective magn. parameters/set**

Formfaktor Core factor	$C_1$	=	1.11	mm <sup>-1</sup>
Eff. magn. Weglänge Eff. magn. path length	$l_e$	=	58.0	mm
Eff. magn. Querschnitt Eff. magn. cross-section	$A_e$	=	52.0	mm <sup>2</sup>
Min. Kernquerschnitt Min. core cross-section	$A_{min}$	=	51.0	mm <sup>2</sup>
Eff. magn. Volumen Eff. magn. volume	$V_e$	=	2990	mm <sup>3</sup>
Gewicht (EE) Weight (EE)	$G$	=	14.0	g

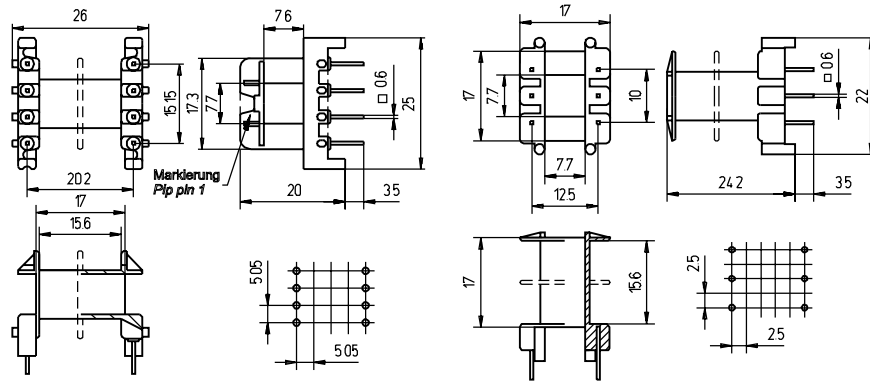
Type	$A_L$ -Wert $A_L$ value nH	Toleranz tolerance %	Werkstoff material	Luftspalt air gap mm	Bestellnummer order number
E 25/7	1800	±25	K2004		320 250 700 024
	1900	±25	K2006		320 250 700 026
	3200	±25	K4000		320 250 700 004
E 25/7	500		K2004	0.10	320 250 710 024
	310		K2004	0.20	320 250 720 024
	170		K2004	0.50	320 250 750 024
EI 25/7	1800	±25	K2004		321 250 700 024
	1900	±25	K2006		321 250 700 026
	3200	±25	K4000		321 250 700 004
EI 25/7	500		K2004	0.10	321 250 710 024
	310		K2004	0.20	321 250 720 024
	170		K2004	0.50	321 250 750 024

**Bei Anwendung in Leistungsübertragern / For application in power transformers**

Meßfrequenz / Test frequency  $f = 16 \text{ kHz}, 25 \text{ kHz}^1$

Temperatur temperature °C	Induktion induction mT	Feldstärke field strength A/m	Verluste W/Satz / losses W/set	
			K2004	K2006 <sup>1)</sup>
25	200		0.36	0.48
100	200		0.30	0.36
100	100	50		
100	330	250		

# SPULENKÖRPER E 25/7 (EF 25/7,5) COIL FORMER E 25/7 (EF 25/7.5)



liegend / horizontal

[mm]

stehend / vertical

[mm]

liegend horizontal	Bezeichnung / Designation	
	SP-E 25 - 1215	SP-E 25 - 1445
Kammeranzahl Number of sections	1	2
$A_N$ in mm <sup>2</sup>	62.4	58.4
$l_N$ in mm	51.5	51.5
max. Stiftanzahl max. number of pins	8	8
Bestell-Nr. Order no.	506 250 710 127	506 250 720 127

stehend vertical	Bezeichnung / Designation	
	SP-E 25 - 1287	SP-E 25 - 1297
Kammeranzahl Number of sections	1	2
$A_N$ in mm <sup>2</sup>	60.1	57.0
$l_N$ in mm	50.9	50.9
max. Stiftanzahl max. number of pins	6	6
Bestell-Nr. Order no.	502 250 710 117	502 250 720 117

Standardmaterial / Standard material: Polyamid(e)