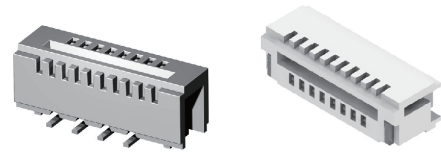


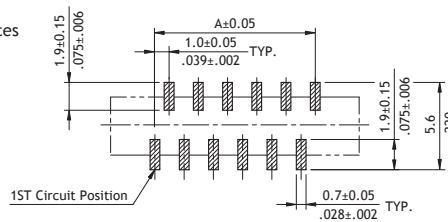
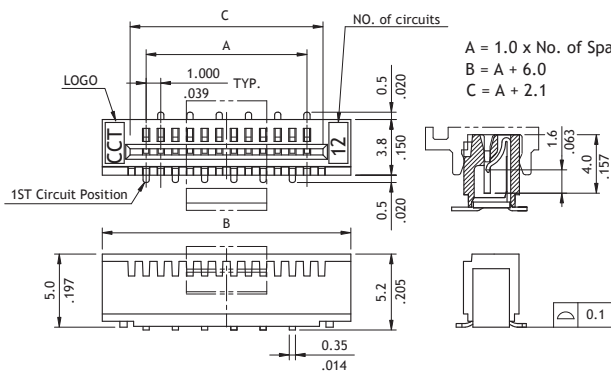
CF16 Series 1.00mm(.039")H=3.80/5.20 SMT LIF FFC/FPC Connectors

- ⊙ Insulator: High temperature plastic UL 94V-0, Color Nature
- ⊙ With metal fixed tabs to secure connector in place

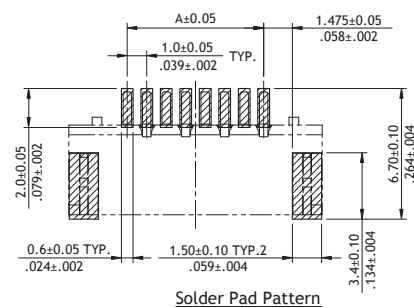
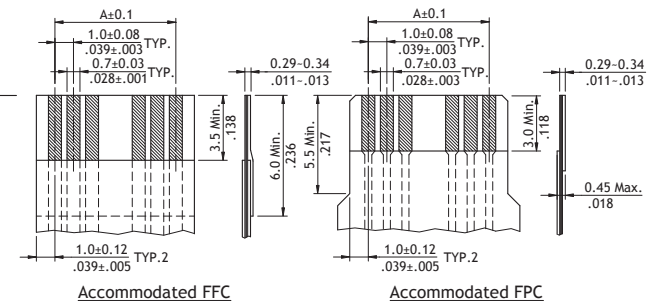
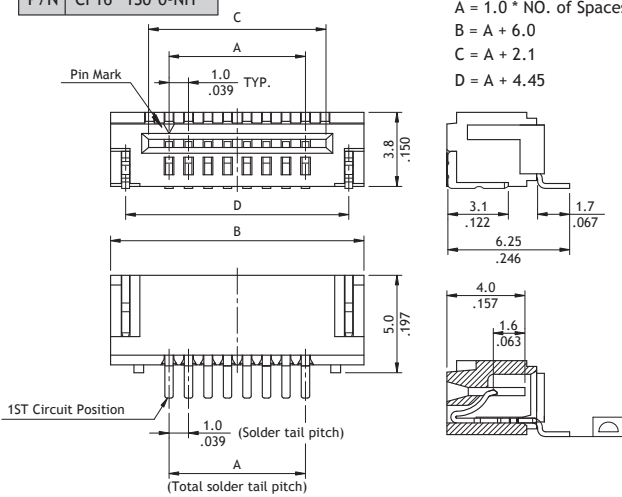


RoHS Compliant

P/N CF16**1M0*0-NH



P/N CF16**1S0*0-NH



Ordering Code

① CF 16 ② 3 2 ③ 1 ④ V ⑤ 0 ⑥ T ⑦ 0 - ⑧ NH

- ① Series No.
- ② No. of Circuits: 03 to 32
- ③ Plating Code:
1 = Matte Tin over Nickel
- ④ Contact Style: U = Upside Contact (DIP)
D = Downside Contact (DIP)
V = Vertical Type (DIP)
M = Top entry Type (SMT)
S = Side entry Type (SMT)
- ⑤ Color: 0 = Nature
- ⑥ Packing: T = Tube packing without Pad (DIP or SMT)
R = Reel packing (SMT)
- ⑦ Other Options: 0 = Standard
*Special options consult manufacturer
- ⑧ Process: -LF = For Lead Free soldering process
-NH = For Lead Free soldering process and Halogen-Free