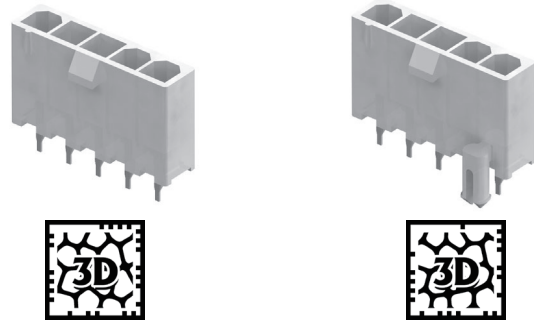


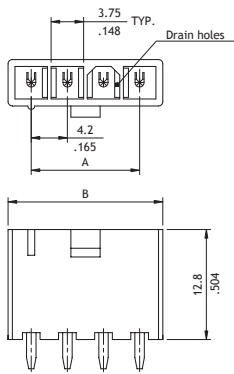
CP-013 Series 4.20mm (.165") Straight DIP Solder Headers

- ⊙ Optional PCB mounting pegs
- ⊙ Mates with CP-011 Connector
- ⊙ Nylon 66 UL 94V-0 or V-2 insulator material

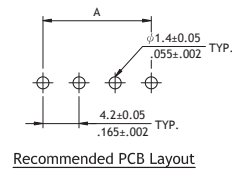
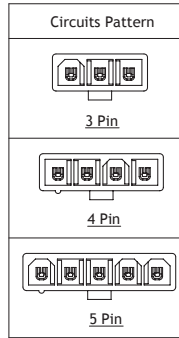
RoHS Compliant



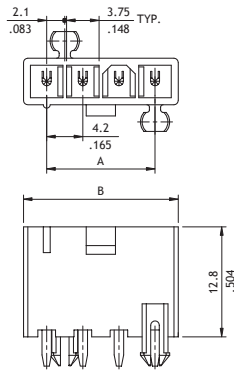
P/N CP-013**11S / CP-013**13S / CP-013**16S / CP-013**17S



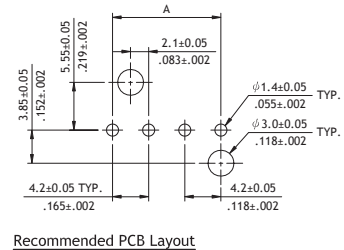
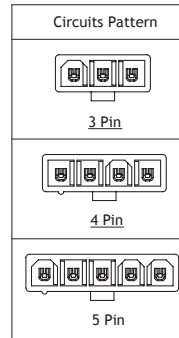
Circuits	Dimension	
	A	B
3	8.4(.331)	13.8(.543)
4	12.6(.496)	18.0(.709)
5	16.8(.661)	22.2(.874)



P/N CP-013**14S / CP-013**15S / CP-013**18S / CP-013**19S



Circuits	Dimension	
	A	B
3	8.4(.331)	13.8(.543)
4	12.6(.496)	18.0(.709)
5	16.8(.661)	22.2(.874)



Ordering Code

① ② ③ ④ ⑤ ⑥
CP - 01 3 05 1 1 S

- ① Series No.
- ② Connector Type:
3 = Straight PCB mount header
- ③ No. of Circuits:
see above table
- ④ Plating: 1 = Tin over Nickel
- ⑤ Variation:
Without mounting peg:
1 = UL 94V-2 (with drain holes)
3 = UL 94V-0 (with drain holes)
6 = UL 94V-2 (without drain hole)
7 = UL 94V-0 (without drain hole)
With mounting pegs:
4 = UL 94V-2 (with drain holes)
5 = UL 94V-0 (with drain holes)
8 = UL 94V-2 (without drain hole)
9 = UL 94V-0 (without drain hole)
- ⑥ Other Options: S = Single Row Header
*Special options consult manufacturer