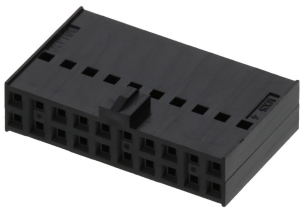




Part Number : [901420020](#)  
Product Description : 2.54mm Pitch C-Grid III  
Crimp Housing Dual Row, 20 Circuits, Black  
Series Number : 90142  
Status : Active  
Product Category : Connector Housings



## Documents & Resources


Drawings  
[Drawing 901420020\\_sd.pdf](#)

3D Models and Design Files  
[3D Model PDF 901420020.pdf](#)  
[3D Model 901420020\\_stp.zip](#)

Specifications  
[Product Specification PS-99020-0001-001.pdf](#)

## Product Environment Compliance

### Compliance

GADSL/IMDS	Not Relevant
China RoHS	
EU ELV	Not Relevant
Low-Halogen Status	Low-Halogen per IEC 61249-2-21
REACH SVHC	Not Contained per D(2023)3788-DC (14 Jun 2023)
EU RoHS	Compliant per EU 2015/863

### Multiple Part Product Compliance Statements

- Eu RoHS
- REACH SVHC
- Low-Halogen

### Multiple Part Industry Compliance Documents

- IPC 1752A Class C
- IPC 1752A Class D
- Molex Product Compliance Declaration

- IEC-62474  
- chemSHERPA (xml)

## EU RoHS Certificate of Compliance

---

### Part Details

#### General

Status	Active
Category	Connector Housings
Series	90142
Description	2.54mm Pitch C-Grid III Crimp Housing Dual Row, 20 Circuits, Black
Application	Signal, Wire-to-Board
Product Family	C-Grid III Interconnects
Product Name	C-Grid III
UPC	800753657786

#### Agency

CSA	LR19980
UL	E29179

#### Physical

Breakaway	No
Circuits (maximum)	20
Color - Resin	Black
Gender	Receptacle
Glow-Wire Capable	No
Keying to Mating Part	None
Lock to Mating Part	Yes
Material - Resin	PPO
Net Weight	1.280/g
Number of Rows	2
Packaging Type	Bag
Panel Mount	No
Pitch - Mating Interface	2.54mm

Pitch - Termination Interface	2.54mm
Polarized to Mating Part	Yes
Ports	0
Stackable	No
Temperature Range - Operating	-55° to +105°C

---

## Mates With / Use With

### Mates with Part(s)

Description	Part Number
C-Grid III Right-Angle Dual Row Headers	<u>90122</u>
C-Grid III Dual Row Headers	<u>90130</u>
C-Grid III Vertical Dual Row Headers	<u>90131</u>

### Use with Part(s)

Description	Part Number
Pre-Crimped Lead C-Grid III Female-to-C-Grid III Female, Tin (Sn) Plating, 150.00mm Length, 22 AWG, Black	<a href="/content/molex/molex-dot-com/us/en/products/product-page.html/797582022.html">/content/molex/molex-dot-com/us/en/products/product-page.html/797582022.html</a>
Pre-Crimped Lead C-Grid III Female-to-C-Grid III Female, Tin (Sn) Plating, 300.00mm Length, 22 AWG, Black	<a href="/content/molex/molex-dot-com/us/en/products/product-page.html/797582023.html">/content/molex/molex-dot-com/us/en/products/product-page.html/797582023.html</a>
C-Grid III Female Crimp Terminals	<u>90119</u>