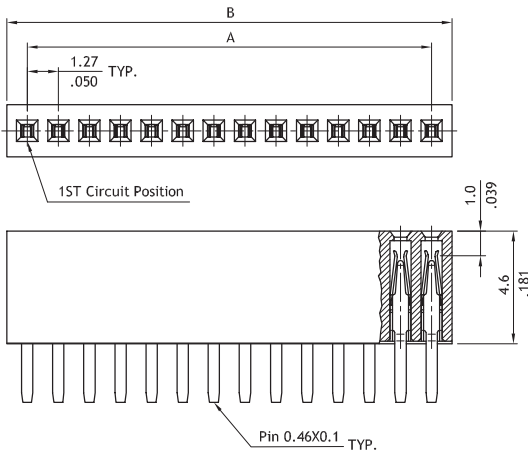
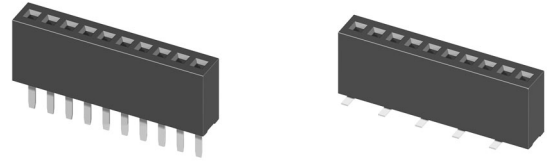


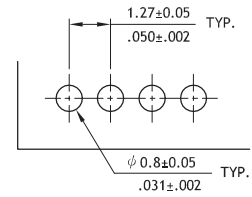
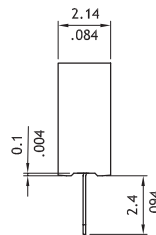
CB01 Series 1.27mm(.050") Single Row Female Headers

- Mates with CH01, CH02 and CH03 header
- Lead Free soldering process available

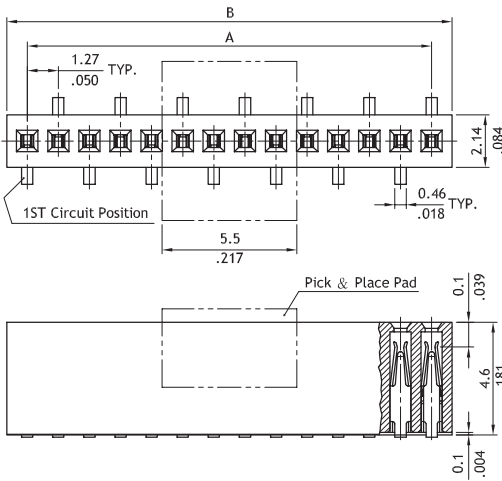
RoHS Compliant



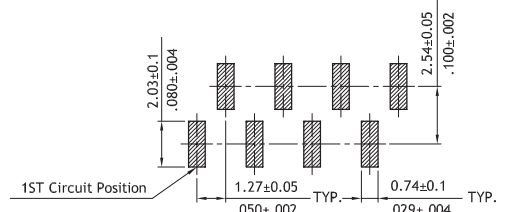
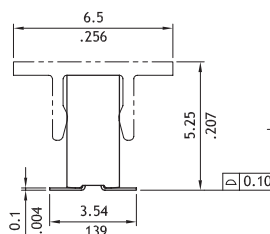
$A = 1.27 * \text{No. of Spaces}$
 $B = A + 1.67$



Recommended P.C. Board Layout



$A = 1.27 * \text{No. of Spaces}$
 $B = A + 1.67$



Recommended P.C. Board Layout

Ordering Code

1 **2** **3** **4** **5** **6** **7** **8**
CB01 04 2 M 1 00 - 2 P

- 1** Series No.
- 2** Circuits:
04 to 50
- 3** Plating code:
2= Gold flash over Nickel
*Optional plating available but MOQ requested
- 4** Tail Style:
M= SMT Type
D= DIP Type
- 5** Insulator Color: 1= Black
- 6** Other Options:
00= Standard
- 7** Pin Size for mate Pin header:
2= 0.4mm Square Pin
- 8** Packing options:
0= Without Pick & Place Pad (Tube packing)
P= With Pick & Place Pad (Tape & Reel)
*Code 7 and 8 for SMT Type only