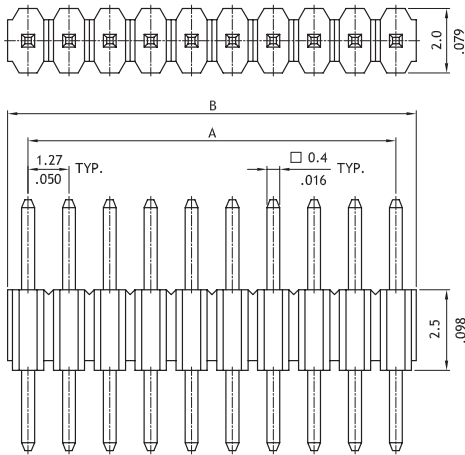
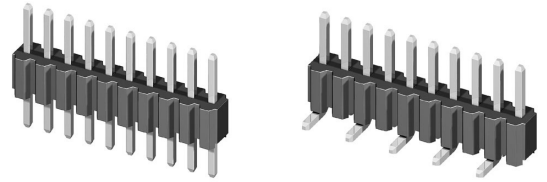


# CH02 Series 1.27mm(.050") Single Row Pin Headers

- Mates with CB01
- Lead Free soldering process available

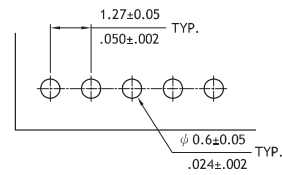
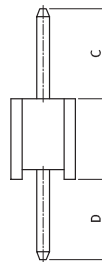
**RoHS** Compliant



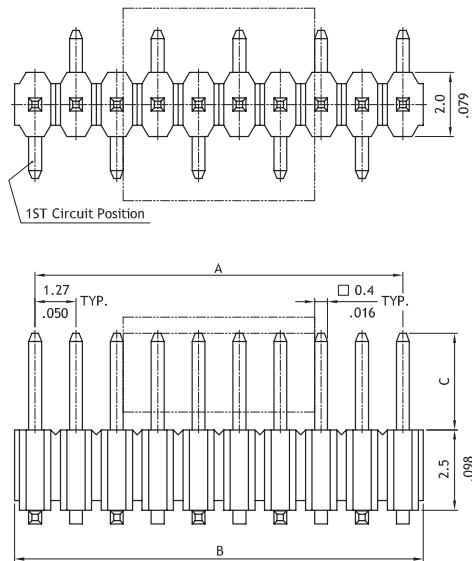
DIM. A = 1.27 X No. of Spaces  
DIM. B = DIM. A + 1.27

HN1X20-1.27

Option Code	Pin Dimension	
	C	D
00	3.0(.118)	2.3(.091)
01	4.5(.177)	3.0(.118)



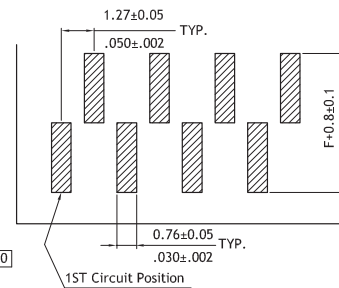
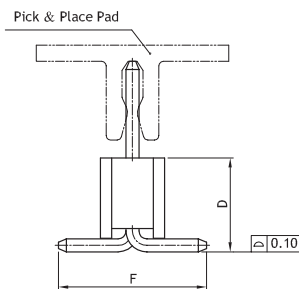
Recommended P.C. Board Layout



DIM. A = 1.27 X No. of Spaces  
DIM. B = DIM. A + 1.27

HN1X20-1.27 SMD

Option Code	Pin Dimension		
	C	D	F
00	3.0(.118)	2.92(.115)	4.6(.181)
01	8.0(.315)	3.0(.118)	4.6(.181)



Recommended P.C. Board Layout

## Ordering Code

**1** CH **2** **2** **5** **0** **2** **V** **1** **0** **0** - **0** **0**

- 1** Series No.
- 2** Circuits:  
04 to 50
- 3** Plating code:  
2= Gold flash over Nickel  
\*Optional plating available but  
MOQ requested
- 4** Tail & Mounting Style:  
V= Vertical Type  
M= Vertical SMT Type
- 5** Insulator Material & Color:  
1= Nylon 6T, Color Black
- 6** Other options: 00= Standard  
\* See option code table  
\* Consult manufacturer for customized pin length
- 7** Pin size:  
0= Original design
- 8** 0= Without Pick & Place Pad (Tube)  
P= With Pick & Place Pad (Tape & Reel)  
\*Number 7 and 8 only for SMT type