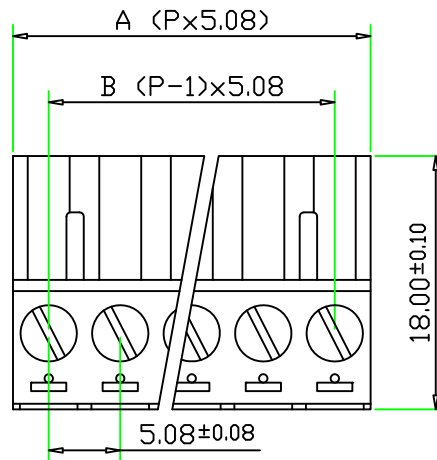
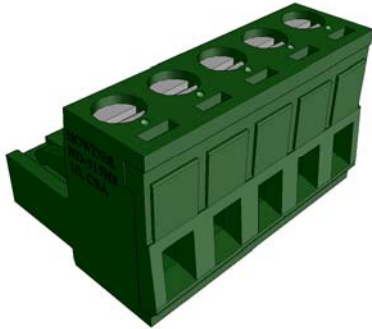


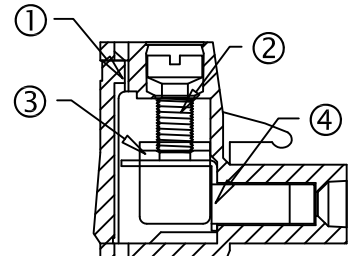
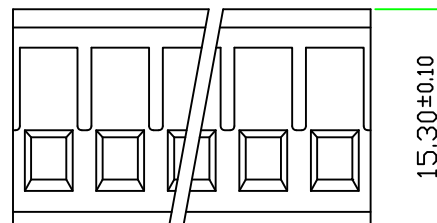


# HOWDER

## Pluggable type terminal block



ROHS



Part Number:

HD-515H8-□P

↑ Pole Size 2~24P

### SPECIFICATIONS

- ① Housing Material: Polyamide 66(UL94V-0), Green
- ② Screw: M2.6 Nickel Plated Steel
- ③ Wire Clamp: Nickel Plated Brass
- ④ Contact: Tin Plated Phosphorus Bronze

Screws Torque: 7 In-Lb

Wire Range: 12~16 AWG

Rated: 12 Amperes.AC250V

Operation Temperature: -55°C~+115°C

Insulation withstands volt: AC2000V min

Insulation resistance: >1000MΩ or more at DC500V