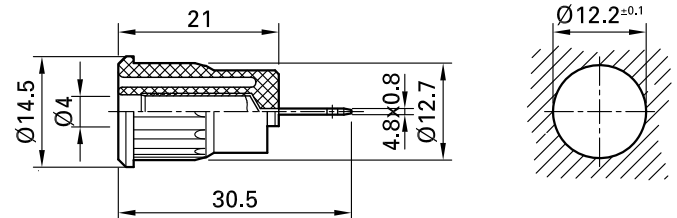


SEB4-F/A



Item number 23.3160-*

Insulated, rigid, \varnothing 4 mm, accepting spring-loaded \varnothing 4 mm plugs with rigid insulating sleeve. Brass sheet. The socket is pressed into pre-drilled panels of plastic, metal, etc. Flat connecting tab 4.8 mm x 0.8 mm, can be bent to 90°, once only.

| Technical data | |
|--------------------------------------|---|
| Diameter of plug system | 4 mm |
| Rated Values | 1000 V, CAT III, 24 A |
| Surface treatment electrical contact | Ni |
| Base material electrical contact | CuZn |
| Colours * | 20 21 22 23 24 25 |
| Test accessory acc. to | IEC EN 61010-2-030 |
| Material insulating part | PA |
| Approvals | UR |
| Remarks | Accessories: Flat connecting receptacles FSH4,8x0,8; Press-in tool MB4-S |