

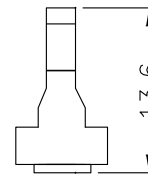
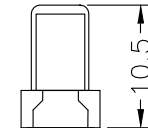
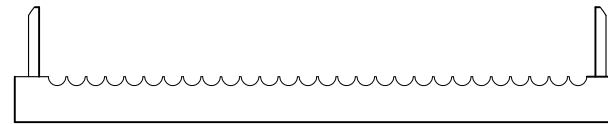
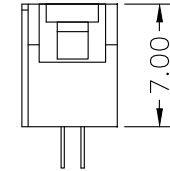
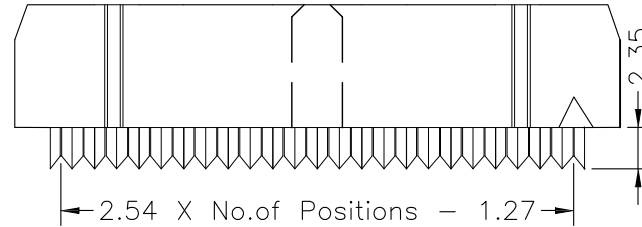
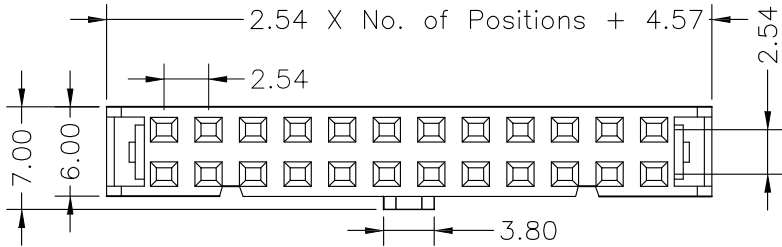
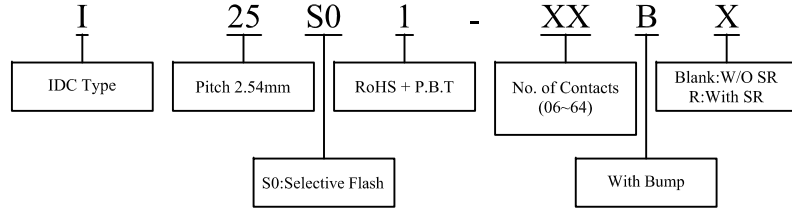
### Specifications

Current Rating: 3A AC,DC  
 Contact Resistance: 20mΩ Max  
 Insulation Resistance: 1000MΩ Min  
 Withstanding Voltage: 1000V AC/minute  
 Temperature Range: -55°C ~ +105°C

### Material

Insulator: P.B.T, UL94V-0  
 Contact: Brass  
 Cable: Pitch 1.27mm Flat Cable

### ORDER INFORMATION



			<b>MCT</b>	PART NO.	I25S01-XXBX	DATA	2007/01/19
				DRAWING NO.	I25S01-XXBX	DRAWN	Sayid
				CUSTOMER P/N		APPROVED	Max
REV.	DESCRIPTION	DATA	TITLE: IDC Socket 2.54mm	REV. A	TOLERANCE .X ±0.25 .XX ±0.20	SCALE FREE	UNIT mm