

# BoPad

Hand-held enclosure with battery compartment, IP40 (IP65)



BOP 900 BE4MN-9016

Order no.: 35190026

\* = Available on request.

## Characteristics

Colour of enclosure group

White, similar to RAL 9016

Protection class

IP 40, 65

Enclosure Material

Enclosures: ABS

Seal / impact protection: TPE

For details see technical information

Scope of delivery

Lid and base, 4 screws, battery compartment lid, screws, battery contacts

Note

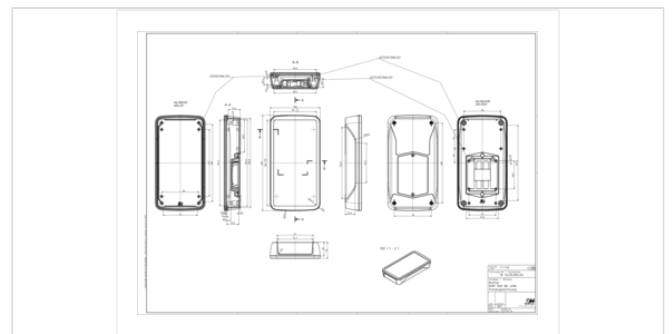
Upgradable to IP65 with design seal BOP\_ DI.

## Dimensions

Dimensions

200 x 105 x 34 mm

Product drawing



## Technical documentation / Downloads

### Technical drawings

3D product data in STEP format: 35190026 BOP-900-BE4MN-9016.stp (7.4 MB)

Drawing for mechanical processing: 35190026 BOP-900-BE-4MN-9016-G.dxf (1.4 MB)

Milling contours are shown here as a DXF file. (Sub D, USB, HDMI, cable glands, ...)

Product drawing in PDF format: 35190026 BOP-900-BE4MN-9016.pdf (240.3 KB)

Product drawing in DXF format: 35190026 BOP-900-BE4MN-9016.dxf (2.7 MB)

Drawing for max. PCB dimensions in PDF format: 35190026 BOP-900-BE-4MN-9016-pcb.pdf (181.3 KB)

Drawing for max. PCB dimensions in DXF format: 35190026 BOP-900-BE-4MN-9016-pcb.dxf (1.1 MB)

## Product information

bopad en.pdf (952.2 KB)

## Assembly Instructions

BoPad BOP Batteriekontakte Battery Contacts 35999902.pdf (1.7 MB)

## Important!

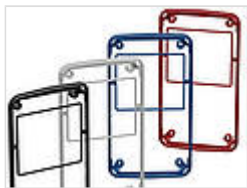
---

To compensate for pressure when temperatures change and cause moisture in the enclosure, we recommend that you use a pressure compensation element.

» Additional information

## Matching accessories

---



### Design seal, IP65

35290005	BOP 900 DI-9005	Black
35290006	BOP 900 DI-9016	White
35290000	BOP 900 DI-5005	Signal blue
35290001	BOP 900 DI-3001	Signal red



### Impact protection

35390005	BOP 900 S-9005	Black
35390000	BOP 900 S-5005	Signal blue
35390001	BOP 900 S-3001	Signal red
35390003	BOP 900 S-1003	Signal yellow



### Screw covers for enclosure screws

35007406	BOP-SA-9016	White
----------	-------------	-------



### Universal VESA standard (75x75) wall fitting, polyamide glass fibre reinforced

35111016	VESA 75 WB-9016	White
----------	-----------------	-------



### Screws (SHR) and distance bolts (DIBLZ) for mounting bosses in plastic enclosures

59006190	SHR Z KA25x6	SD = 2.5 / ND = 2.0 / KD = 4.4
----------	--------------	--------------------------------