



SUNNYWAY

SWP001

PN: SW19001IG97



Sunnyway Technology

Add: Building 65-302, No.421 Hongcao Road, Xuhui District, Shanghai
Tel: +86-021-6484 2326 Fax: +86-021-6484 2328
Email: sales@sunny-way.com Web: www.sunny-way.com



1. Electrical Specifications

Standards	5G/4G/3G/2G
Frequency range	600~6000mhz
Peak Gain(dBi)	0~2dBi
Average Gain(dBi)	-1~-3dB
Polarization mode	Linear
VSWR	~2
Return Loss	~-6
Efficiency(%)	40~60%
Radiation pattern	Omni-Directional
Output impedance (Ω)	50
Max. Input Power(W)	25

2. Mechanical and Environmental Specification

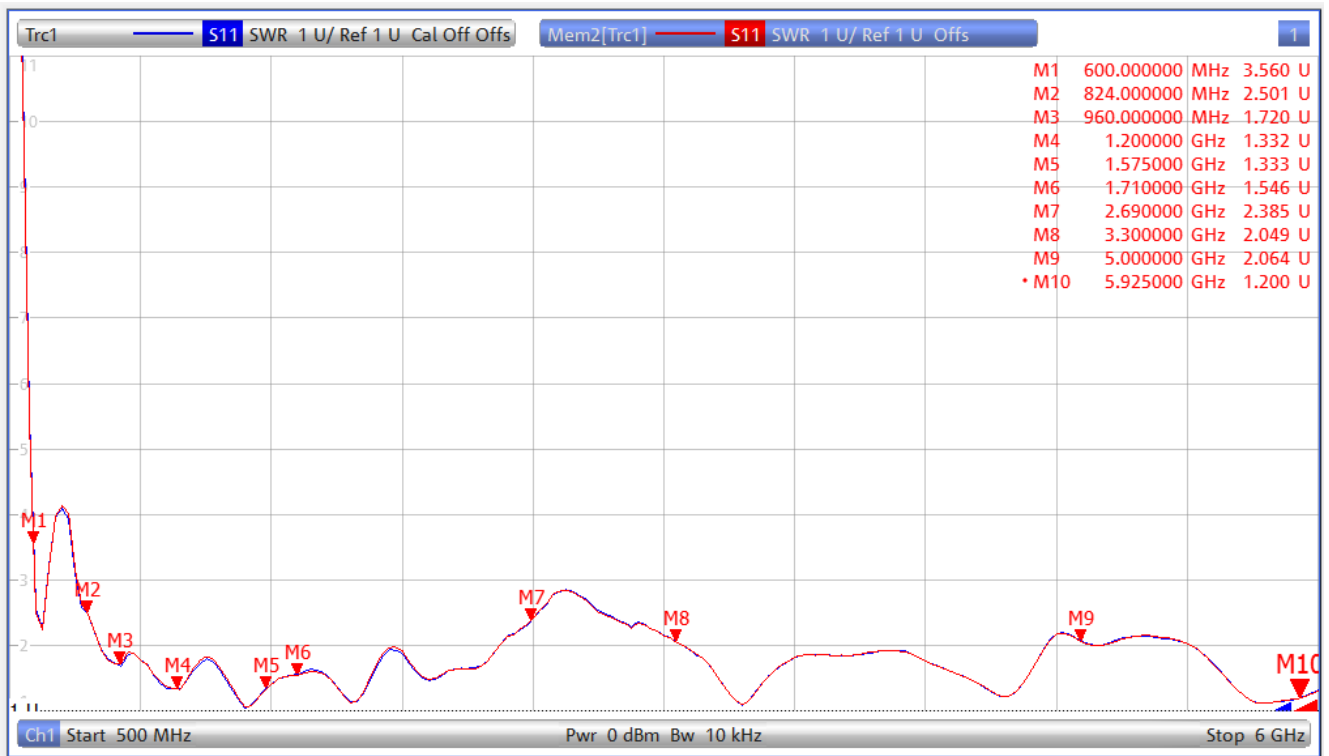
Mounting Type	Adhesive
Adhesive Type	3M9448A
Connector Type	U.FL Standard
Antenna size(mm)	112.5mm (L) x 16.2mm (W) x 0.8mm (H)
Material	PCB
Cable length(mm)	101mm



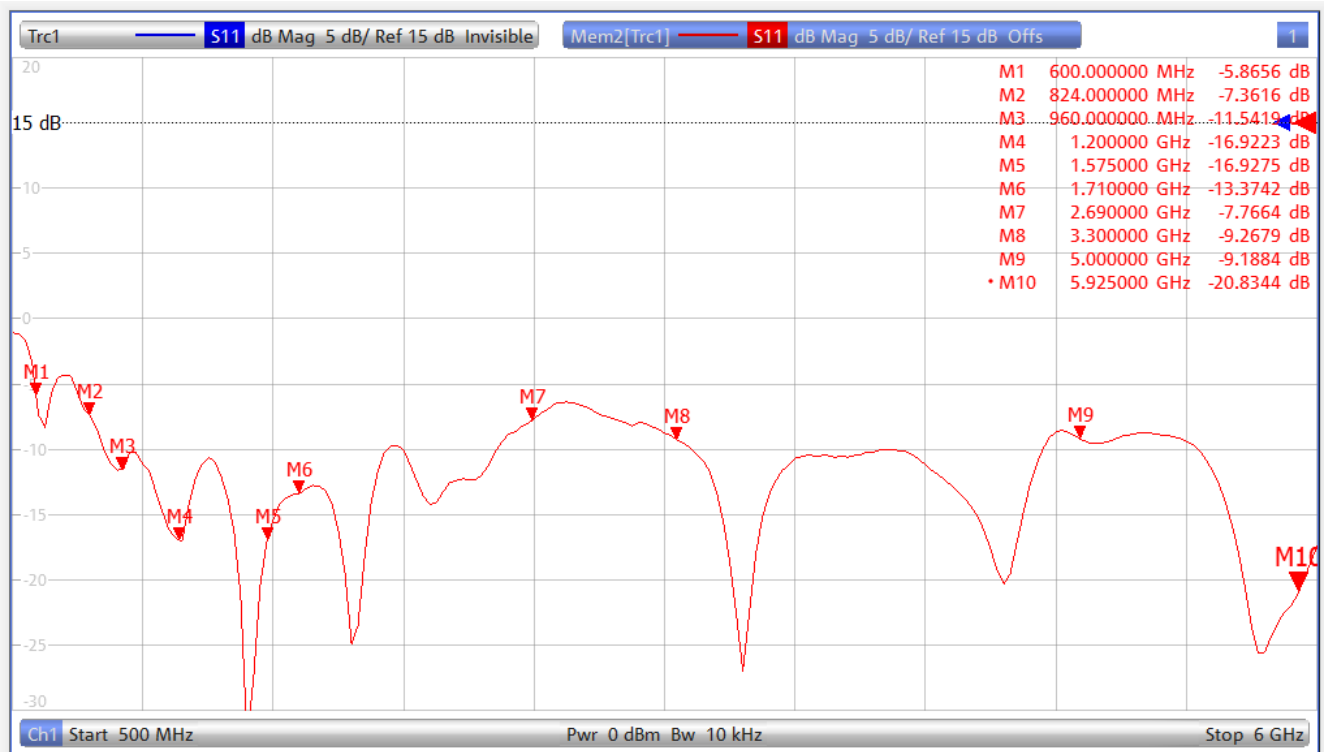
Operating Temperature (°C)	- 40 °C ~ + 85 °C
Storage Temperature(°C)	-40°C ~ +85 °C

3. Antenna parameters

FRE (MHz)	600	824	960	1200	1575	1710	2690	3300	5000	5925
VSWR	3.56	2.50	1.72	1.33	1.33	1.55	2.39	2.05	2.06	1.20
Return Loss	-5.86	-7.36	-11.5	-16.9	-16.9	-13.4	-7.77	-9.27	-9.19	-20.8
UEff(%)	39.4	33.9	3.19	59.7	75.0	53.7	57.9	48.8	47.2	57.4
AVE Gain(d BI)	-4.04	-4.69	-4.96	-2.24	-1.25	-2.70	-2.37	-3.11	-3.26	-2.41



VSWR

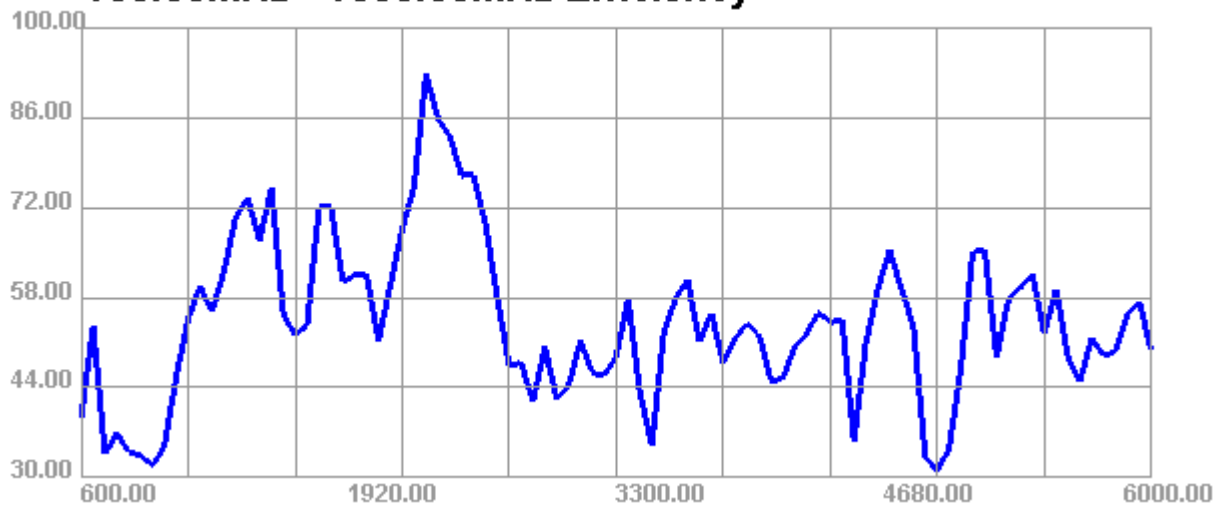


Return Loss



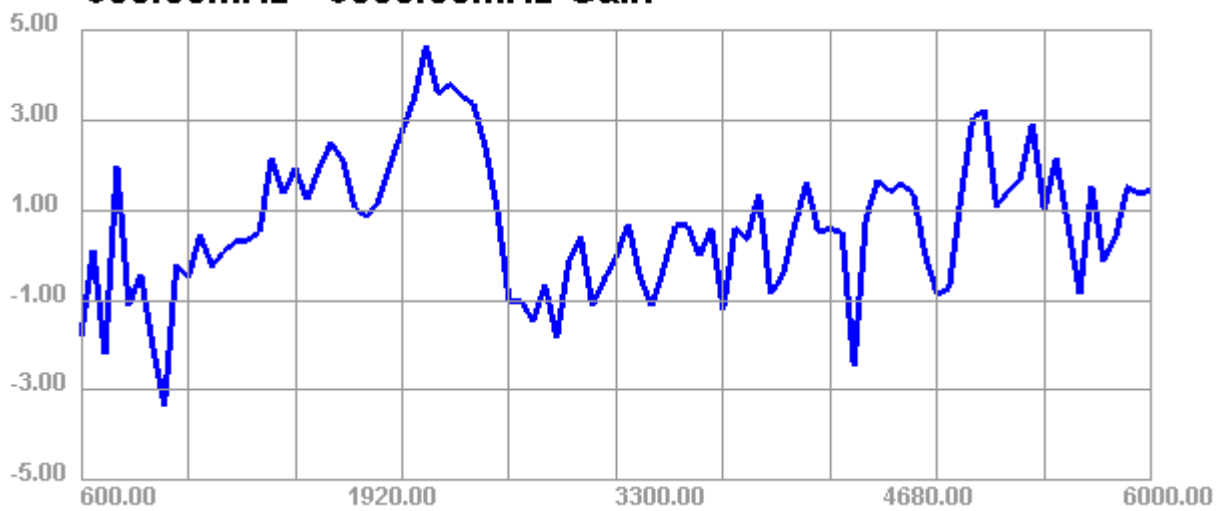
Efficiency

600.00MHz - 6000.00MHz Efficiency

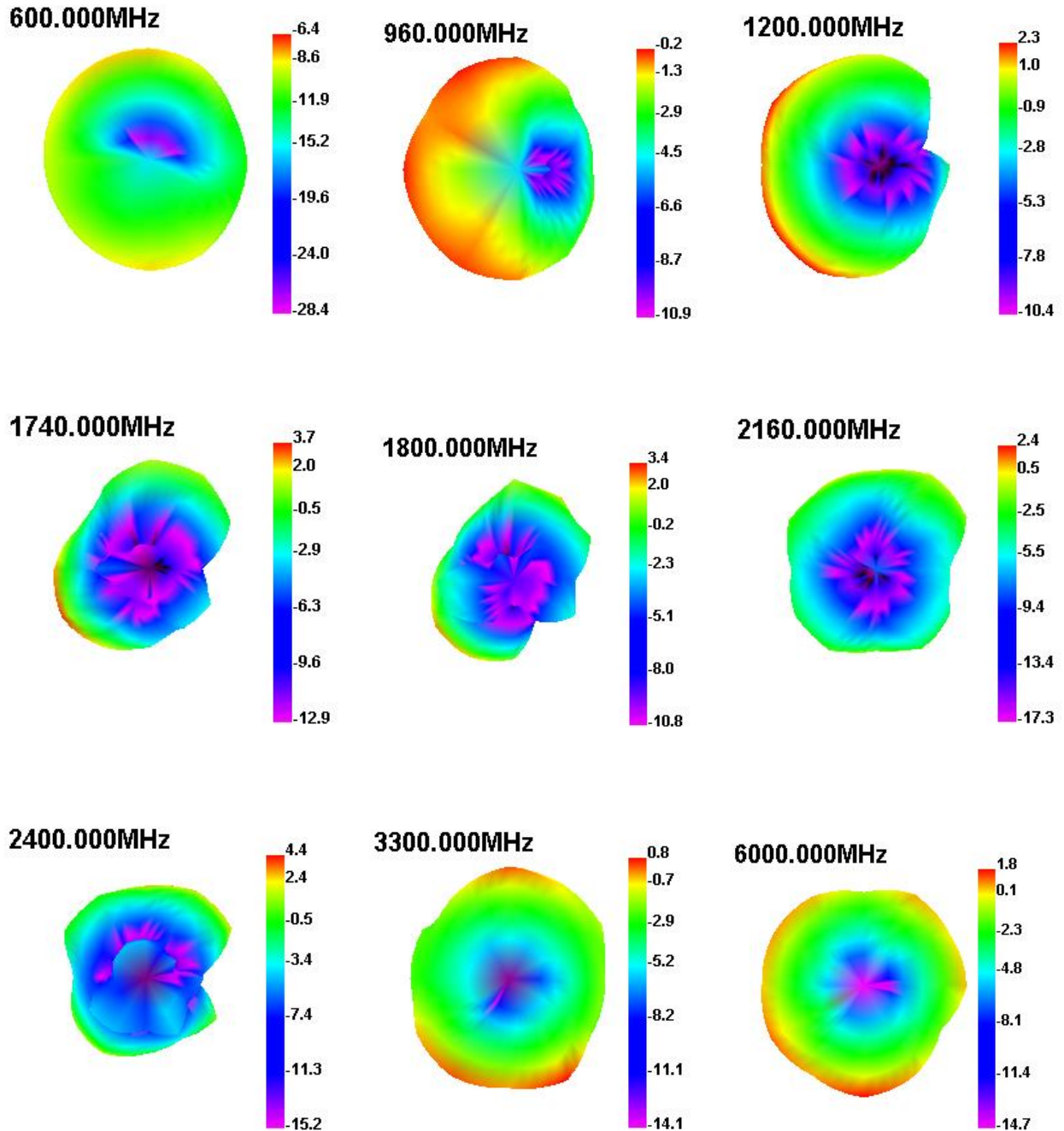


GAIN

600.00MHz - 6000.00MHz Gain



Directional pattern





4. Antenna Drawings

