



**SUNNYWAY**

# **SWP004**

**PN: SW19004IG97**



**Sunnyway Technology**

Add: Building 65-302, No.421 Hongcao Road, Xuhui District, Shanghai

Tel: +86-021-6484 2326 Fax: +86-021-6484 2328

Email: [sales@sunny-way.com](mailto:sales@sunny-way.com) Web: [www.sunny-way.com](http://www.sunny-way.com)



## 1. Electrical Specifications

Standards	WiFi 2.4G + 5.8G
Frequency range	2400~2500,5200~5800mhz
Peak Gain (dBi)	2~3dBi
Average Gain (dBi)	-1~-2dB
Polarization mode	Linear
VSWR	~1.5
Return Loss	~-12dB
Efficiency (%)	60%
Radiation pattern	Omni-Directional
Output impedance ( $\Omega$ )	50
Max. Input Power(W)	25

## 2. Mechanical and Environmental Specification

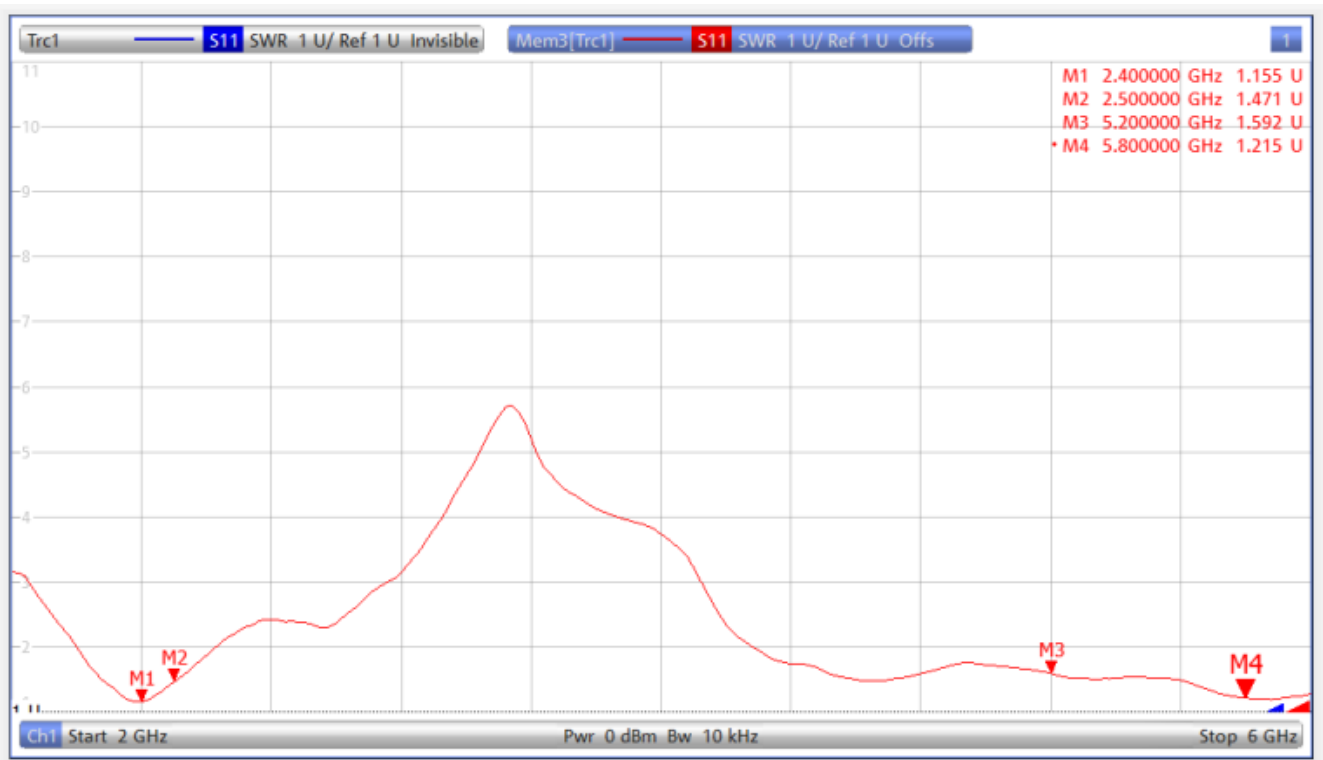
Mounting Type	Adhesive
Adhesive Type	3M9448A
Connector Type	U.FL Standard
Antenna size(mm)	50.7mm (L) x 9.0mm (W) x 0.6mm (H)
Material	PCB



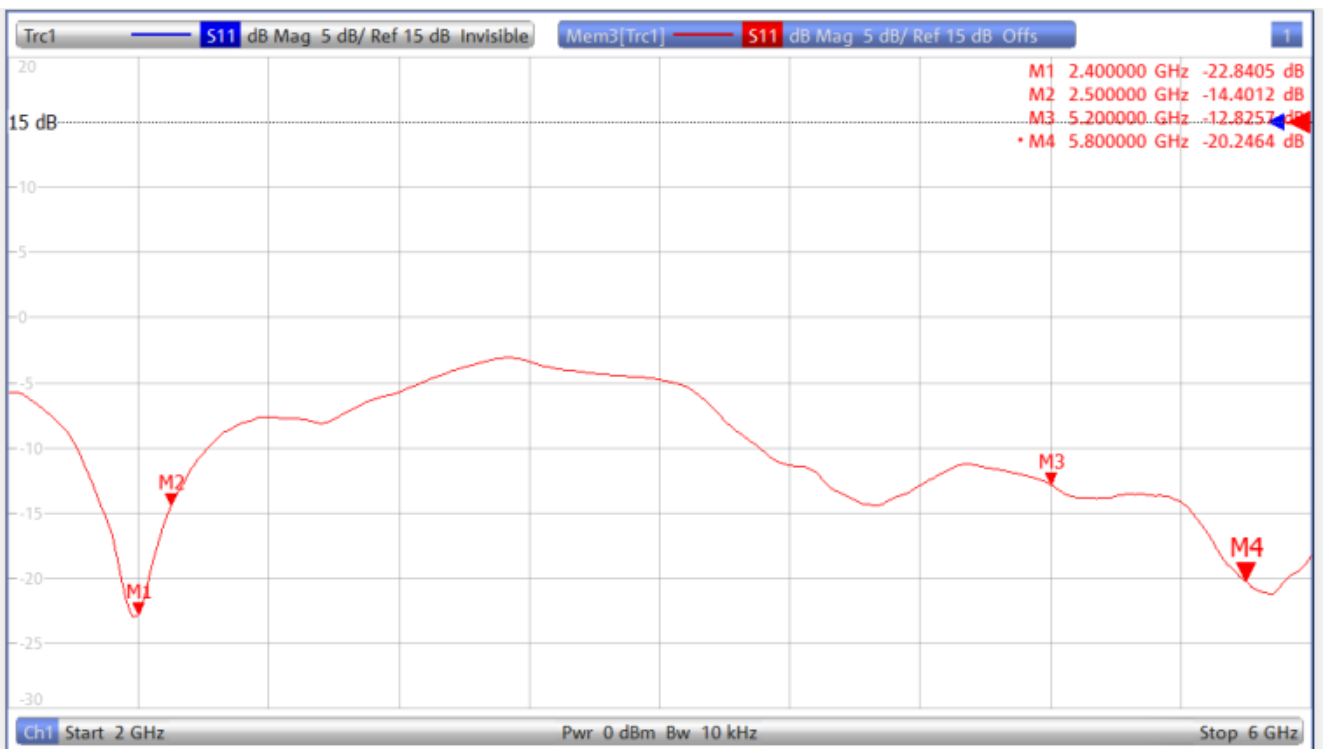
Cable length(mm)	101mm
Operating Temperature (°C)	- 40 °C ~ + 85 °C
Storage Temperature(°C)	- 40 °C ~ + 85 °C

### 3. Antenna parameters

FRE (MHz)	2400	2500	5200	5800
VSWR	1.15	1.47	1.59	1.21
Return Loss	-22.8	-14.4	-12.8	-20.2
Eff (%)	61.5	62.3	70.4	60.53
PEAK Gain(dBi)	2.72	2.54	2.71	2.13

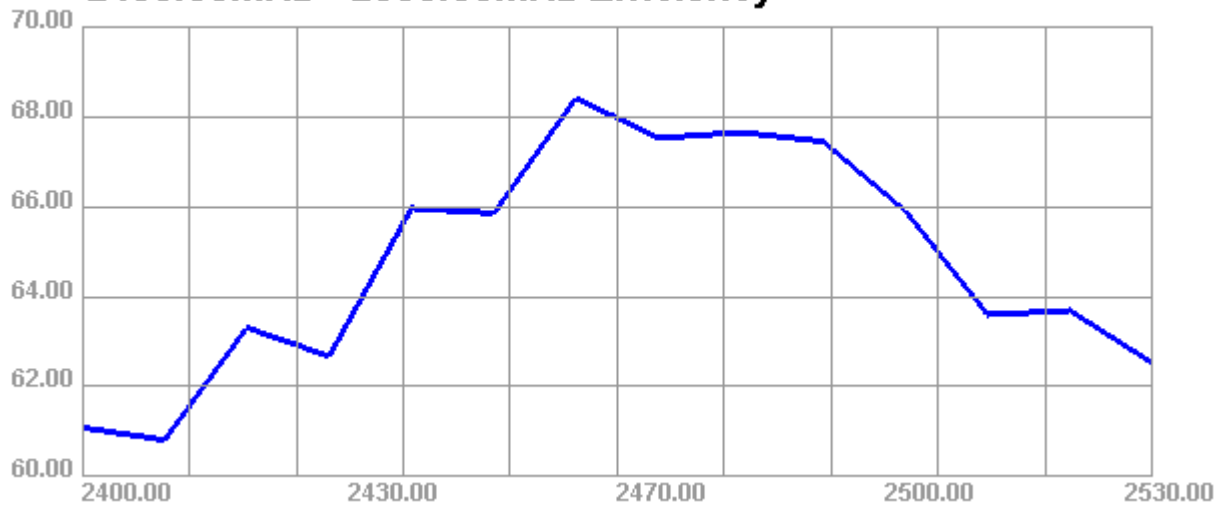


## VSWR

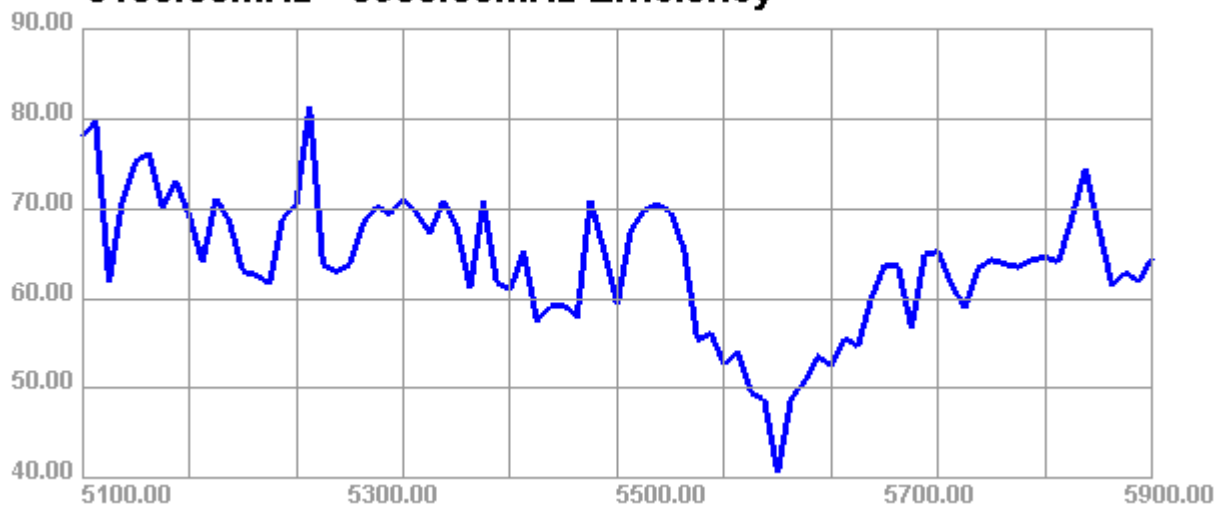


## Return Loss

### 2400.00MHz - 2530.00MHz Efficiency

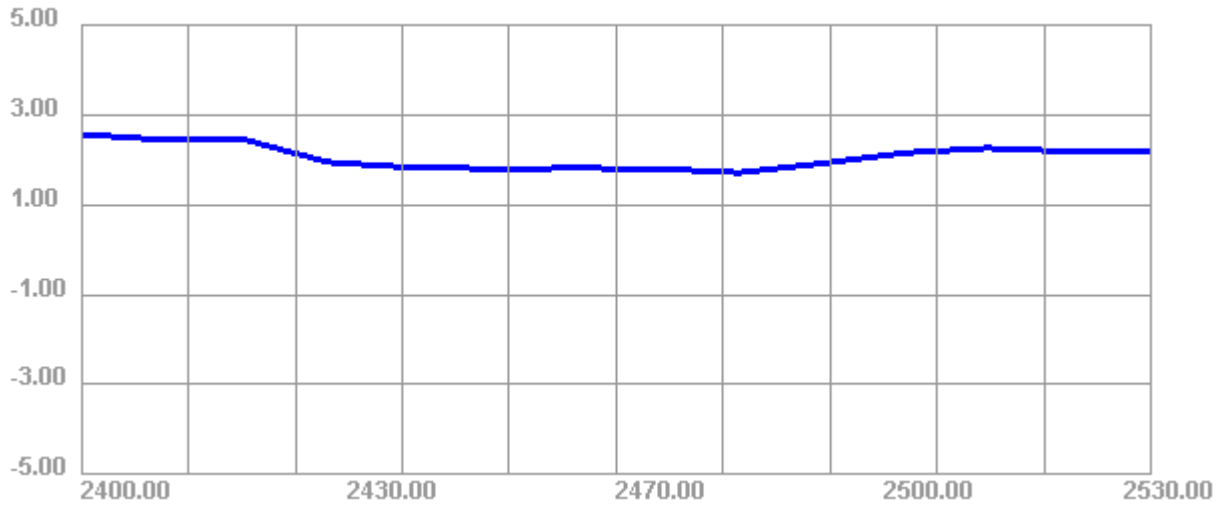


### 5100.00MHz - 5900.00MHz Efficiency

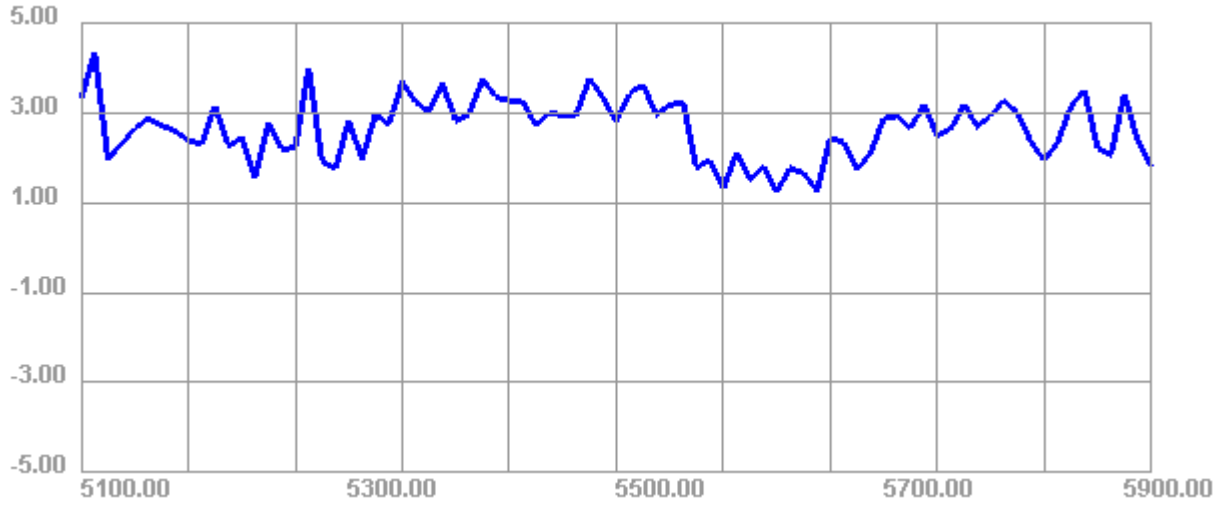




### 2400.00MHz - 2530.00MHz Gain

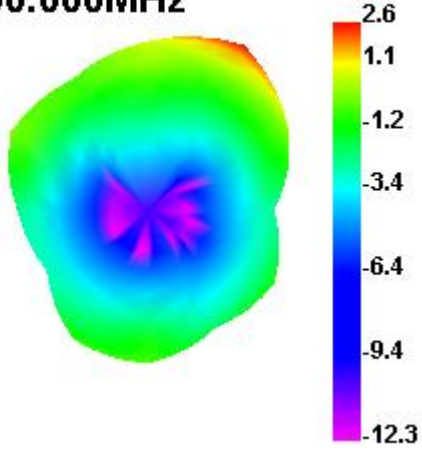


### 5100.00MHz - 5900.00MHz Gain

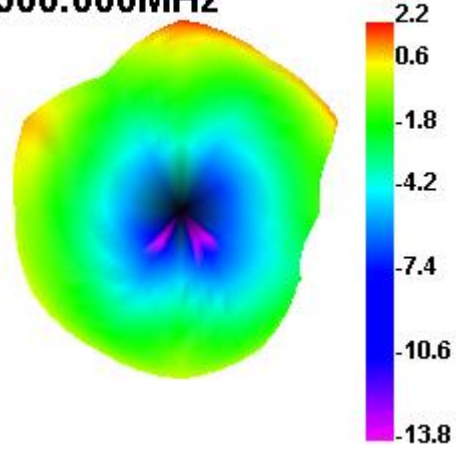


# Directional pattern

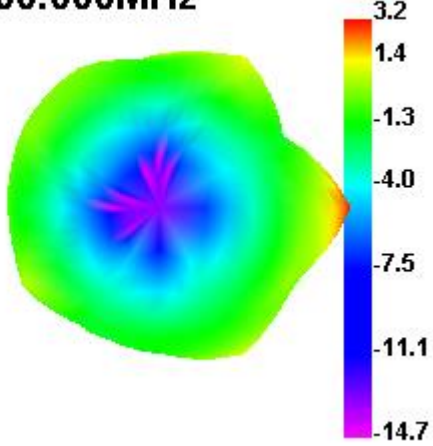
2400.000MHz



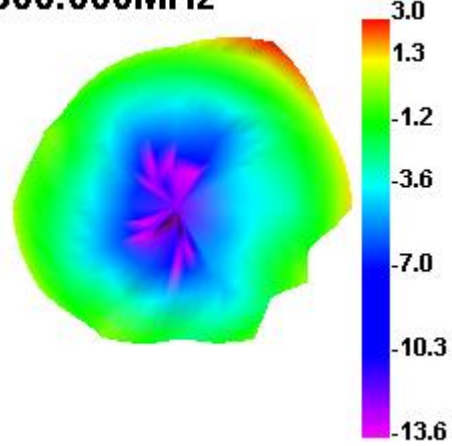
2500.000MHz



5200.000MHz



5800.000MHz





# 4. Antenna Drawings

