



SUNNYWAY

SWE014

PN: SW19044EB56



Sunnyway Technology

Add: Building 65-302, No.421 Hongcao Road, Xuhui District, Shanghai
Tel: +86-021-6484 2326 Fax: +86-021-6484 2328
Email: sales@sunny-way.com Web: www.sunny-way.com

1. Electrical Specifications

Standards	4G/3G/2G
Frequency range	824~960,1710~2690MHz
Peak Gain(dBi)	0~4dBi
Average Gain(dBi)	-3~0dB
Polarization mode	Linear
VSWR	~1.5~3.8
Return Loss	~-5
Efficiency(%)	40~90%
Radiation pattern	Omni-Directional
Output impedance (Ω)	50
Max. Input Power(W)	25

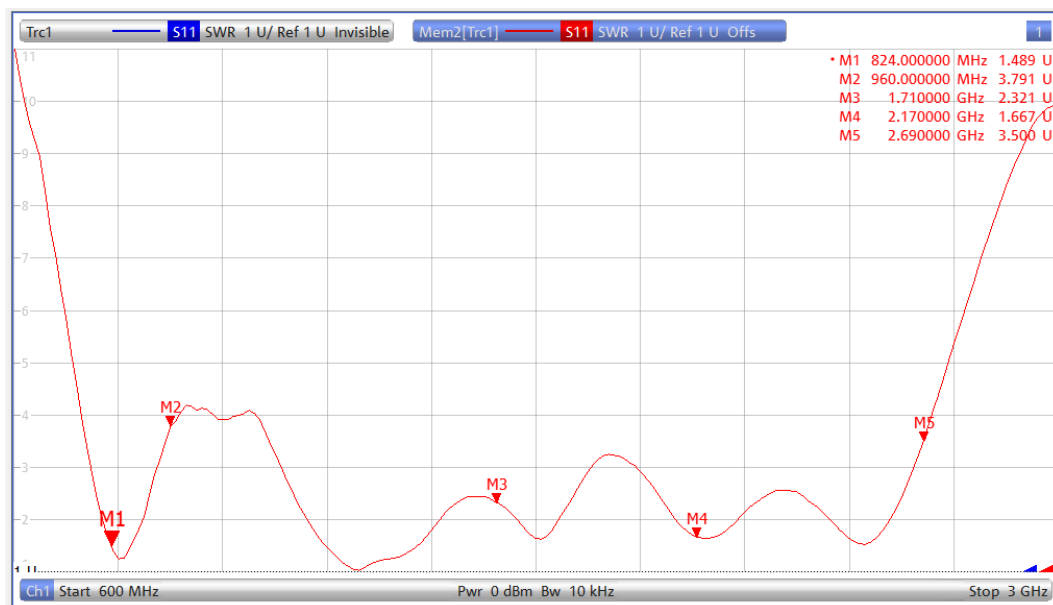
2. Mechanical and Environmental Specification

Mounting Type	Connector Mount
Connector Type	SMA
Antenna size(mm)	195x ϕ 13mm
Material	ABS
Operating Temperature ($^{\circ}$ C)	- 40 $^{\circ}$ C ~ + 85 $^{\circ}$ C

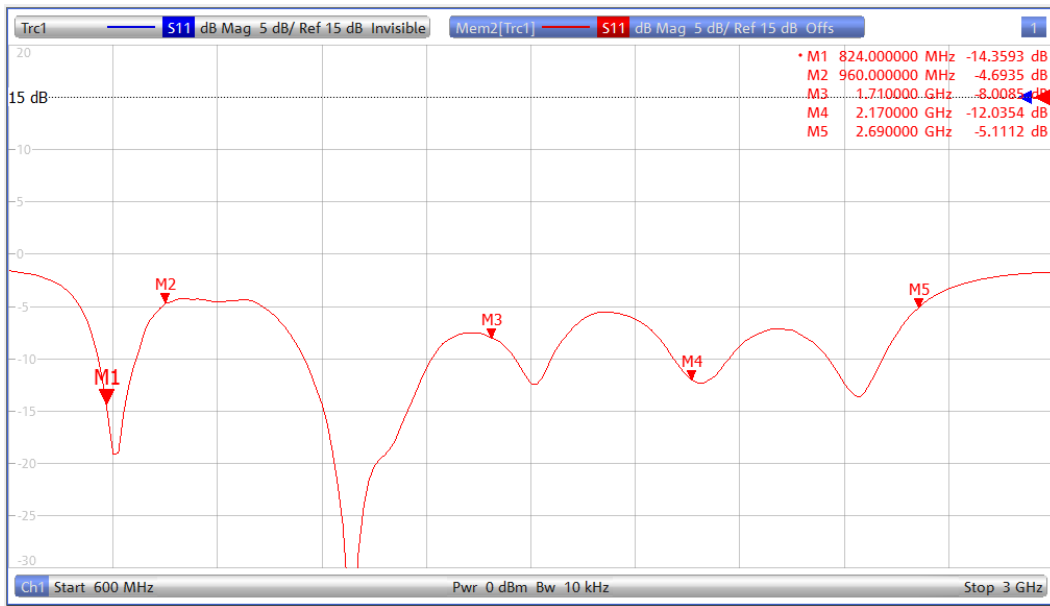
Storage Temperature(°C)	- 40 °C ~ + 85 °C
-------------------------	-------------------

3. Antenna parameters

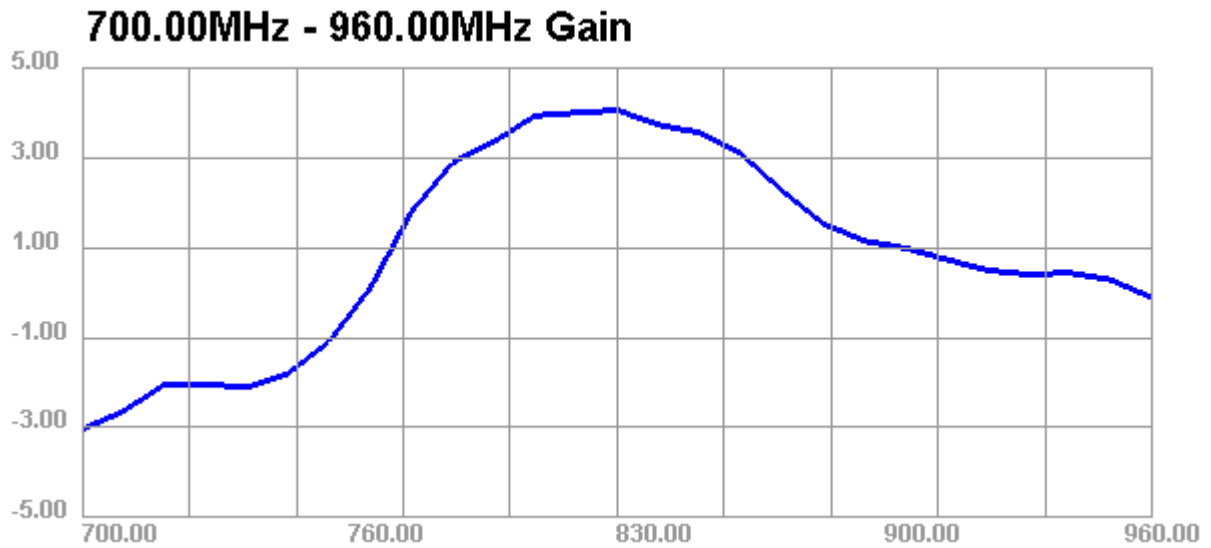
FRE (MHz)	824	960	1710	2170	2690
VSWR	1.48	3.79	2.32	1.66	3.50
Return Loss	-14.3	-4.69	-8.00	-12.0	-5.11
Eff(%)	93.0	59.7	51.3	57.7	39.1
PEAK Gain(dBI)	4.00	-0.11	3.25	0.81	-0.98



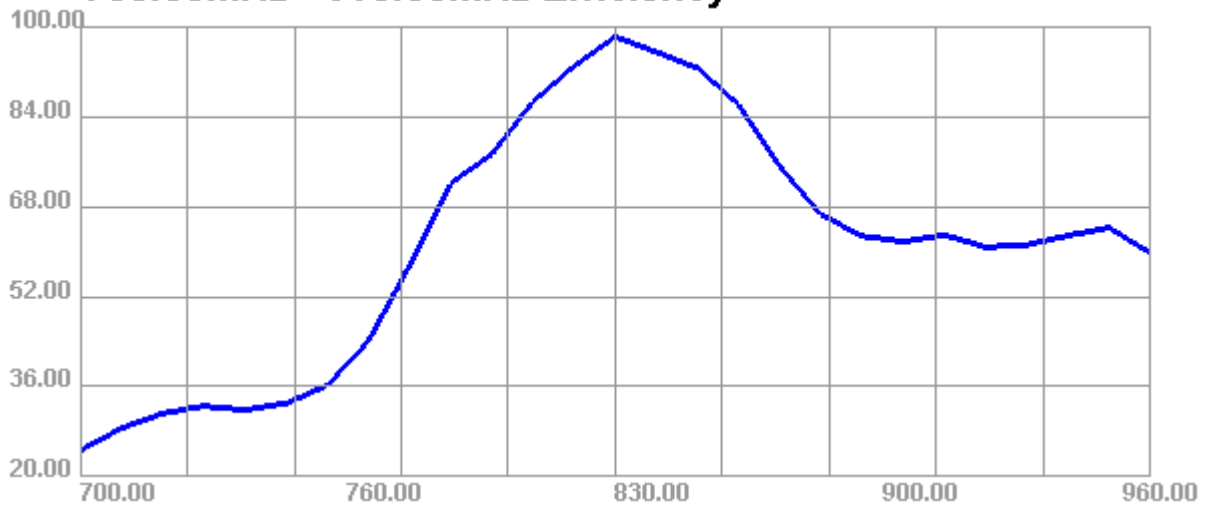
VSWR



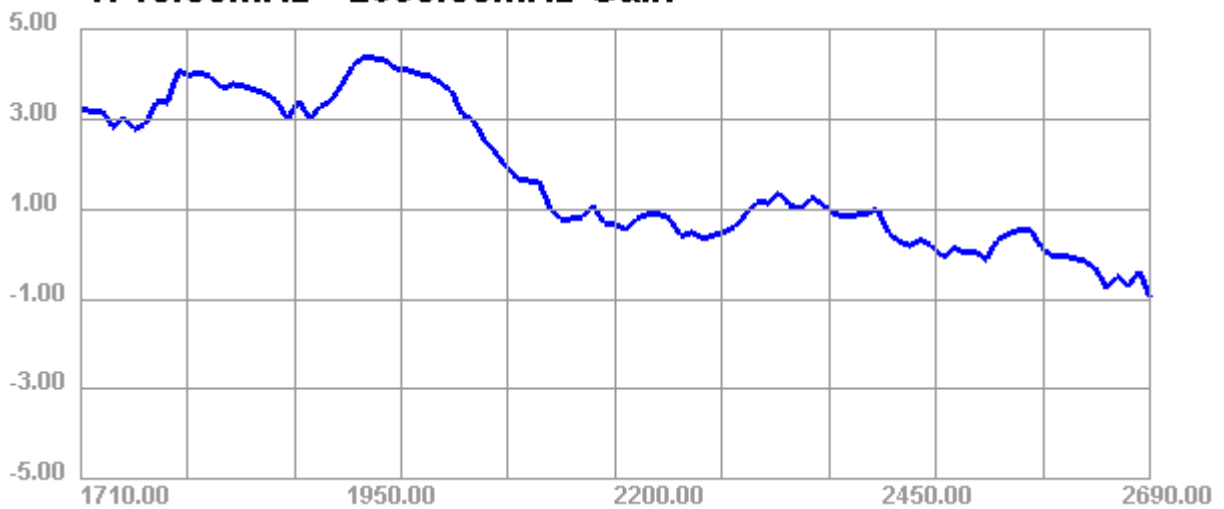
Return Loss



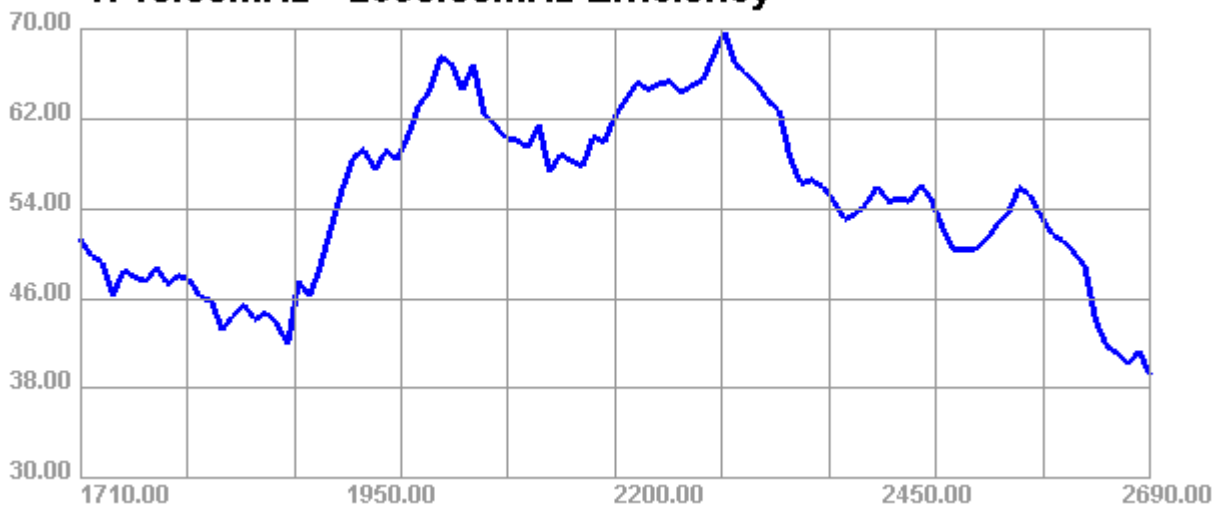
700.00MHz - 960.00MHz Efficiency



1710.00MHz - 2690.00MHz Gain

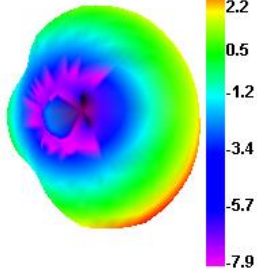


1710.00MHz - 2690.00MHz Efficiency

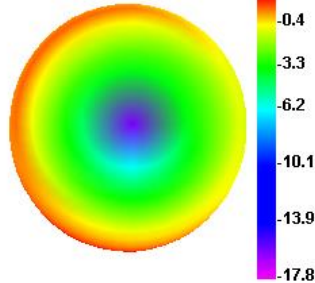


Directional pattern

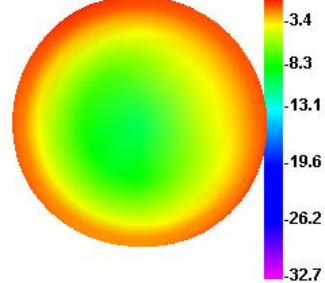
800.000MHz



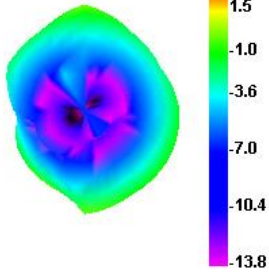
880.000MHz



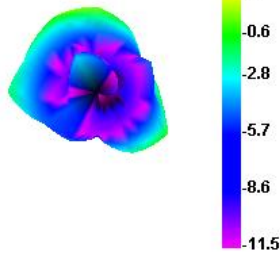
960.000MHz



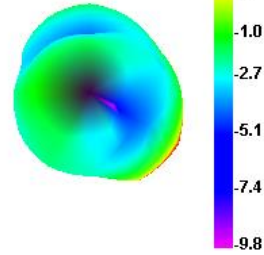
1710.000MHz



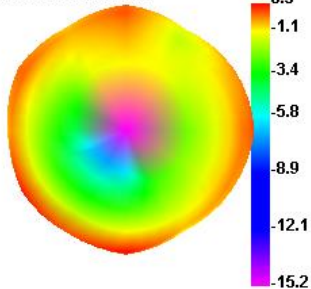
1900.000MHz



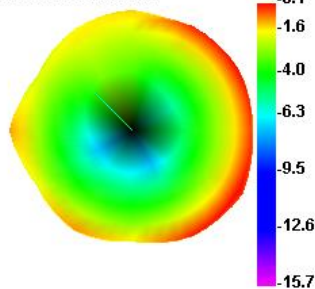
2100.000MHz



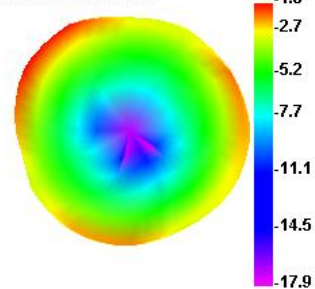
2300.000MHz



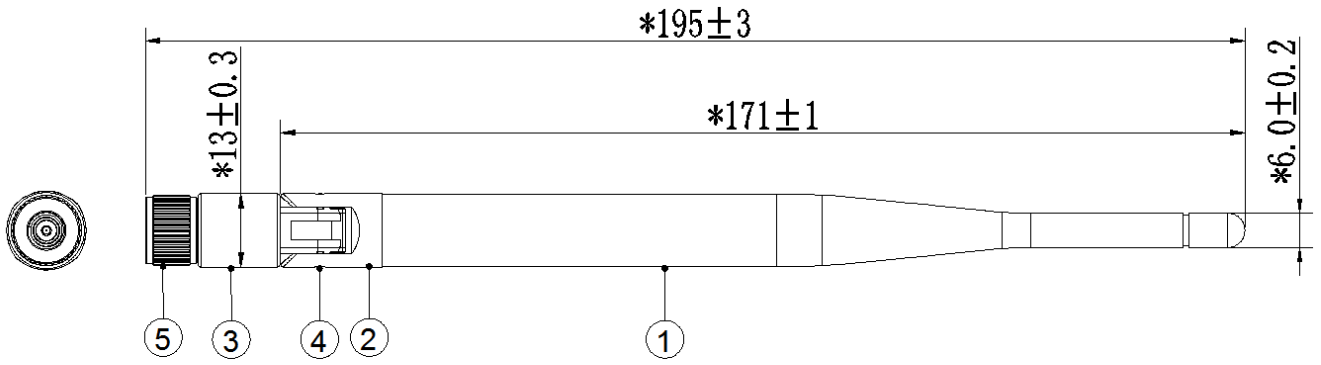
2500.000MHz



2690.000MHz



4. Antenna Drawings



5	SMA	SMA-J	black	1
4	rivet	PC+PBT	black	2
3	Lower Firmware	ABS	black	1
2	Upper firmware	ABS	black	1
1	noumenon	ABS	black	1
Series	Component name	Specification	Color	Quantity