



SUNNYWAY

SWE010

PN: SW19040EB56



Sunnyway Technology

Add: Building 65-302, No.421 Hongcao Road, Xuhui District, Shanghai

Tel: +86-021-6484 2326

Fax: +86-021-6484 2328

Email: sales@sunny-way.com

Web: www.sunny-way.com



1. Electrical Specifications

Standards	4G/3G/2G
Frequency range	700~960,1710~2690MHz
Peak Gain(dBi)	0~2dBi
Average Gain(dBi)	-1~-2dB
Polarization mode	Linear
VSWR	~2-3
Return Loss	~-5dB
Efficiency(%)	40~60%
Radiation pattern	Omni-Directional
Output impedance (Ω)	50
Max. Input Power(W)	25

2. Mechanical and Environmental Specification

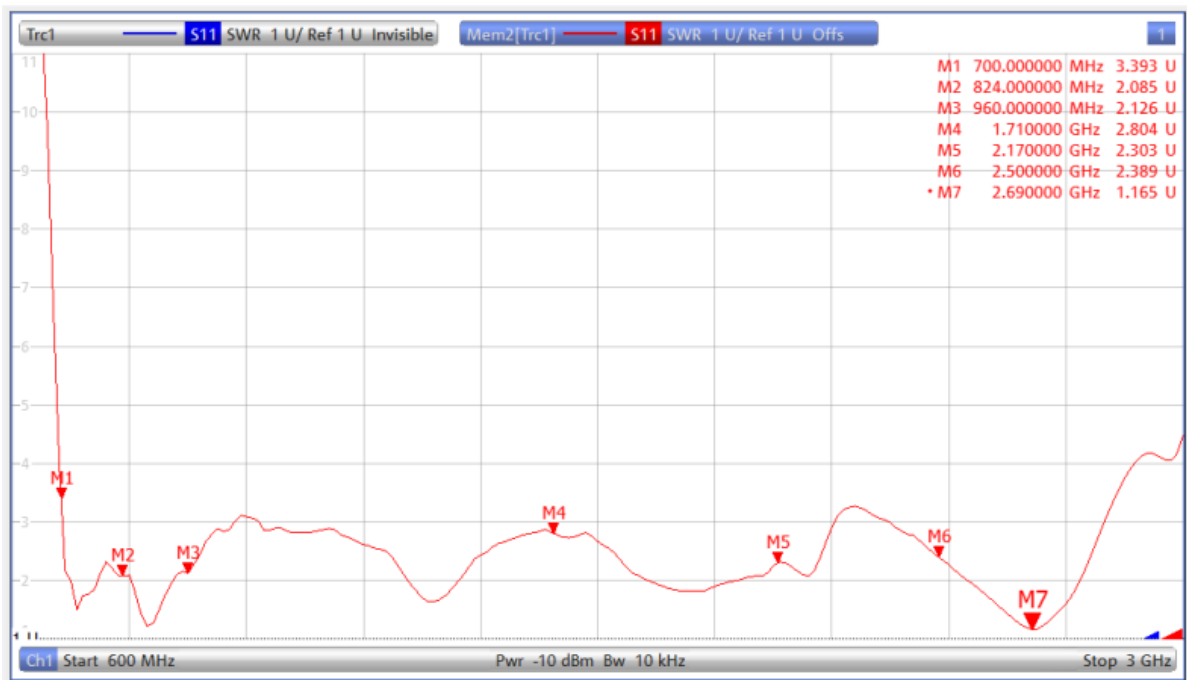
Mounting Type	Connector Mount
Connector Type	SMA
Antenna size(mm)	190mm*16.2mm
Material	ABS
Operating Temperature ($^{\circ}\text{C}$)	- 40 $^{\circ}\text{C}$ ~ + 85 $^{\circ}\text{C}$



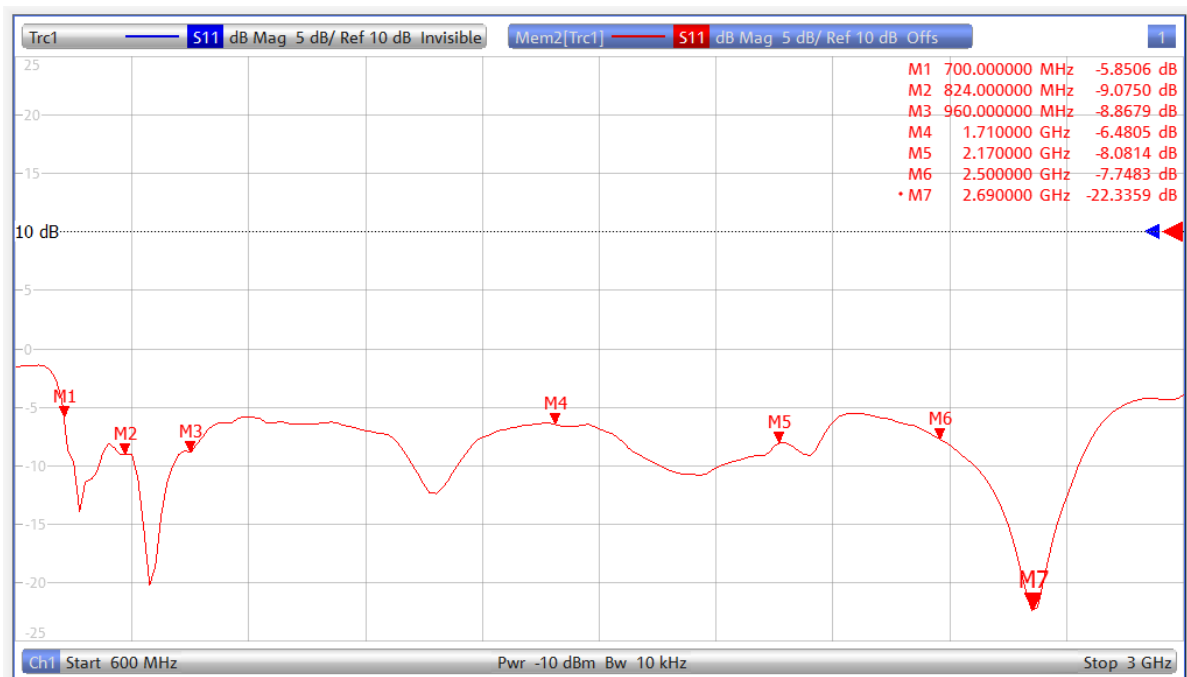
Storage Temperature(°C)	- 40 °C ~ + 85 °C
-------------------------	-------------------

3. Antenna parameters

FRE (MHz)	700	824	960	1710	2170	2500	2690
VSWR	3.39	2.08	2.12	2.80	2.30	2.38	1.16
Return Loss	-5.85	-9.07	-8.86	-6.48	-8.08	-7.74	-22.3
Eff(%)	70.2	56.0	51.3	53.1	58.0	40.1	42.4
PEAK Gain(dBI)	0.96	1.68	0.19	1.65	0.92	-0.49	0.49



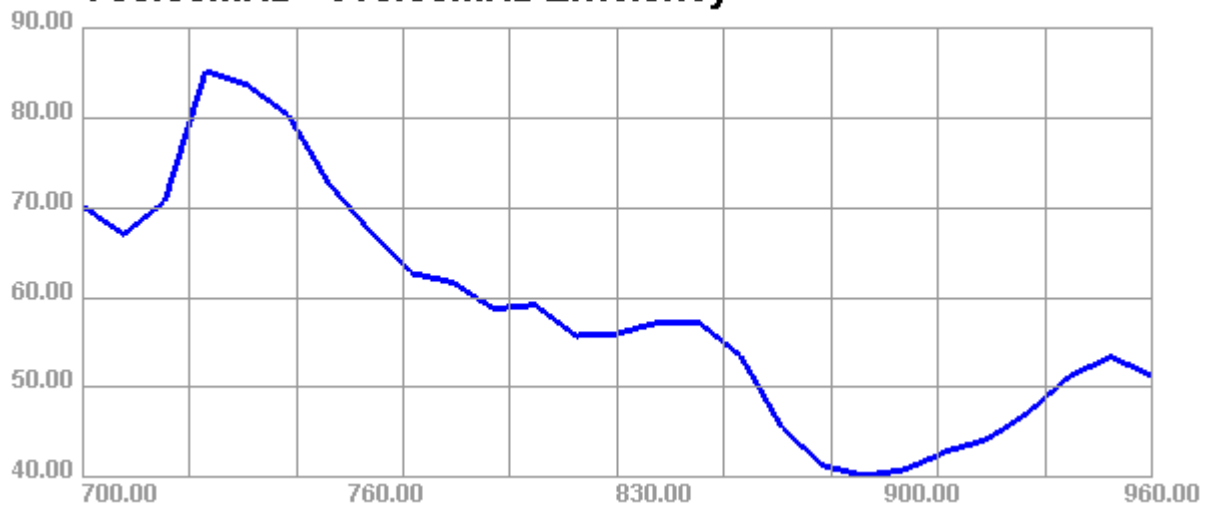
VSWR



Return Loss



700.00MHz - 960.00MHz Efficiency

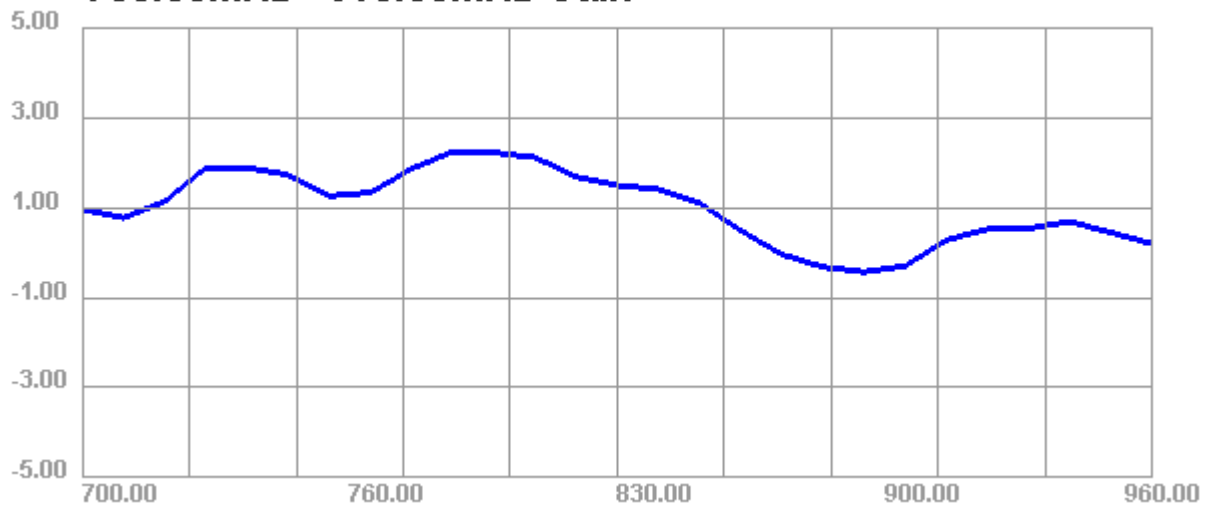


1710.00MHz - 2690.00MHz Efficiency

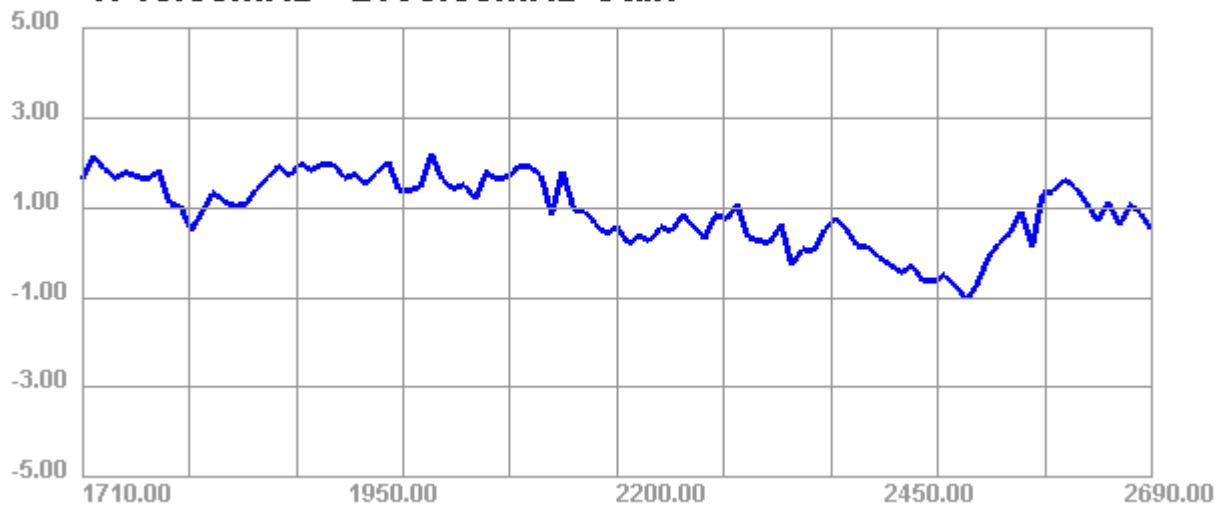




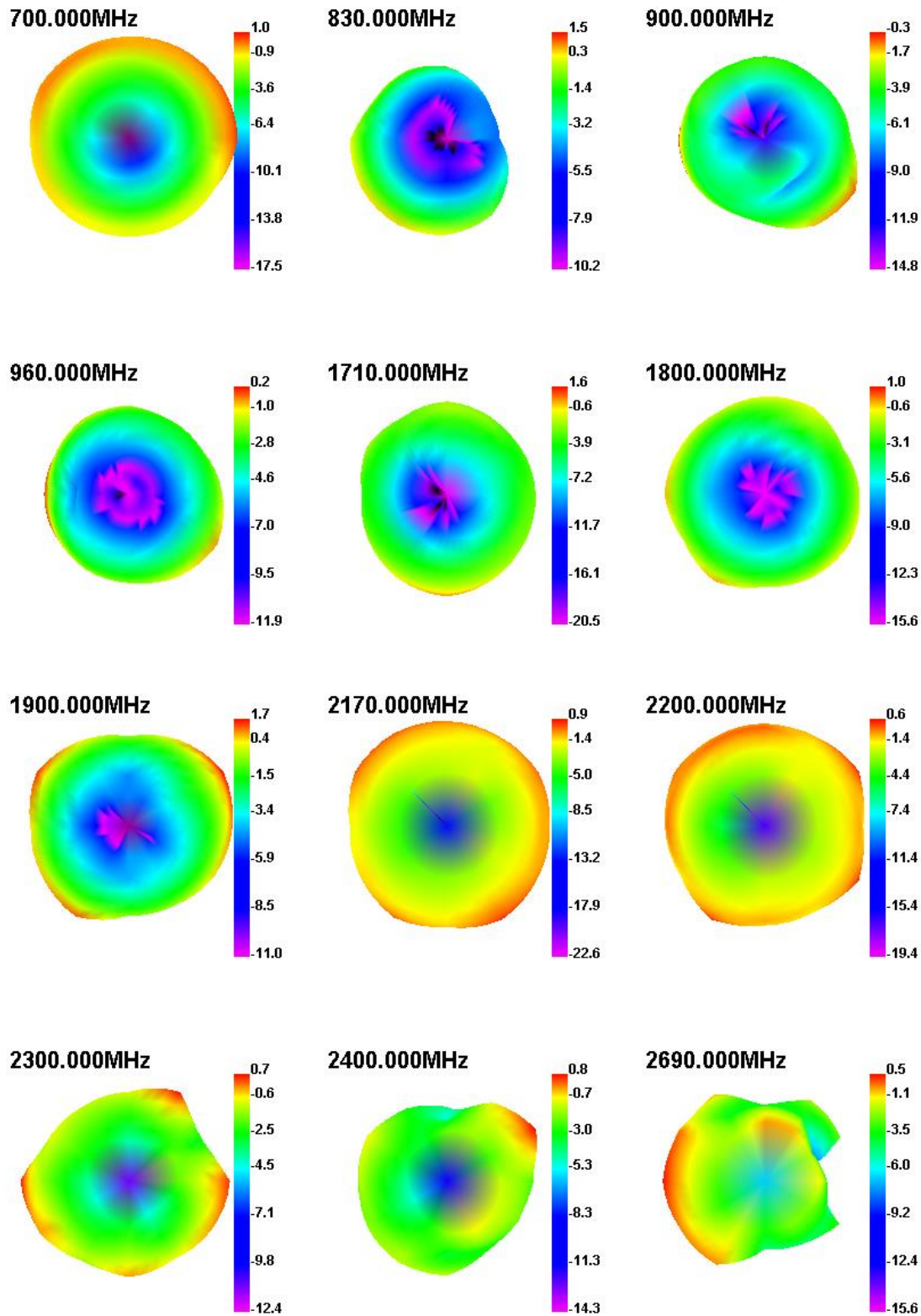
700.00MHz - 960.00MHz Gain



1710.00MHz - 2690.00MHz Gain

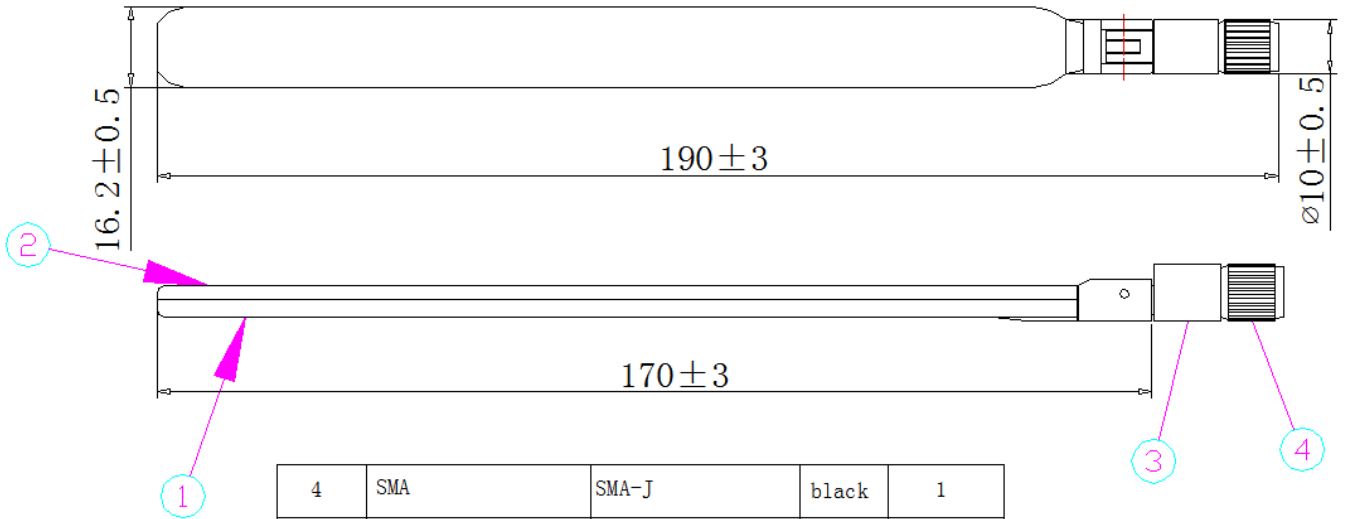


Directional pattern





4. Antenna Drawings



4	SMA	SMA-J	black	1
3	Lower Firmware	ABS	black	1
2	Lower shell	ABS	black	1
1	Upper shell	ABS	black	1
Series	Component name	Specification	Color	Quantity