

ALUMINIUM HOUSING

RB-ALUcase+03B



1. GENERAL INFORMATION

Dear customer,

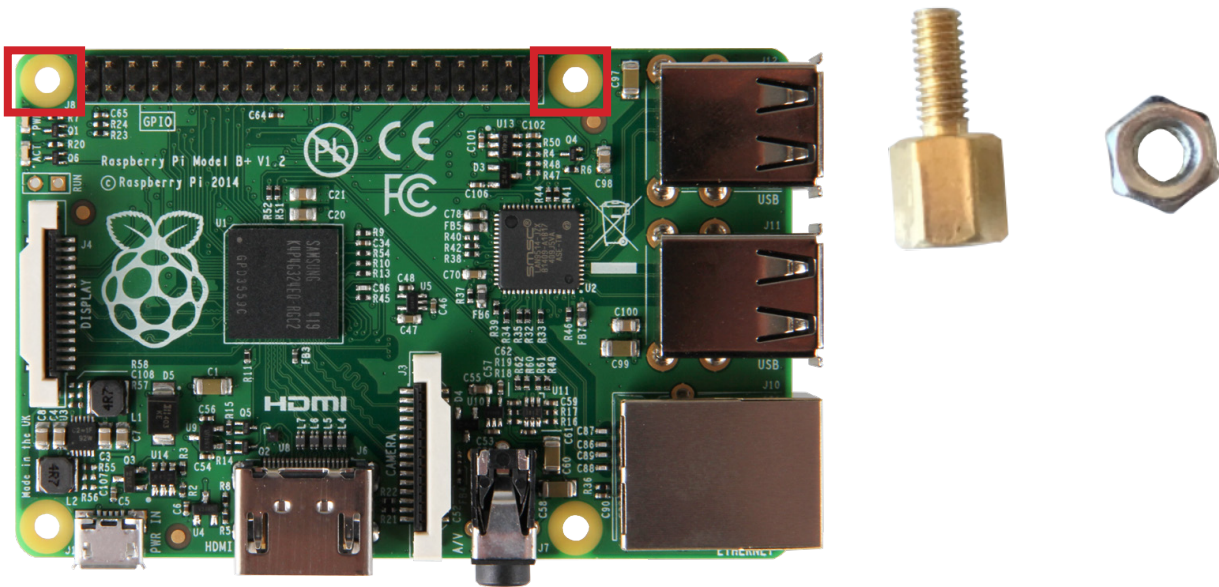
thank you for choosing our product. In the following, we will show you how to use your product.

Should you encounter any unexpected problems during use, please do not hesitate to contact us.

This aluminium housing is a slim, robust workmanship for the Raspberry B+, 2B, 3B, 3B+ and the Banana Pi M2 Berry. Above the GPIO port is a removable flap.

2. ASSEMBLY

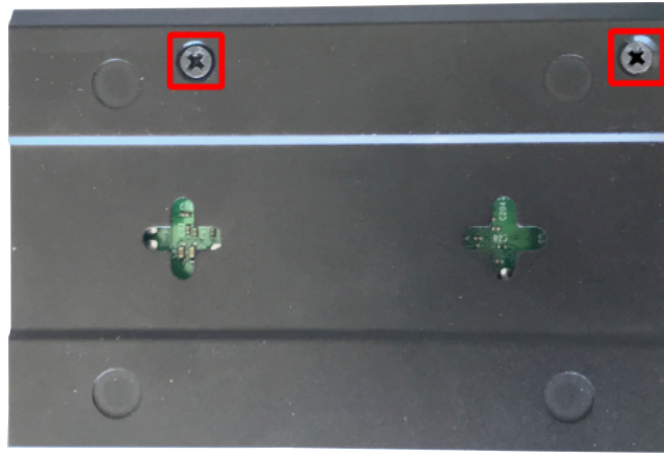
1. Mount both spacers on the Raspberry Pi with the related nuts.



2. Implement the Raspberry Pi in the case.



3. Screw the Raspberry Pi tight on the underside.



4. Screw now the side panels tightly.



3. SUPPORT

If any questions remain open or problems arise after your purchase, we are available by email, telephone and ticket support system to answer these.

E-Mail: service@joy-it.net

Ticket-System: <http://support.joy-it.net>

Telephone: +49 (0)2845 98469 – 66 (10 - 17 o'clock)

For more information visit our website:

www.joy-it.net