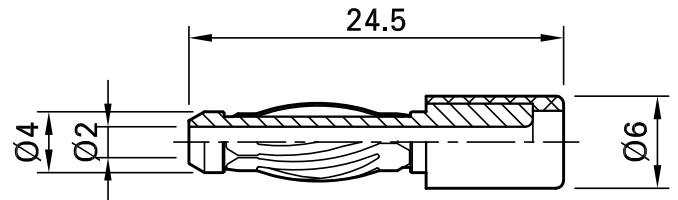
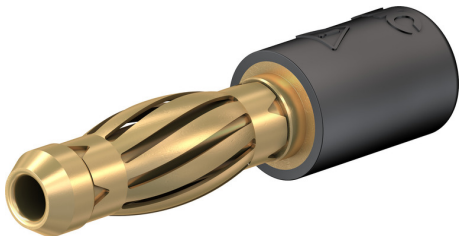


## R4/2-A



Item number 24.0106-\*

Insulated, Ø 4 mm plug, made of brass, with spring-loaded MULTILAM. Ø 2 mm rigid socket in insulator accepting springloaded Ø 2 mm plugs (pluggable on both sides).

Technical data	
Diameter of plug system	4 mm/2 mm
Rated Values	30 VAC, 25 A / 60 VDC, 25 A
Surface treatment electrical contact	Au
Base material electrical contact	CuZn
Colours *	21 22 23 24
Test accessory acc. to	IEC EN 61010-031