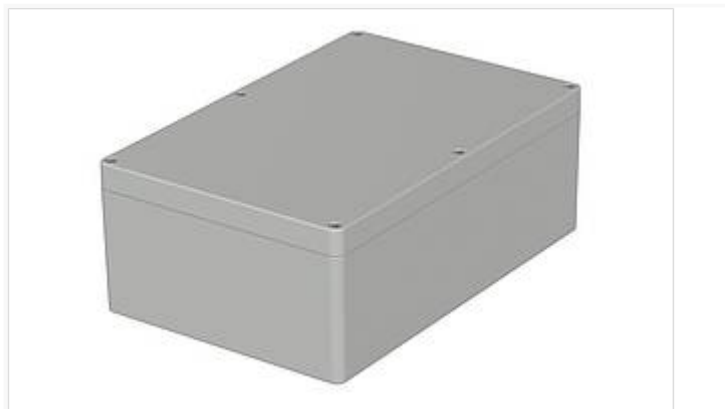


## Euromas ABS / PC / F05

Enclosure, polycarbonate



M 2401

Order no.: 02240200

\* = Available on request.

### Characteristics

Colour of enclosure group

Light grey

Protection class

IP 66

Impact protection

IK 07

Enclosure Material

ABS, PC (UV stabilised) and selected sizes in PC UL 94 V0 (additional UL 94 V0 versions on request), seal made of CR; V215: Vestamid, CR seal; for details see Technical Information

Scope of delivery

Lid and base, lid screws made of V2A, self-tapping screws for mounting bosses

Note

G = Design with crystal-clear lid.

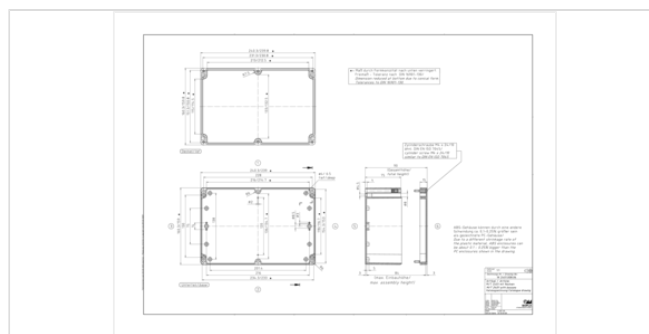
IP = Ingress protection acc. to DIN EN 60529

### Dimensions

Dimensions

240.3 x 160.3 x 90 mm

Product drawing



### Technical documentation / Downloads

Technical drawings

3D product data in STEP format: 02240200 M-2401.stp (763.4 KB)

Drawing for mechanical processing: 02240200 M-401-G.dxf (1.6 MB)

Milling contours are shown here as a DXF file. (Sub D, USB, HDMI, cable glands, ...)

18.10.2022

Product drawing in PDF format: 02240200 M-2401.pdf (107.5 KB)  
Product drawing in DXF format: 02240200 M-2401.dxf (726.9 KB)

## Works Test Certificates

670 WPZ-Euromas-PC DE.pdf (197.3 KB)  
670 WPZ-Euromas-PC EN.pdf (191.1 KB)

## Product information

euromas-abs-pc-f05 en.pdf (1.1 MB)

## Important!

---

To compensate for pressure when temperatures change and cause moisture in the enclosure, we recommend that you use a pressure compensation element.

» Additional information

## Matching accessories

---



### Mast mounting, stainless steel V2A, uncoated

96500167 MH 167  
96500265 MH 265



### Mounting plates, laminated paper, galvanised steel for version 260

22001000 M M 2401/243 For M/T 2401, M/T 243



### Wall brackets on rear, screw-on, polycarbonate

22004900 WL For M/T 210-243, M/T 246-253



### DIN rails DIN EN 60715 TH 15, galvanised steel

22002402 TS 15 For M/T 240-243, M/T 250



### DIN rails DIN EN 60715 G 32, galvanised steel

22002400 TS 32 For M/T 2401, M/T 242-243



### Set of hinges

22006000 SchM



### Threaded inserts for mounting bosses

59002810 DODGE M3x6,5 ND = 4.0 x 6.5  
59002820 DODGE M4x9,5 ND = 5.4 x 9.5



### Rubber feet, plug-in

22003300 F For M/T 208-260



### Knurled screws

22003200 RD For M/T 240-2401



### Screws (SHR) and distance bolts (DIBLZ) for mounting bosses in plastic enclosures

59006101 SHR Z B4,5x7,8 SD = 4.5 / ND = 4.0 / KD = 7.5