

Bocube

Enclosures, ABS, single-coloured



B 141306 ABS 7035

Order no.: 96033225

* = Available on request.

Characteristics

Colour of enclosure group

Light grey, similar to RAL 7035

Colour of enclosure group

Light grey

Protection class

IP 66, 68 - 1,2m (2 hours)

Enclosure Material

ABS or PC UL 94 V0 (material is suitable for outdoor use; f1-listing according to UL 746C)

PU seal, foamed; for details please see Technical Information

Scope of delivery

Lid and base, hinged quick-release catches

Note

Material shrinkage may result in ABS enclosures being approx. 0.1 - 0.25 % larger.

Important!

To compensate for pressure when temperatures change and cause moisture in the enclosure, we recommend that you use a pressure compensation element.

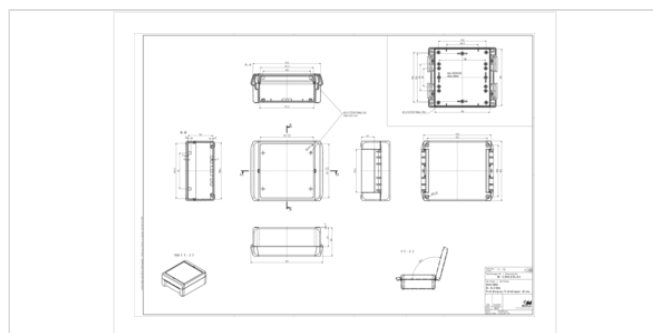
» Additional information

Dimensions

Dimensions

151 x 125 x 60 mm

Product drawing



Technical documentation / Downloads

Technical drawings

3D product data in STEP format: 96033225 B-141306-ABS-7035.stp (8.4 MB)
Drawing for mechanical processing: 96033225 B-141306-ABS-7035-G.dxf (2.9 MB)

Milling contours are shown here as a DXF file. (Sub D, USB, HDMI, cable glands, ...)

Product drawing in PDF format: 96033225 B-141306-ABS-7035.pdf (244.4 KB)

Product drawing in DXF format: 96033225 B-141306-ABS-7035.dxf (3.8 MB)

Product information

Bocube DE.pdf (3.6 MB)
Highlights Bocube.pdf (3.8 MB)

Works Test Certificates

688 WPZ-Bocube-PC-V0 DE.pdf (184.6 KB)

689 WPZ-Bocube-ABS DE.pdf (165.1 KB)

689 WPZ-Bocube-ABS EN.pdf (160.3 KB)

688 WPZ-Bocube-PC-V0 EN.pdf (179.1 KB)

Matching accessories



Hinged quick-release catches (Set), polycarbonate UL 94 V0 or ABS

96330200	B SC 13 ABS 3000	For B 1413.., B 1813.., B 2213..	Flame red
96330202	B SC 13 ABS 5002	For B 1413.., B 1813.., B 2213..	Ultramarine blue
96330209	B SC 13 ABS 6029	For B 1413.., B 1813.., B 2213..	Mint green
96330204	B SC 13 ABS 7024	For B 1413.., B 1813.., B 2213..	Graphite grey
96330205	B SC 13 ABS 7035	For B 1413.., B 1813.., B 2213..	Light grey
96330203	B SC 13 ABS 1023	For B 1413.., B 1813.., B 2213..	Traffic yellow



Hand-operated hinged catch (set), polycarbonate UL 94 V0 or ABS

96930200	B SC HB 13 ABS 3000	For B 1413.., B 1813.., B 2213..	Flame red
96930202	B SC HB 13 ABS 5002	For B 1413.., B 1813.., B 2213..	Ultramarine blue
96930209	B SC HB 13 ABS 6029	For B 1413.., B 1813.., B 2213..	Mint green
96930204*	B SC HB 13 ABS 7024	For B 1413.., B 1813.., B 2213..	Graphite grey
*			
96930203	B SC HB 13 ABS 1023	For B 1413.., B 1813.., B 2213..	Traffic yellow



Wall brackets

96510005	B WL 7035	For B 08... - B 26...	Light grey
96510004	B WL 7024	For B 08... - B 26...	Graphite grey



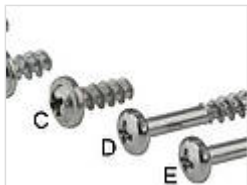
Mounting panels, laminated paper, 2 mm

96603200	B M 1413	For B 1413..
----------	----------	--------------



Front panels, 2 mm, natural-coloured anodised aluminium

96703200	B FP 1413	For B 1413.., front panel thickness 1.5 mm
----------	-----------	--



Sets of screws

96300000	B SHR	D (for optional screwing of enclosures B 0808 - 2617)
96600010	B M-SHR	C (for fixing mounting panels B M 1008-2736)
96700000	B FP-SHR	A (for fixing front panels)



Distance bolts

96726000	DIBLZ AK 30x7/IM3/26	ND = 2.4 - 2.6, for B...06 if a mounting plate is used
96728000	DIBLZ AK 30x5/IM3/28	ND = 2.4 - 2.6, for B...06



Blanking plugs to determine the hinge side

96410000	B VS 3000	Flame red
96410005	B VS 7035	Light grey
96410004	B VS 7024	Graphite grey



DIN rail acc. to DIN EN 60715 TH 15

22151101	TS 15	For EM/ET 213, EM/ET 215-217, EM/ET 227, B 1408., B 1413..
----------	-------	--



DIN rail acc. to DIN EN 60715 G 32

22321101	TS 32	For EM/ET 213, EM/ET 215-217, EM/ET 227, B 1408., B 1413..
----------	-------	--



DIN rail acc. to DIN EN 60715 TH 35

22351101	TS 35	For EM/ET 213, EM/ET 215-217, EM/ET 227, B 1408., B 1413..
----------	-------	--



Pressure compensation membrane DAE

52011000	DAE-D11	Self-adhesive membrane \varnothing 11 mm
----------	---------	--



Screws (SHR) and distance bolts (DIBLZ) for mounting bosses in plastic enclosures

59006217	SHR Z KA30x8	SD = 3,0 / ND = 2,4-2,6 / KD = 6,0
----------	--------------	------------------------------------