

# Alubos

## ABPH 800



ABPH 800-0200  
Order no.: 84086200

\* = Available on request.

### Characteristics

Colour of enclosure group  
Black, similar to RAL 9005

Protection class  
IP 65

Enclosure Material  
Extruded profiles: Al Mg Si 0.5 powder-coated; diecast lid: GB Al Si 12, powder-coated; seal: TPE; for details see Technical Information

Scope of delivery  
Enclosure profile, two parts including profile seal

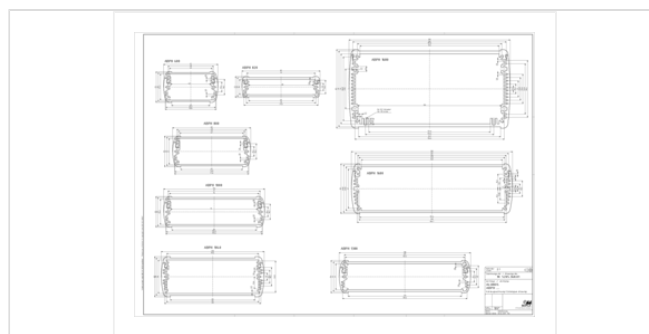
### Note

C = profile length, special lengths on request.

### Dimensions

Dimensions  
82 x 32 x 200 mm

### Product drawing



### Important!

To compensate for pressure when temperatures change and cause moisture in the enclosure, we recommend that you use a pressure compensation element.

» Additional information

## Technical documentation / Downloads

---

### Technical drawings

3D product data in STEP format: 84086200 ABPH-800-0200.stp (388.9 KB)

Drawing for mechanical processing: 84086200 ABPH-800-0200-G.dxf (312.2 KB)

Milling contours are shown here as a DXF file. (Sub D, USB, HDMI, cable glands, ...)

Product drawing in PDF format: 84086200 ABPH-800-0200.pdf (186.5 KB)

Product drawing in DXF format: 84086200 ABPH-800-0200.dxf (1.3 MB)

### Product information

Alubos GB.pdf (2.7 MB)

### Assembly Instructions

Alubos ABPH Profil Geteilt Profile Divided 84200035.pdf (1.4 MB)

## Matching accessories

---



#### End cover

84081000 ABD 800

For AB 800



#### Mounting lid with removable aluminium cap

84082000 ABM 800 AL

For AB 800



#### Mounting lid with hinged aluminium flap

84084000 ABM 800 SAL

For AB 800



#### Mounting lid with removable aluminium cap and compartment for 9V block battery

84082100 ABM 800 AL BE

For AB 800



#### Mounting lid with hinged aluminium flap and compartment for 9V block battery

84084100 ABM 800 SAL-BE

For AB 800



#### Mounting lid with infrared-permissive plastic cap

84083000 ABM 800 IR

For AB 800



Mounting lid with infrared-permissive plastic cap and compartment for 9V block battery

84083100\* ABM 800 IR BE For AB 800



EMC seals

84200815 DI 800-EMV For AB 800



Seals, ultramarine

84200814 DI 800-5002 For AB 800



Seals, fire red

84200811 DI 800-3000 For AB 800



Seals, rape yellow

84200812 DI 800-1021 For AB 800



Seals, patina green

84200813 DI 800-6000 For AB 800



Seals UL 94 V0

84200819\* DI 800-V0 For AB 800



Wall brackets, sheet steel

84005000 AB-WL For AB 600/800/1000/1300



Wall brackets, adjustable, sheet steel

84085000 AB-800 WLV For AB 800/820



### Mounting clamps

84006300 AB-MKL  
84006400 AB 800 MKL

For AB 600/800/1000  
For AB 800



### Rubber feet

84006700 AB - GF

Polyurethane, 65-75 Shore

Black