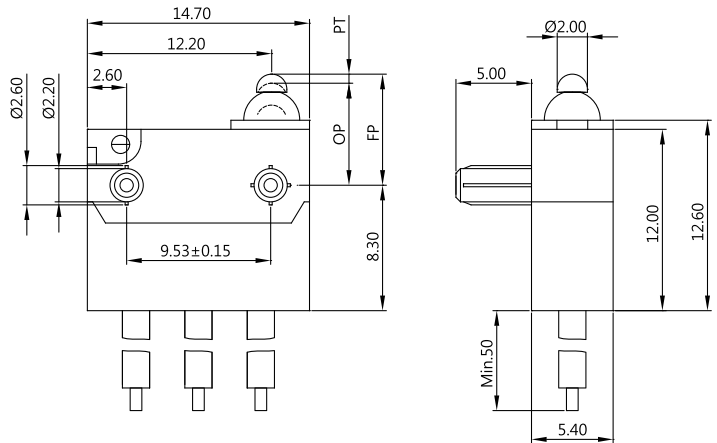


WATER PROOF SWITCHES

DIMENSIONS

Unless otherwise specified, a tolerance of $\pm 0.4\text{mm}$ applies to all dimensions.



DW (IP67)SERIES

APPLICATIONS

Automotive (Seat Belt, Door Latch, Engine Hood, Door Trunk), Air Conditioner, Communication, Security System, Electric Tooth Brush, Toy

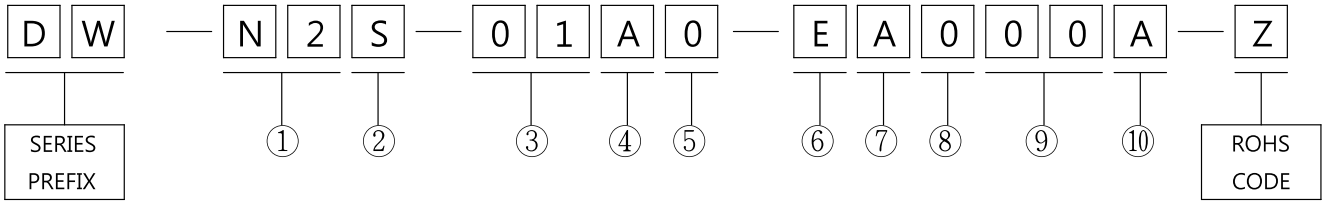
※ For the specification, please refer to DW SERIES. ※

CAUTIONS



Scan the QR code or download
https://www.zippy.com/ecmodelcautions/micro_switch_cautions.pdf

ORDERING INFORMATION



①	RATING	
	N2	10mA 12VDC (Contact Plated Gold)
	N3	3A 12VDC

②	OPERATING FORCE	
	S	Standard

③	ACTUATOR TYPE		
	00	01	A01

④	PILLAR TYPE								
	D	E	F	H	J	*L	*N	*Q	*S

⑤	CIRCUIT ARRANGEMENT	
	0	S.P.D.T
	1	S.P.S.T NO
	2	S.P.S.T NC

⑥	AWG TYPE		
	E	F	G
	20	22	24

⑦	UL NUMBER		
	A	C	D
	UL 1007	UL 1430	UL 1061

⑧	WIRE LEADS		
	0	R	L

⑨	SERIAL CODE
---	-------------

⑩	DIMENSIONS							
	CODE	L1	H	ØA	ØB	ØC	ØD	P
		5.0	3.7	2.2	2.6	2.2	2.6	9.53
	A	2.0	3.7	2.2	2.6	2.2	2.6	9.53
	*B	3.5	3.7	2.2	2.6	2.2	2.6	9.53
	*C	2.8	3.75	2.7	3.1 (THREE RIBS)	2.2	2.6	9.53
	D	4.0	3.7	2.2	2.6	2.2	2.6	9.53
	E	0.9	3.7	2.2	N/A	2.2	N/A	9.53
	F	1.8	3.7	2.5	N/A	2.5	N/A	9.53
	*G	5.0	3.7	2.4	2.8	2.4	2.8	8.0
	*I	2.8	3.7	2.2	2.6	2.2	2.6	9.53