



SUNNYWAY

SUNNYWAY

CATALOGUE

IoT Antenna Supplier

PCB Antenna
FPC Antenna
SMD Antenna
GNSS Antenna
Spring Antenna
External Antenna
Combination Antenna

www.sunny-way.com

Table of Contents

PCB Antenna

SWP001-	04
SWP002-	04
SWP003-	04
SWP004-	05
SWP005-	05
SWP007-	05

FPC Antenna

SWF001-	06
SWF002-	06
SWF003-	06
SWF004-	07
SWF005-	07
SWF006-	07

SMD Antenna

SWP006-	08
SWD002-	08
SWD006-	08
SWD008-	09
SWD012-	09
SGNSS-	09
SWD013-	10

GNSS Antenna

SWG001-	11
SWG002-	11
SWG003-	11
SWG004-	12
SWG005-	12
SWG006-	12
SWG007-	13
SWG008-	13
SWG009-	13
SWG010-	14
SWG011-	14
SWG012-	14
SWG013-	15
SWG014-	15
SWG015-	15

Spring Antenna

SWS001-	16
SWS003-	16
SWS004-	16

Table of Contents

External Antenna

SWE001	17
SWE002	17
SWE003	17
SWE004	18
SWE005	18
SWE006	18
SWE007	19
SWE008	19
SWE009	19
SWE010	20
SWE011	20
SWE012	20
SWE013	21
SWE014	21
SWE015	21
SWE016	22
SWE017	22
SWE018	22
SWE019	23
SWE020	23
SWE021	23
SWE022	24
SWE023	24
SWE024	24
SWE025	25
SWE026	25
SWE027	25
SWE028	26
SWE029	26
SWE030	26
SWE032	27
SWE033	27

Combination Antenna

SWB001	28
SWB001LD	29
SWB003	30
SWB004	31
SWB005	32

PCB Antenna

SWP001

PN: SW19001IG97



General specification

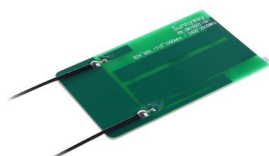
Mounting type	Adhesive
Connector type	U.FL Standard
Dimensions (mm)	112.5*16.2*0.8
Operating temperature	-40 °C to +85 °C

Antenna and electrical specifications

Standards	5G/4G/3G/2G/WiFi/BT
Frequency (MHz)	600-6000
VSWR	~2
Peak Gain (dBi)	0~2
Impedance (Ohm)	50
Polarisation	Linear
Max. Input Power (W)	25

SWP002

PN: SW19002IG97



General specification

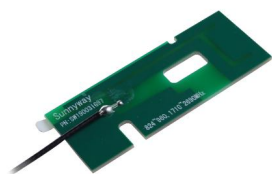
Mounting type	Adhesive
Connector type	U.FL Standard
Dimensions (mm)	54.5*34.7*1.0
Operating temperature	-40 °C to +85 °C

Antenna and electrical specifications

Standards	3G/2G/WiFi
Frequency (MHz)	824-960, 1710-1990, 2400-2500
VSWR	~3
Peak Gain (dBi)	0~2
Impedance (Ohm)	50
Polarisation	Linear
Max. Input Power (W)	25

SWP003

PN: SW19003IG97



General specification

Mounting type	Adhesive
Connector type	U.FL Standard
Dimensions (mm)	43.36x17.0x1.0
Operating temperature	-40 °C to +85 °C

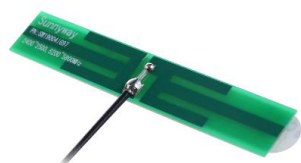
Antenna and electrical specifications

Standards	4G/3G/2G
Frequency (MHz)	824~960, 1710~2690
VSWR	~2-7
Peak Gain (dBi)	-1~2
Impedance (Ohm)	50
Polarisation	Linear
Max. Input Power (W)	25

PCB Antenna

SWP004

PN: SW19004IG97



General specification

Mounting type	Adhesive
Connector type	U.FL Standard
Dimensions (mm)	50.7*9.0*0.6
Operating temperature	-40 °C to +85 °C

Antenna and electrical specifications

Standards	WiFi 2.4G & 5.8G
Frequency (MHz)	2400~2500,5200~5800
VSWR	~1.5
Peak Gain (dBi)	2~3
Impedance (Ohm)	50
Polarisation	Linear
Max. Input Power (W)	25

SWP005

PN: SW19005IG97



General specification

Mounting type	Adhesive
Connector type	U.FL Standard
Dimensions (mm)	47.0mm x 5.0mm x1.2
Operating temperature	-40 °C to +85 °C

Antenna and electrical specifications

Standards	3G/2G
Frequency (MHz)	824~960,1710~1990
VSWR	~2-5
Peak Gain (dBi)	0~2
Impedance (Ohm)	50
Polarisation	Linear
Max. Input Power (W)	25

SWP007

PN: SW19054IB97



General specification

Mounting type	Adhesive
Connector type	I-PEX
Dimensions (mm)	35.8*6.85*0.8
Operating temperature	-40 °C to +85 °C

Antenna and electrical specifications

Standards	3G/2G
Frequency (MHz)	800~2100MHz
VSWR	~4
Peak Gain (dBi)	-3~2dBi
Impedance (Ohm)	50
Polarisation	Linear
Max. Input Power (W)	25

FPC Antenna

SWF001

PN: SW19006IB77



General specification

Mounting type	Adhesive
Connector type	U.FL Standard
Dimensions (mm)	62.0*19.0*0.12
Operating temperature	-40 °C to +85 °C

Antenna and electrical specifications

Standards	4G/3G/2G
Frequency (MHz)	824~960,1710~2690
VSWR	~2-4
Peak Gain (dBi)	0~4
Impedance (Ohm)	50
Polarisation	Linear
Max. Input Power (W)	25

SWF002

PN: SW19007IB77



General specification

Mounting type	Adhesive
Connector type	U.FL Standard
Dimensions (mm)	87.17x 20.0x0.12
Operating temperature	-40 °C to +85 °C

Antenna and electrical specifications

Standards	4G/3G/2G
Frequency (MHz)	824~960,1710~2690
VSWR	~2-4
Peak Gain (dBi)	0~3
Impedance (Ohm)	50
Polarisation	Linear
Max. Input Power (W)	25

SWF003

PN: SW19008IB77



General specification

Mounting type	Adhesive
Connector type	U.FL Standard
Dimensions (mm)	112.5*16.2*0.12
Operating temperature	-40 °C to +85 °C

Antenna and electrical specifications

Standards	5G/4G/3G/2G
Frequency (MHz)	700-6000
VSWR	~2
Peak Gain (dBi)	0~4
Impedance (Ohm)	50
Polarisation	Linear
Max. Input Power (W)	25

FPC Antenna

SWF004

PN: SW19010IB77



General specification

Mounting type	Adhesive
Connector type	U.FL Standard
Dimensions (mm)	45.4*15.6*0.12
Operating temperature	-40 °C to +85 °C

Antenna and electrical specifications

Standards	LoRa
Frequency (MHz)	470-510MHz
VSWR	<5
Peak Gain (dBi)	-3-0
Impedance (Ohm)	50
Polarisation	Linear
Max. Input Power (W)	25

SWF005

PN: SW19013IB77



General specification

Mounting type	Adhesive
Connector type	U.FL Standard
Dimensions (mm)	39.0*6.5*0.12
Operating temperature	-40 °C to +85 °C

Antenna and electrical specifications

Standards	GPS/Glonass/Galileo/BeiDou L1+L5
Frequency (MHz)	1176/1227/1575/1602
VSWR	<2
Peak Gain (dBi)	0~2
Impedance (Ohm)	50
Polarisation	Linear
Max. Input Power (W)	25

SWF006

PN: SW20030IB77



General specification

Mounting type	Adhesive
Connector type	U.FL Standard
Dimensions (mm)	50.7mm (L) x9mm (W) x0.12mm (H)
Operating temperature	-40 °C to +80 °C

Antenna and electrical specifications

Standards	WiFi 2.4G + 5.8G
Frequency (MHz)	2400~2500MHz, 5100~5900MHz
VSWR	<2, <4
Peak Gain (dBi)	0.5~2.0dBi, 1.5~4.0dBi
Impedance (Ohm)	50
Polarisation	Linear
Max. Input Power (W)	25

SMD Antenna

SWP006

PN: SW19009IB66



General specification

Mounting type	SMD
Connector type	/
Dimensions (mm)	30.0 (L) x 3.0 (W) x 1.0 (H)
Operating temperature	- 40 °C ~ + 85 °C

Antenna and electrical specifications

Standards	4G/3G/2G
Frequency (MHz)	700-960MHz, 1710-2690MHz
VSWR	<3.7, <2.1
Peak Gain (dBi)	-3-1.5dB, 0.41-4.1dB
Impedance (Ohm)	50
Polarisation	Linear
Max. Input Power (W)	25

SWD002

PN: SW20008IB66



General specification

Mounting type	SMD
Connector type	/
Dimensions (mm)	35.0 (L) x 8.5 (W) x 3.0 (H)
Operating temperature	- 40 °C ~ + 85 °C

Antenna and electrical specifications

Standards	4G/3G/2G
Frequency (MHz)	698-960MHz, 1710-2690MHz
VSWR	<4, <2.5
Peak Gain (dBi)	-1.58~2.43dBi, -0.28~3.54dBi
Impedance (Ohm)	50
Polarisation	Linear
Max. Input Power (W)	25

SWD006

PN:SW20012IB66



General specification

Mounting type	SMD
Connector type	/
Dimensions (mm)	7.0(L) x5.8 (W) x 0.4(H)
Operating temperature	- 40 °C ~ + 85 °C

Antenna and electrical specifications

Standards	GPS&GLONASS&GALILEO&BEI DOU
Frequency (MHz)	1559-1609MHz
VSWR	<1.5
Peak Gain (dBi)	2.7~4.5dBi
Impedance (Ohm)	50
Polarisation	Linear
Max. Input Power (W)	25

SMD Antenna

SWD008

PN: SW20014IB66-L
PN: SW20014IB66-R



General specification

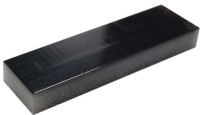
Mounting type	SMD
Connector type	/
Dimensions (mm)	20.0mm(L)X11.0mm(W)X1.6mm(H)
Operating temperature	- 40 °C ~ + 85 °C

Antenna and electrical specifications

Standards	NB2-B20,NB2-B5/B8
Frequency (MHz)	791~862MHz,824~960MHz
VSWR	<2.3,<1.5
Peak Gain (dBi)	1.2~3.2 dBi, 1.3~2.2 dBi
Impedance (Ohm)	50
Polarisation	Linear
Max. Input Power (W)	25

SWD012

PN: SW20018IB66



General specification

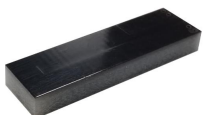
Mounting type	SMT
Connector type	/
Dimensions (mm)	26.0 (L) x 7.65 (W) x 3.0 (H)
Operating temperature	- 40 °C ~ + 85 °C

Antenna and electrical specifications

Standards	3G/2G
Frequency (MHz)	824-960MHz, 1710-2170MHz
VSWR	< 3.6, <2.5
Peak Gain (dBi)	-0.88~1.98dBi, 1.15~3.92dBi
Impedance (Ohm)	50
Polarisation	Linear
Max. Input Power (W)	25

SGNSS

PN: SW20005IB66



General specification

Mounting type	SMD
Connector type	/
Dimensions (mm)	26.0 (L) x 7.65 (W) x 3.0 (H)
Operating temperature	- 40 °C ~ + 85 °C

Antenna and electrical specifications

Standards	GPS L1+L5 & Glonass,Galileo/BeiDou
Frequency (MHz)	1176 MHz, 1575.42MHz, 1602 MHz
VSWR	1.29,1.19,1.18
Peak Gain (dBi)	2.67 dBi, 2.54 dBi, 2.79 dBi
Impedance (Ohm)	50
Polarisation	Linear
Max. Input Power (W)	25

SMD Antenna

SWD013

PN: SW20034IB66



General specification

Mounting type	SMD
Connector type	/
Dimensions (mm)	35.0 (L) x 8.5 (W) x 3.0 (H)
Operating temperature	- 40 °C ~ + 85 °C

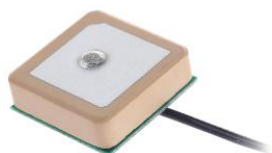
Antenna and electrical specifications

Standards	4G&3G&2G&GPS&GLONASS&ALILEO&BEIDOU
Frequency (MHz)	698~960MHz, 1559MHz, 1575.42MHz, 1602MHz, 1710~2690MHz
VSWR	<5.0, 2.95, 2.86, 2.68, <3.0
Peak Gain (dBi)	-2.8~2.5dBi, 2.8dBi, 2.8dBi, 3.8dBi, 0~3.5dBi
Impedance (Ohm)	50
Polarisation	Linear
Max. Input Power (W)	25

GNSS Antenna

SWG001

PN: SW19017IB93



General specification

Mounting type	Adhesive
Connector type	U.FL Standard
Dimensions (mm)	15mm (L) x15 mm (W) x 6.9mm (H)
Operating temperature	-40 °C ~ +85 °C

Antenna and electrical specifications

Standards	GPS/Glonass/Galileo/BeiDou
Frequency (MHz)	1575~1602MHz
VSWR	~2
Peak Gain (dBi)	2.5dBi
Impedance (Ohm)	50
Polarisation	Circular polarization
Max. Input Power (W)	25

SWG002

PN: SW19018IB93



General specification

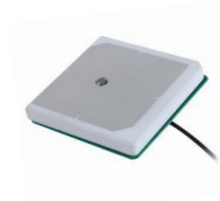
Mounting type	Adhesive
Connector type	U.FL Standard
Dimensions (mm)	18mm (L) x18 mm (W) x 6.7mm (H)
Operating temperature	-40 °C ~ +85 °C

Antenna and electrical specifications

Standards	GPS/GLONASS/GALILEO/BEIDOU
Frequency (MHz)	1559~1575~1602mhz
VSWR	~2
Peak Gain (dBi)	3dBi
Impedance (Ohm)	50
Polarisation	Linear
Max. Input Power (W)	25

SWG003

PN: SW19019IB93



General specification

Mounting type	Adhesive
Connector type	U.FL Standard
Dimensions (mm)	25mm (L) x25 mm (W) x 5.1mm (H)
Operating temperature	-40 °C ~ +85 °C

Antenna and electrical specifications

Standards	GPS/GLONASS/GALILEO/BEIDOU
Frequency (MHz)	1559~1575~1602mhz
VSWR	~2
Peak Gain (dBi)	3dBi
Impedance (Ohm)	50
Polarisation	Linear
Max. Input Power (W)	25

GNSS Antenna

SWG004

PN: SW19020IB93



General specification

Mounting type	Adhesive
Connector type	U.FL Standard
Dimensions (mm)	25mm (L) x 25 mm (W) x 6.5mm (H)
Operating temperature	-40 °C ~ +85 °C

Antenna and electrical specifications

Standards	GPS/GLONASS/GALILEO/BEID OU
Frequency (MHz)	1559~1575~1602mhz
VSWR	~2
Peak Gain (dBi)	3dBi
Impedance (Ohm)	50
Polarisation	Linear
Max. Input Power (W)	25

SWG005

PN: SW19021IB93



General specification

Mounting type	Adhesive
Connector type	U.FL Standard
Dimensions (mm)	35mm (L) x 35 mm (W) x 7.1mm (H)
Operating temperature	-40 °C ~ +85 °C

Antenna and electrical specifications

Standards	GPS/GLONASS/GALILEO/BEID OU
Frequency (MHz)	1559~1575~1602mhz
VSWR	~2
Peak Gain (dBi)	3dBi
Impedance (Ohm)	50
Polarisation	Linear
Max. Input Power (W)	25

SWG006

PN:SW19029IB93



General specification

Mounting type	Adhesive
Connector type	U.FL Standard
Dimensions (mm)	25mm (L) x 25 mm (W) x 6.5mm (H)
Operating temperature	-40 °C ~ +85 °C

Antenna and electrical specifications

Standards	GPS/GLONASS/GALILEO/BEID OU
Frequency (MHz)	1559~1575~1602mhz
VSWR	~2
Peak Gain (dBi)	3dBi
Impedance (Ohm)	50
Polarisation	Linear
Max. Input Power (W)	25

GNSS Antenna

SWG007

PN: SW19055EB93



General specification

Mounting type	Magnet
Connector type	SMA
Dimensions (mm)	38.3mm (L) x 45.54 mm (W) x 13.0mm (H)
Operating temperature	-40 °C ~ +85 °C

Antenna and electrical specifications

Standards	GPS/Glonass/Galileo L1+L5
Frequency (MHz)	1176/1575/1602MHz
VSWR	~1.7
Peak Gain (dBi)	0~2dBi
Impedance (Ohm)	50
Polarisation	Linear
Max. Input Power (W)	25

SWG008

PN: SW19056IB93



General specification

Mounting type	Adhesive
Connector type	Welding
Dimensions (mm)	18mm (L) x 18 mm (W) x 4mm (H) 15mm (L) x 15 mm (W) x 2mm (H)
Operating temperature	-40 °C ~ +85 °C

Antenna and electrical specifications

Standards	GPS/Glonass/Galileo L1+L5
Frequency (MHz)	1176/1575/1602MHz
VSWR	~1.8
Peak Gain (dBi)	0~1.4dBi
Impedance (Ohm)	50
Polarisation	Linear
Max. Input Power (W)	25

SWG009

PN: SW19057IB93



General specification

Mounting type	Adhesive
Connector type	Welding
Dimensions (mm)	10mm (L) x 10 mm (W) x 4mm (H)
Operating temperature	-40 °C ~ +85 °C

Antenna and electrical specifications

Standards	GPS/GLONASS/GALILEO
Frequency (MHz)	1575~1602mhz
VSWR	~1.4
Peak Gain (dBi)	-4.7~-2.4dBi
Impedance (Ohm)	50
Polarisation	Linear
Max. Input Power (W)	25

GNSS Antenna

SWG010

PN: SW19062EB93



General specification

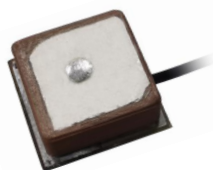
Mounting type	Magnet+Back Glue
Connector type	FAKRA
Dimensions (mm)	38.3mm (L) x45.54 mm (W) x 13.0mm (H)
Operating temperature	-40 °C ~ +85 °C

Antenna and electrical specifications

Standards	GPS/GLONASS/GALILEO/BEIDOU
Frequency (MHz)	1559~1575~1602MHz
VSWR	~2
Peak Gain (dBi)	3dBi
Impedance (Ohm)	50
Polarisation	Circular polarization
Max. Input Power (W)	25

SWG011

PN: SW19075IB93



General specification

Mounting type	Adhesive
Connector type	U.FL Standard
Dimensions (mm)	12mm (L) x12 mm (W) x 4.4mm (H)
Operating temperature	-40 °C ~ +85 °C

Antenna and electrical specifications

Standards	GPS/GLONASS
Frequency (MHz)	1575/1609Mhz
VSWR	~1.3/1.3
Peak Gain (dBi)	2.5dBi
Impedance (Ohm)	50
Polarisation	Circular polarization
Max. Input Power (W)	25

SWG012

PN: SW20001IB93



General specification

Mounting type	Adhesive
Connector type	U.FL Standard
Dimensions (mm)	25 x25 +18x18x10.9mm (H)
Operating temperature	-40 °C ~ +85 °C

Antenna and electrical specifications

Standards	GPS L1+L5 & Galileo E2 & BeiDou B1
Frequency (MHz)	1176/1561/1575MHz
VSWR	~1.5
Peak Gain (dBi)	1~2.5dBi
Impedance (Ohm)	50
Polarisation	Circular polarization
Max. Input Power (W)	25

GNSS Antenna

SWG013

PN: SW200201B93



General specification

Mounting type	SMD + Adhesive
Connector type	Welding
Dimensions (mm)	25mm (L) x25 mm (W) x 4mm (H) 18mm (L) x18 mm (W) x 2mm (H)
Operating temperature	-40 °C ~ +85 °C

Antenna and electrical specifications

Standards	L1+L5 GNSS
Frequency (MHz)	1176.45/1575.42MHz
VSWR	1.75, 1.47
Peak Gain (dBi)	2.13dBi, -0.23dBi
Impedance (Ohm)	50
Polarisation	Circular polarization
Max. Input Power (W)	25

SWG014

PN: SW200241B93



General specification

Mounting type	Adhesive
Connector type	Welding
Dimensions (mm)	18mm (L) x18 mm (W) x 4mm (H)
Operating temperature	-40 °C ~ +85 °C

Antenna and electrical specifications

Standards	GPS/GLONASS/GALILEO/BEIDOU
Frequency (MHz)	1559~1575~1602Mhz
VSWR	~2
Peak Gain (dBi)	3dBi
Impedance (Ohm)	50
Polarisation	Circular polarization
Max. Input Power (W)	25

SWG015

PN: SW200291B93



General specification

Mounting type	Adhesive
Connector type	Welding
Dimensions (mm)	20mm (L) x20 mm (W) x 4mm (H)
Operating temperature	-40 °C ~ +85 °C

Antenna and electrical specifications

Standards	GPS/GLONASS/GALILEO/BEIDOU
Frequency (MHz)	1559 MHz, 1575 MHz, 1602 MHz
VSWR	3.12, 2.90, 1.88
Peak Gain (dBi)	-1.11dBi, 0.14 dBi, -0.28 dBi
Impedance (Ohm)	50
Polarisation	Circular polarization
Max. Input Power (W)	25

Spring Antenna

SWS001

PN:SW19011IA67



General specification

Mounting type	Welding
Connector type	/
Dimensions (mm)	$\phi 5.7 \times 34.01$ (H)
Operating temperature	-40 °C ~ +85 °C

Antenna and electrical specifications

Standards	LoRa
Frequency (MHz)	470~510MHz
VSWR	<3.0
Peak Gain (dBi)	0~2dBi
Impedance (Ohm)	50
Polarisation	Linear
Max. Input Power (W)	25

SWS003

PN: SW19030IA67



General specification

Mounting type	Welding
Connector type	/
Dimensions (mm)	$\phi 5.8 \times 29.19$ (H)
Operating temperature	-40 °C ~ +85 °C

Antenna and electrical specifications

Standards	LoRa
Frequency (MHz)	868MHz
VSWR	1.18
Peak Gain (dBi)	2dBi
Impedance (Ohm)	50
Polarisation	Linear
Max. Input Power (W)	25

SWS004

PN: SW20022IA67



General specification

Mounting type	Welding
Connector type	/
Dimensions (mm)	$\phi 5.8 \times 27.78$ (H)
Operating temperature	-40 °C ~ +85 °C

Antenna and electrical specifications

Standards	NB-IoT, B8
Frequency (MHz)	880 MHz – 960 MHz
VSWR	< 2
Peak Gain (dBi)	0.8dBi~3.5dBi
Impedance (Ohm)	50
Polarisation	Linear
Max. Input Power (W)	25

External Antenna

SWE001

PN: SWE001EB78



General specification

Mounting type	Connector Mount
Connector type	SMA (1M)
Dimensions (mm)	308 x ϕ 30
Operating temperature	-40 °C ~ +85 °C

Antenna and electrical specifications

Standards	3G/2G
Frequency (MHz)	824~960,1710~2170MHz
VSWR	~2
Peak Gain (dBi)	-4~-0.5dBi
Impedance (Ohm)	50
Polarisation	Linear
Max. Input Power (W)	25

SWE002

PN: SW19032EB78



General specification

Mounting type	Connector Mount
Connector type	SMA (2M)
Dimensions (mm)	ϕ 46.5mm*185mm
Operating temperature	-40 °C ~ +85 °C

Antenna and electrical specifications

Standards	4G/3G/2G
Frequency (MHz)	824~960,1710~2690MHz
VSWR	~2.4
Peak Gain (dBi)	-2~2dBi
Impedance (Ohm)	50
Polarisation	Linear
Max. Input Power (W)	25

SWE003

PN: SW19033EB78



General specification

Mounting type	Connector Mount
Connector type	SMA (3M)
Dimensions (mm)	128mm* ϕ 30mm
Operating temperature	-40 °C ~ +85 °C

Antenna and electrical specifications

Standards	LoRa
Frequency (MHz)	470~510MHz
VSWR	~2.0
Peak Gain (dBi)	-1.5~-0.5dBi
Impedance (Ohm)	50
Polarisation	Linear
Max. Input Power (W)	25

External Antenna

SWE004

PN: SW19034EB56



General specification

Mounting type	Connector Mount
Connector type	SMA
Dimensions (mm)	109mm*φ10mm
Operating temperature	-40 °C ~ +85 °C

Antenna and electrical specifications

Standards	ISM-433MHz
Frequency (MHz)	433mhz
VSWR	1.28
Peak Gain (dBi)	-1.3dBi
Impedance (Ohm)	50
Polarisation	Linear
Max. Input Power (W)	25

SWE005

PN: SW19035EB56



General specification

Mounting type	Connector Mount
Connector type	SMA
Dimensions (mm)	109mm*φ10mm
Operating temperature	-40 °C ~ +85 °C

Antenna and electrical specifications

Standards	LoRa
Frequency (MHz)	470-510mhz
VSWR	<3
Peak Gain (dBi)	-1~1.5dBi
Impedance (Ohm)	50
Polarisation	Linear
Max. Input Power (W)	25

SWE006

PN: SW19036EB56



General specification

Mounting type	Connector Mount
Connector type	SMA
Dimensions (mm)	109mm*φ10mm
Operating temperature	-40 °C ~ +85 °C

Antenna and electrical specifications

Standards	ISM-868MHz
Frequency (MHz)	868MHz
VSWR	1.17
Peak Gain (dBi)	1.51dBi
Impedance (Ohm)	50
Polarisation	Linear
Max. Input Power (W)	25

External Antenna

SWE007

PN: SW19037EB56



General specification

Mounting type	Connector Mount
Connector type	SMA
Dimensions (mm)	109mm*φ10mm
Operating temperature	-40 °C ~ +85 °C

Antenna and electrical specifications

Standards	ISM-915MHz
Frequency (MHz)	915MHz
VSWR	1.77
Peak Gain (dBi)	0.97dBi
Impedance (Ohm)	50
Polarisation	Linear
Max. Input Power (W)	25

SWE008

PN: SW19038EB56



General specification

Mounting type	Connector Mount
Connector type	SMA
Dimensions (mm)	109mm*φ10mm
Operating temperature	-40 °C ~ +85 °C

Antenna and electrical specifications

Standards	WiFi/BT
Frequency (MHz)	2400-2500MHz
VSWR	<2
Peak Gain (dBi)	3~4.5dBi
Impedance (Ohm)	50
Polarisation	Linear
Max. Input Power (W)	25

SWE009

PN: SW19039EB56



General specification

Mounting type	Connector Mount
Connector type	SMA
Dimensions (mm)	109mm*φ10mm
Operating temperature	-40 °C ~ +85 °C

Antenna and electrical specifications

Standards	5G
Frequency (MHz)	3300-5000MHz
VSWR	<4
Peak Gain (dBi)	-1~4.5dBi
Impedance (Ohm)	50
Polarisation	Linear
Max. Input Power (W)	25

External Antenna

SWE010

PN: SW19040EB56



General specification

Mounting type	Connector Mount
Connector type	SMA
Dimensions (mm)	190mm*16.2mm
Operating temperature	-40 °C ~ +85 °C

Antenna and electrical specifications

Standards	4G/3G/2G
Frequency (MHz)	700~960,1710~2690MHz
VSWR	~2-3
Peak Gain (dBi)	0~2dBi
Impedance (Ohm)	50
Polarisation	Linear
Max. Input Power (W)	25

SWE011

PN: SW19041EB78



General specification

Mounting type	Connector Mount
Connector type	SMA (3M)
Dimensions (mm)	154mm*φ30mm
Operating temperature	-40 °C ~ +85 °C

Antenna and electrical specifications

Standards	ISM-433MHz
Frequency (MHz)	433MHz
VSWR	1.44
Peak Gain (dBi)	0.23dBi
Impedance (Ohm)	50
Polarisation	Linear
Max. Input Power (W)	25

SWE012

PN: SW19042EB78



General specification

Mounting type	Connector Mount
Connector type	SMA (1M)
Dimensions (mm)	223Xφ30
Operating temperature	-40 °C ~ +85 °C

Antenna and electrical specifications

Standards	WiFi/BT
Frequency (MHz)	2400~2500mhz
VSWR	~1.7~4
Peak Gain (dBi)	~0~1.5dBi
Impedance (Ohm)	50
Polarisation	Linear
Max. Input Power (W)	25

External Antenna

SWE013

PN: SW19043EB56



General specification

Mounting type	Connector Mount
Connector type	SMA (3M)
Dimensions (mm)	116.0*22.0*5.3mm
Operating temperature	-40 °C ~ +85 °C

Antenna and electrical specifications

Standards	4G/3G/2G
Frequency (MHz)	824~960,1710~2690MHz
VSWR	~2
Peak Gain (dBi)	-3~0dBi
Impedance (Ohm)	50
Polarisation	Linear
Max. Input Power (W)	25

SWE014

PN: SW19044EB56



General specification

Mounting type	Connector Mount
Connector type	SMA
Dimensions (mm)	195xφ13mm
Operating temperature	-40 °C ~ +85 °C

Antenna and electrical specifications

Standards	4G/3G/2G
Frequency (MHz)	824~960,1710~2690MHz
VSWR	~1.5~3.8
Peak Gain (dBi)	0~4dBi
Impedance (Ohm)	50
Polarisation	Linear
Max. Input Power (W)	25

SWE015

PN: SW19045EB56



General specification

Mounting type	Connector Mount
Connector type	SMA
Dimensions (mm)	47.3mm*φ8.5mm
Operating temperature	-40 °C ~ +85 °C

Antenna and electrical specifications

Standards	ISM-433MHz
Frequency (MHz)	433MHz
VSWR	<1.4
Peak Gain (dBi)	-0.55dBi
Impedance (Ohm)	50
Polarisation	Linear
Max. Input Power (W)	25

External Antenna

SWE016

PN: SW19046EB56



General specification

Mounting type	Connector Mount
Connector type	SMA
Dimensions (mm)	47.3mm*φ8.5mm
Operating temperature	-40 °C ~ +85 °C

Antenna and electrical specifications

Standards	LoRa
Frequency (MHz)	470-510MHz
VSWR	<2.48
Peak Gain (dBi)	-0.7-1.39dBi
Impedance (Ohm)	50
Polarisation	Linear
Max. Input Power (W)	25

SWE017

PN: SW19047EB56



General specification

Mounting type	Connector Mount
Connector type	SMA
Dimensions (mm)	47.3mm*φ8.5mm
Operating temperature	-40 °C ~ +85 °C

Antenna and electrical specifications

Standards	ISM-868MHz
Frequency (MHz)	868MHz
VSWR	<1.26
Peak Gain (dBi)	1.62dBi
Impedance (Ohm)	50
Polarisation	Linear
Max. Input Power (W)	25

SWE018

PN: SW19048EB56



General specification

Mounting type	Connector Mount
Connector type	SMA
Dimensions (mm)	47.3mm*φ8.5mm
Operating temperature	-40 °C ~ +85 °C

Antenna and electrical specifications

Standards	2G
Frequency (MHz)	880-960MHz, 1710-1880MHz
VSWR	<3.5, <3.5
Peak Gain (dBi)	-0.86~3.09dB, 0.71~3.36dB
Impedance (Ohm)	50
Polarisation	Linear
Max. Input Power (W)	25

External Antenna

SWE019

PN: SW19049EB56



General specification

Mounting type	Connector Mount
Connector type	SMA
Dimensions (mm)	47.3mm*φ8.5mm
Operating temperature	-40 °C ~ +85 °C

Antenna and electrical specifications

Standards	ISM-915MHz
Frequency (MHz)	915MHz
VSWR	<1.52
Peak Gain (dBi)	0.44dBi
Impedance (Ohm)	50
Polarisation	Linear
Max. Input Power (W)	25

SWE020

PN: SW19050EB56



General specification

Mounting type	Connector Mount
Connector type	SMA
Dimensions (mm)	47.3mm*φ8.5mm
Operating temperature	-40 °C ~ +85 °C

Antenna and electrical specifications

Standards	WiFi/BT
Frequency (MHz)	2400-2500MHz
VSWR	<1.57
Peak Gain (dBi)	1.75-3.71dBi
Impedance (Ohm)	50
Polarisation	Linear
Max. Input Power (W)	25

SWE021

PN: SW19051EB63



General specification

Mounting type	Connector Mount
Connector type	N-J
Dimensions (mm)	500 x φ22.5mm
Operating temperature	-40 °C ~ +85 °C

Antenna and electrical specifications

Standards	ISM-915MHz
Frequency (MHz)	915MHz
VSWR	~1.7
Peak Gain (dBi)	2dBi
Impedance (Ohm)	50
Polarisation	Linear
Max. Input Power (W)	25

External Antenna

SWE022

PN: SW19053EB56



General specification

Mounting type	Connector Mount
Connector type	SMA
Dimensions (mm)	159 x 17.5mm
Operating temperature	-40 °C ~ +85 °C

Antenna and electrical specifications

Standards	4G/3G/2G
Frequency (MHz)	700~960,1710~2690mhz
VSWR	~2-3
Peak Gain (dBi)	3~4dBi
Impedance (Ohm)	50
Polarisation	Linear
Max. Input Power (W)	25

SWE023

PN: SW19066EB56



General specification

Mounting type	Connector Mount
Connector type	SMA
Dimensions (mm)	51.5Xφ8mm
Operating temperature	-40 °C ~ +85 °C

Antenna and electrical specifications

Standards	ISM-868MHz
Frequency (MHz)	868MHz
VSWR	<1.26
Peak Gain (dBi)	1.62dBi
Impedance (Ohm)	50
Polarisation	Linear
Max. Input Power (W)	25

SWE024

PN: SW19067EB56



General specification

Mounting type	Connector Mount
Connector type	SMA
Dimensions (mm)	48.6Xφ8mm
Operating temperature	-40 °C ~ +85 °C

Antenna and electrical specifications

Standards	ISM-868MHz
Frequency (MHz)	868MHz
VSWR	<1.26
Peak Gain (dBi)	1.62dBi
Impedance (Ohm)	50
Polarisation	Linear
Max. Input Power (W)	25

External Antenna

SWE025

PN:SW19068EB56



General specification

Mounting type	Connector Mount
Connector type	SMA
Dimensions (mm)	220x28x8mm
Operating temperature	-40 °C ~ +85 °C

Antenna and electrical specifications

Standards	5G/4G/3G/2G/WiFi/BT/LoRa
Frequency (MHz)	433~6000MHz
VSWR	~2-3
Peak Gain (dBi)	0~3dBi
Impedance (Ohm)	50
Polarisation	Linear
Max. Input Power (W)	25

SWE026

PN:SW19070EB56



General specification

Mounting type	Connector Mount
Connector type	SMA
Dimensions (mm)	109mm*φ10mm
Operating temperature	-40 °C ~ +85 °C

Antenna and electrical specifications

Standards	3G/2G
Frequency (MHz)	824-960 MHz, 1710-2170 MHz
VSWR	< 3
Peak Gain (dBi)	824-960: -1.1~0.7 dBi 1710-2170: -1~2.4 dBi
Impedance (Ohm)	50
Polarisation	Linear
Max. Input Power (W)	25

SWE027

PN:SW19073EB56



General specification

Mounting type	Connector Mount
Connector type	SMA (M)
Dimensions (mm)	152.4 x 21.79 x 14.49
Operating temperature	-40 °C ~ +85 °C

Antenna and electrical specifications

Standards	5G/4G/3G/2G
Frequency (MHz)	600~6000Mhz
VSWR	~2-3
Peak Gain (dBi)	3~4dBi
Impedance (Ohm)	50
Polarisation	Linear
Max. Input Power (W)	25

External Antenna

SWE028

PN:SW19076EB56



General specification

Mounting type	Connector Mount
Connector type	SMA
Dimensions (mm)	51.5Xφ8mm
Operating temperature	-40 °C ~ +85 °C

Antenna and electrical specifications

Standards	3G/2G
Frequency (MHz)	880-960MHz, 1710-1880MHz
VSWR	<3.5
Peak Gain (dBi)	-0.86~3.09dB, 0.71~3.36dB
Impedance (Ohm)	50
Polarisation	Linear
Max. Input Power (W)	25

SWE029

PN:SW19077EB56



General specification

Mounting type	Connector Mount
Connector type	SMA
Dimensions (mm)	48.6Xφ8mm
Operating temperature	-40 °C ~ +85 °C

Antenna and electrical specifications

Standards	3G/2G
Frequency (MHz)	880-960MHz, 1710-1880MHz
VSWR	<3.5
Peak Gain (dBi)	-0.86~3.09dB, 0.71~3.36dB
Impedance (Ohm)	50
Polarisation	Linear
Max. Input Power (W)	25

SWE030

PN:SW20023EB56



General specification

Mounting type	Connector Mount
Connector type	SMA
Dimensions (mm)	109mm*φ10mm
Operating temperature	-40 °C ~ +85 °C

Antenna and electrical specifications

Standards	LoRa 868, LoRa 915
Frequency (MHz)	868MHz, 915 MHz
VSWR	1.74, 1.51
Peak Gain (dBi)	2.19dBi, 1.96 dBi
Impedance (Ohm)	50
Polarisation	Linear
Max. Input Power (W)	25

External Antenna

SWE032

PN:SW20035EB56



General specification

Mounting type	Connector Mount
Connector type	SMA
Dimensions (mm)	48.6Xφ8mm
Operating temperature	-40 °C ~ +85 °C

Antenna and electrical specifications

Standards	ISM-433MHz
Frequency (MHz)	433MHz
VSWR	1.26
Peak Gain (dBi)	-1.14dBi
Impedance (Ohm)	50
Polarisation	Linear
Max. Input Power (W)	25

SWE033

PN:SW20039EB56



General specification

Mounting type	Connector Mount
Connector type	SMA
Dimensions (mm)	152.4 x 21.79 x 14.49
Operating temperature	-40 °C ~ +85 °C

Antenna and electrical specifications

Standards	LoRa 868, LoRa 915
Frequency (MHz)	868MHz, 915 MHz
VSWR	1.89, 1.77
Peak Gain (dBi)	3.56dBi, 4.51 dBi
Impedance (Ohm)	50
Polarisation	Linear
Max. Input Power (W)	25

Combination Antenna

SWB001

PN:SW19012EB56



General specification

Mounting type	Adhesive & Screw
Connector type	SMA
Dimensions (mm)	81.0 (φ) x 24.9 (H) x 3000 (Line length)
Operating temperature	- 40 °C ~ + 80 °C

Antenna and electrical specifications (Cable 1-CELLULAR / LTE Antenna)

Standards	4G/3G/2G
Frequency (MHz)	699~960MHz, 1710~2170MHz, 2300~2690MHz
VSWR	<3.0
Peak Gain (dBi)	0~3.5dBi(699~960MHz) 0.5~3.5dBi(1710~2170MHz) 0.5~3.5dBi(2300~2690MHz)
Impedance (Ohm)	50
Polarisation	Linear
Max. Input Power (W)	25

General specification

Mounting type	Adhesive & Screw
Connector type	SMA
Dimensions (mm)	81.0 (φ) x 24.9 (H) x3000 (Line length)
Operating temperature	- 40 °C ~ + 80 °C

Antenna and electrical specifications (Cable 2-CELLULAR / LTE Antenna)

Standards	4G/3G/2G
Frequency (MHz)	699~960MHz, 1710~2170MHz, 2300~2690MHz
VSWR	<3.0
Peak Gain (dBi)	0.8~3.8dBi(699~960MHz) 2~5dBi(1710~2170MHz) 1.5~3dBi(2300~2690MHz)
Impedance (Ohm)	50
Polarisation	Linear
Max. Input Power (W)	25

General specification

Mounting type	Adhesive & Screw
Connector type	SMA
Dimensions (mm)	81.0 (φ) x 24.9 (H) x 3000 (Line length)
Operating temperature	- 40 °C ~ + 80 °C

Antenna and electrical specifications (Cable 3-GPS/GLONASS Antenna)

Standards	GPS/Glonass/Galileo/BeiDou
Frequency (MHz)	1575.42MHz, 1598~1610MHz
VSWR	<2.0
Peak Gain (dBi)	0.6dBi(1575.42MHz) 0.8~1dBi(1598~1610MHz)
Impedance (Ohm)	50
Polarisation	RHCP
Max. Input Power (W)	

Combination Antenna

SWB001LD

PN:SW19012EB56-2



General specification

Mounting type	Adhesive & Screw
Connector type	SMA Male
Dimensions (mm)	81.0 (φ) x 24.9 (H) x 3000 (Line length)
Operating temperature	- 40 °C ~ + 85 °C

Antenna and electrical specifications (Cable 1-CELLULAR / LTE Antenna)

Standards	4G/3G/2G
Frequency (MHz)	699~960MHz, 1710~2170MHz, 2300~2690MHz
VSWR	<3.0
Peak Gain (dBi)	0~3.5dBi(699~960MHz) 0.5~3.5dBi(1710~2170MHz) 0.5~3.5dBi(2300~2690MHz)
Impedance (Ohm)	50
Polarisation	Linear
Max. Input Power (W)	25

General specification

Mounting type	Adhesive & Screw
Connector type	SMA Male
Dimensions (mm)	81.0 (φ) x 24.9 (H) x 3000 (Line length)
Operating temperature	- 40 °C ~ + 85 °C

Antenna and electrical specifications (Cable 2-CELLULAR / LTE Antenna)

Standards	4G/3G/2G
Frequency (MHz)	699~960MHz, 1710~2170MHz, 2300~2690MHz
VSWR	<3.0
Peak Gain (dBi)	0.8~3.8dBi(699~960MHz) 2~5dBi(1710~2170MHz) 1.5~3dBi(2300~2690MHz)
Impedance (Ohm)	50
Polarisation	Linear
Max. Input Power (W)	25

Combination Antenna

SWB003

PN:SW19078EB56



General specification

Mounting type	Magnets
Connector type	FAKRA
Dimensions (mm)	81.0 (φ) x 14.32 (L)
Operating temperature	- 40 °C ~ + 80 °C

Antenna and electrical specifications (Cable 1-CELLULAR / LTE Antenna)

Standards	4G/3G/2G
Frequency (MHz)	698~960MHz, 1710~2170MHz, 2300~2690MHz
VSWR	<3.0
Peak Gain (dBi)	-0.5~2.5dBi(698~960MHz) -0.4~3.0dBi(1710~2170MHz) 0.6~3.2dBi(2300~2690MHz)
Impedance (Ohm)	50
Polarisation	Linear
Max. Input Power (W)	25

General specification

Mounting type	Magnets
Connector type	FAKRA
Dimensions (mm)	81.0 (φ) x 14.32 (L)
Operating temperature	- 40 °C ~ + 80 °C

Antenna and electrical specifications (Cable 2-GPS/Galileo/GLONASS Antenna)

Standards	GPS/Galileo/GLONASS
Frequency (MHz)	1575.42MHz, 1598--1610MHz
VSWR	<2.0
Peak Gain (dBi)	0.4dBi, 0.3~0.9dBi
Impedance (Ohm)	50
Polarisation	Linear
Max. Input Power (W)	25

Combination Antenna

SWB004

PN:SW20026EB56



General specification

Mounting type	Lock screw
Connector type	SMA
Dimensions (mm)	99.96 (φ) x 105.8 (H) x 3000 (Line length)
Operating temperature	- 40 °C ~ + 85 °C

Antenna and electrical specifications (Cable 1- Tested with 20cm cable length - RG174 with C20N)

Standards	4G/3G/2G
Frequency (MHz)	690~960MHz,1710~2690MHz
VSWR	<3.78,<2.8
Peak Gain (dBi)	0.17~4.05dBi,-0.37~3.23dBi
Impedance (Ohm)	50
Polarisation	Linear
Max. Input Power (W)	25

General specification

Mounting type	Lock screw
Connector type	SMA
Dimensions (mm)	99.96 (φ) x 105.8 (H) x 3000 (Line length)
Operating temperature	- 40 °C ~ + 85 °C

Antenna and electrical specifications (Cable 2- Tested with 20cm cable length - RG174 with C20N)

Standards	4G/3G/2G
Frequency (MHz)	690~960MHz,1710~2690MHz
VSWR	<2.84,<1.66
Peak Gain (dBi)	0.25~2.95 dBi,0.49~4.17dBi
Impedance (Ohm)	50
Polarisation	Linear
Max. Input Power (W)	25

General specification

Mounting type	Lock screw
Connector type	SMA
Dimensions (mm)	99.96 (φ) x 105.8 (H) x 3000 (Line length)
Operating temperature	- 40 °C ~ + 85 °C

Antenna and electrical specifications (Cable 3- Tested with 20cm cable length - RG174 with C20N)

Standards	GPS/Galileo/GLONASS
Frequency (MHz)	1575MHz,1602MHz
VSWR	1.23,1.38
Peak Gain (dBi)	0.4dBi,0.7dBi
Impedance (Ohm)	50
Polarisation	Linear
Max. Input Power (W)	25

Combination Antenna

SWB005

PN:SW20031EB56



General specification

Mounting type	Lock screw
Connector type	SMA
Dimensions (mm)	99.96 (φ) x 105.8 (H) x 3000 (Line length)
Operating temperature	- 40 °C ~ + 85 °C

Antenna and electrical specifications (Cable 1- Tested with 20cm cable length - RG174 with C20N)

Standards	4G/3G/2G
Frequency (MHz)	690~960MHz, 1710~2690MHz
VSWR	<3.7, <2.0
Peak Gain (dBi)	-1.3~1.6dBi , 0.5~2.6dBi
Impedance (Ohm)	50
Polarisation	Linear
Max. Input Power (W)	25

General specification

Mounting type	Lock screw
Connector type	SMA
Dimensions (mm)	99.96 (φ) x 105.8 (H) x 3000 (Line length)
Operating temperature	- 40 °C ~ + 85 °C

Antenna and electrical specifications (Cable 2- Tested with 20cm cable length - RG174 with C20N)

Standards	2.4G&5G WIFI
Frequency (MHz)	2400MHz~2500MHz, 5100~5900MHz
VSWR	<2.3, <2.5
Peak Gain (dBi)	3.1~4.4dBi , 2.7~5.2dBi
Impedance (Ohm)	50
Polarisation	Linear
Max. Input Power (W)	25

General specification

Mounting type	Lock screw
Connector type	SMA
Dimensions (mm)	99.96 (φ) x 105.8 (H) x 3000 (Line length)
Operating temperature	- 40 °C ~ + 85 °C

Antenna and electrical specifications (Cable 3- Tested with 20cm cable length - RG174 with C20N)

Standards	GPS&GLONASS&GALILEO&BEI DOU
Frequency (MHz)	1559MHz, 1575.42MHz, 1602MHz
VSWR	2.40, 1.77, 1.34
Peak Gain (dBi)	3.24dBi, 1.92dBi, 2.65dBi
Impedance (Ohm)	50
Polarisation	Linear
Max. Input Power (W)	25



Sunway Shanghai HQ

Add: Room 302, Building 65, 421 Hongcao Road, Xuhui District, Shanghai

Tel: +86-021-6484 2326

Fax: +86-021-6484 2328

Email: sales@sunny-way.com

Web: www.sunny-way.com

