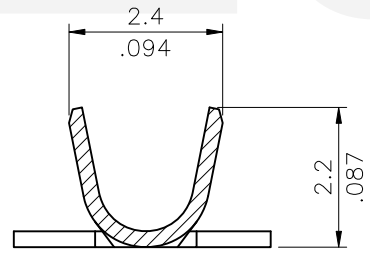
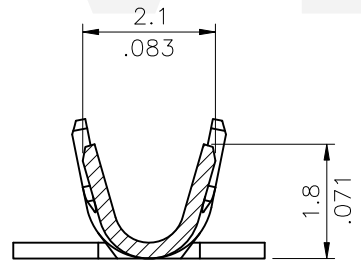
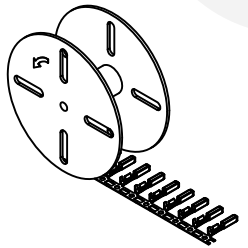


P/N:	Wire Range	Insulation Diameter	Reel Q'ty
CPB2T021PES	AWG #22~#26	1.40~1.70mm	10,000 PCS

Ordering Code:

CPB2 T02 1 P E S
 ① ② ③ ④ ⑤ ⑥

- ① Series No.
- ② Type: T02= AWG #22~#26
- ③ Plating:
 1= Tin Plated over Nickel
- ④ P= Phosphor Bronze
- ⑤ E= Pre-tinned
- ⑥ S= Receptacle Terminal



RoHS Compliant

SYM	NAME	DATE	REVISIONS	APPROVED BY:	DATE	UNIT: mm / inch	TITLE:	CviLux Corporation		
4							CPB2 Series Recept. Terminal	瀚荃股份有限公司 CviLux Corporation		
3										
2								DRAWING NO. CPB202SA PART NO. CPB2T021PES SCALE 4 / 1 SHEET 1 OF 1		
1	Clark	07/15-20	ECNT120185	Eisley	7/24-20'	.XX ± 0.20/.008	.X' ± r			
						.XXX ± 0.10/.004	.XX' ±			

CIVILUX
 2020.07.30
 ISSUED