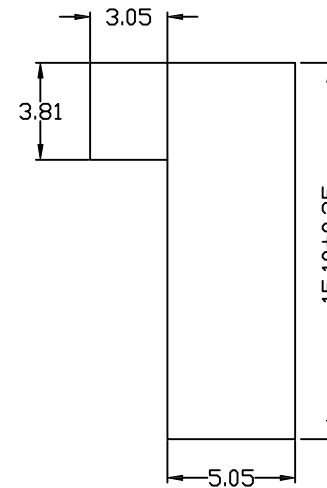
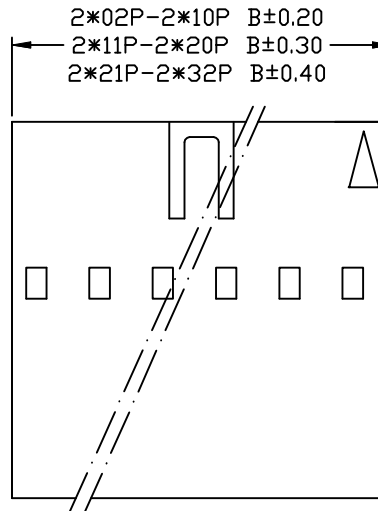
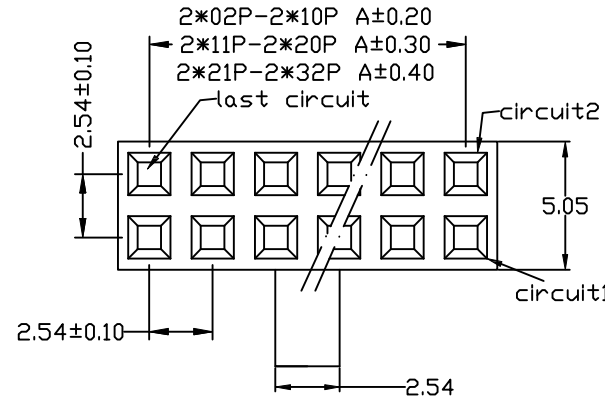


### SPECIFICATIONS

Current Rating: 3A AC/DC  
 Voltage Rating: 250V AC/DC  
 Contact Resistance: 20m Ω Max  
 Insulation Resistance: 1000M Ω Min  
 Withstanding Voltage: 1500V AC for 1 minute  
 Temperature Range: -25°C to +85°C  
 Insulator: PBT, UL94V-0

### ORDER INFORMATION

H 2549 - 2XX



No. of Contact	Dimensions	
	A	B
202	2.54	5.08
203	5.08	7.62
204	7.62	10.16
205	10.16	12.70
206	12.70	15.24
207	15.24	17.78
208	17.78	20.32
209	20.32	22.86
210	22.86	25.40
211	25.40	27.94
212	27.94	30.48
213	30.48	33.02
214	33.02	35.56
215	35.56	38.10
216	38.10	40.64
217	40.64	43.18
218	43.18	45.72
219	45.72	48.26
220	48.26	50.80
221	50.80	53.34
222	53.34	55.88
223	55.88	58.42
224	58.42	60.96
225	60.96	63.50
226	63.50	66.04
227	66.04	68.58
228	68.58	71.12
229	71.12	73.66
230	73.66	76.20
231	76.20	78.74
232	78.74	81.28

<b>MCT</b>	PART NO.	H2549-2XX	DRAWN	Andrew
	DRAWING NO.	H2549-2XX	CHECKED	Claudia
	DATE	2020/06/08	APPROVED	Brian

TITLE:	2.54mm Pitch Housing	REV.	A0	TOLERANCE	.X ±0.25 .XX ±0.20	SCALE	1:1	UNIT	mm
--------	----------------------	------	----	-----------	-----------------------	-------	-----	------	----