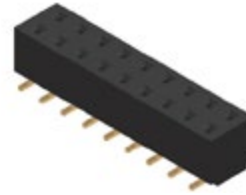
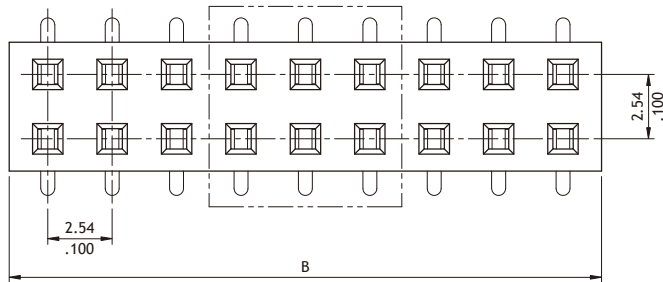


**CB41 Series 2.54mm(.100") Dual Row Female Headers**

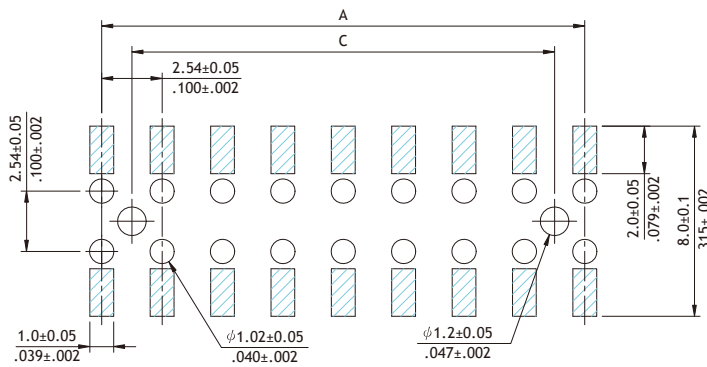
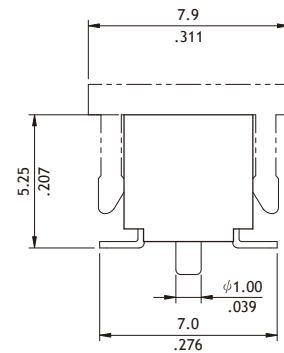
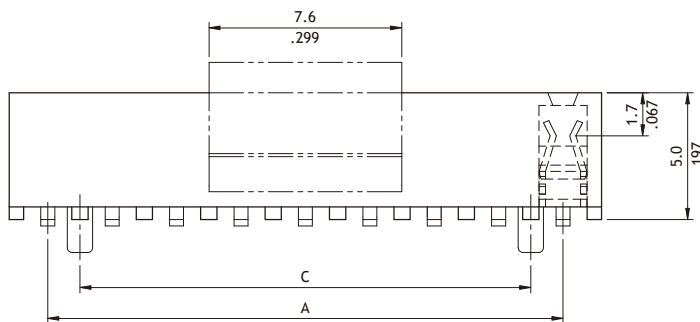
© Mates with CH81, CH84, CH85 and CH88 series



**RoHS** Compliant



Dim. A = 2.54 X No. of Spaces  
 Dim. B = Dim. A + 3.4  
 Dim. C = Dim. A - 2.54



Recommended PCB Layout

**Ordering Code**

①	②	③	④	⑤	⑥
CB 4 1	8 0	2	M	1	R 0

- ① Series No.
- ② No. of Circuits: 04 to 80
- ③ Plating Code:  
2 = Gold flash over Nickel
- ④ Tail Style: M = SMT Type
- ⑤ Color: 1 = Black
- ⑥ Packing Options:  
 P0 = With Pad & Without Pegs (Tube Packing)  
 PP = With Pad & With Pegs (Tube Packing)  
 R0 = With Pad & Without Peg (Reel Packing)  
 RP = With Pad & With Pegs (Reel Packing)  
 \*Special options consult manufacturer