

**FEATURES:**

- Wide Input Range 2:1
- 1600 Vdc Isolation
- Efficiency up to 91%
- Soft Start
- Remote On/Off Function
- No Minimum Load Required
- -40°C to +85°C Operating Temperature Range
- Short Circuit & Over Voltage Protection
- DIP 24 Package
- Low No Load Input Current



### Models

#### Single output

Model	Input Voltage (V)	Output Voltage (V)	Output Current max (mA)	Isolation (VDC)	Maximum Capacitive load ( $\mu$ F)	Efficiency (%)
AM12T-1202SZ	9-18	2.5	3500	1600	2000	85
AM12T-1203SZ	9-18	3.3	3500	1600	2000	87
AM12T-1205SZ	9-18	5	2400	1600	2000	89
AM12T-1212SZ	9-18	12	1000	1600	430	90
AM12T-1215SZ	9-18	15	800	1600	300	90
AM12T-2402SZ	18-36	2.5	3500	1600	2000	85
AM12T-2403SZ	18-36	3.3	3500	1600	2000	87
AM12T-2405SZ	18-36	5	2400	1600	2000	89
AM12T-2412SZ	18-36	12	1000	1600	430	90
AM12T-2415SZ	18-36	15	800	1600	300	90
AM12T-4802SZ	36-75	2.5	3500	1600	2000	84
AM12T-4803SZ	36-75	3.3	3500	1600	2000	88
AM12T-4805SZ	36-75	5	2400	1600	2000	89
AM12T-4812SZ	36-75	12	1000	1600	430	88
AM12T-4815SZ	36-75	15	800	1600	300	89

### Models

#### Dual output

Model	Input Voltage (V)	Output Voltage (V)	Output Current max (mA)	Isolation (VDC)	Maximum Capacitive load ( $\mu$ F)	Efficiency (%)
AM12T-1212DZ	9-18	$\pm$ 12	$\pm$ 500	1600	$\pm$ 200	90
AM12T-1215DZ	9-18	$\pm$ 15	$\pm$ 400	1600	$\pm$ 120	91
AM12T-2412DZ	18-36	$\pm$ 12	$\pm$ 500	1600	$\pm$ 200	90
AM12T-2415DZ	18-36	$\pm$ 15	$\pm$ 400	1600	$\pm$ 120	91
AM12T-4812DZ	36-75	$\pm$ 12	$\pm$ 500	1600	$\pm$ 200	88
AM12T-4815DZ	36-75	$\pm$ 15	$\pm$ 400	1600	$\pm$ 120	89

NOTE: All specifications in this datasheet are measured at an ambient temperature of 25°C, humidity<75%, nominal input voltage and at rated output load unless otherwise specified

**Input Specifications**

Parameters	Nominal	Typical	Maximum	Units
Voltage range	12	9-18		VDC
	24	18-36		VDC
	48	36-48		VDC
Filter	$\pi$ (Pi) Network			
Turn on Transient process time		250		$\mu$ s
Transient response deviation		$\pm$ 3		%
Start up time	Nominal Vin and constant resistive load		20	ms
Absolute Maximum Rating	12 Vin models	-0.7-36		VDC
	24 Vin models	-0.7-50		VDC
	48 Vin models	-0.7-100		VDC

## Input Specifications (continued)

Parameters	Nominal	Typical	Maximum	Units
Peak Input Voltage time			1000	ms
Input reflected ripple current		20		mA p-p
Quiescent Current		15		mA
On/Off Control	ON – High (3.0 ... 12Vdc) or open circuit; OFF – Low (0 ... 1.2Vdc) or Short circuit pin1 and pin 2/3 OFF idle current: 5.0 mA typ			

## Isolation Specifications

Parameters	Conditions	Typical	Rated	Units
Tested I/O voltage	60 sec		1600	VDC
Tested Case/Input and Output Resistance		1600		VDC
Capacitance		>1000		MOhm
		1200		pF

## Output Specifications

Parameters	Conditions	Typical	Maximum	Units
Voltage accuracy		±1.2		%
Voltage balance*	Dual output	±5		%
Line voltage regulation	HL-LL	±0.5		%
Load voltage regulation (Single)	0% Load to Full Load	±0.5		%
Load voltage regulation (Dual)	0% Load to Full Load	±1.0		%
Over voltage protection	Zener diode clamp			
Over current protection	Full Load	150		%
Short Circuit protection	Continuous			
Short circuit restart	Auto recovery			
Ripple & Noise**			85	m Vp-p

\* One of the outputs is at 100% load while the other output is at 25% to 100% load.

\*\* Measured at 20MHz bandwidth with a 1uF ceramic capacitor.

## General Specifications

Parameters	Conditions	Typical	Maximum	Units
Switching frequency	100% load	330		KHz
Operating temperature	Full Load with Derating above 60°C	-40 to +85		°C
Storage temperature		-40 to +125		°C
Max Case temperature			100	°C
Temperature coefficient		±0.02		%/°C
Derating	Above 60°C	2.5		%/°C
Cooling	Free air convection			
Humidity			95	% RH
Case material	Nickel-coated Copper			
Potting material	UL94V-0 rated			
Weight		18.0		g
Dimensions (L x W x H)	Tolerance ±0.5 mm or ±0.02 inches	1.25 x 0.80 x 0.40 inches 31.80 x 20.30 x 10.20 mm		
MTBF	>1 000 000 hrs (MIL-HDBK -217F, Ground Benign, t=+25°C)			

## Safety Specifications

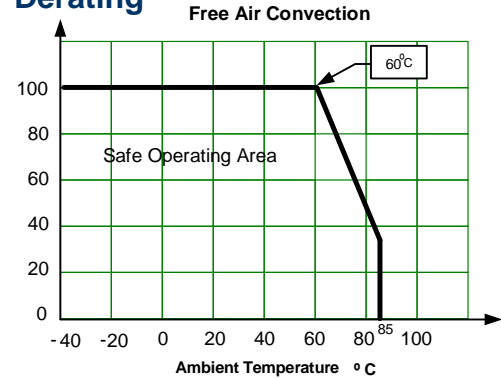
Parameters	
Standards	Design to meet IEC/EM/UL 62368-1
	EN55032 Class A, with the recommended EMC circuit
	IEC61000-4-2, Perf. Criteria B
	IEC61000-4-3, Perf. Criteria A
	IEC61000-4-4, Perf. Criteria A
	IEC61000-4-5, Perf. Criteria A (external 330uF/100V cap required)

IEC61000-4-6, Perf. Criteria A  
IEC61000-4-8, Perf. Criteria A

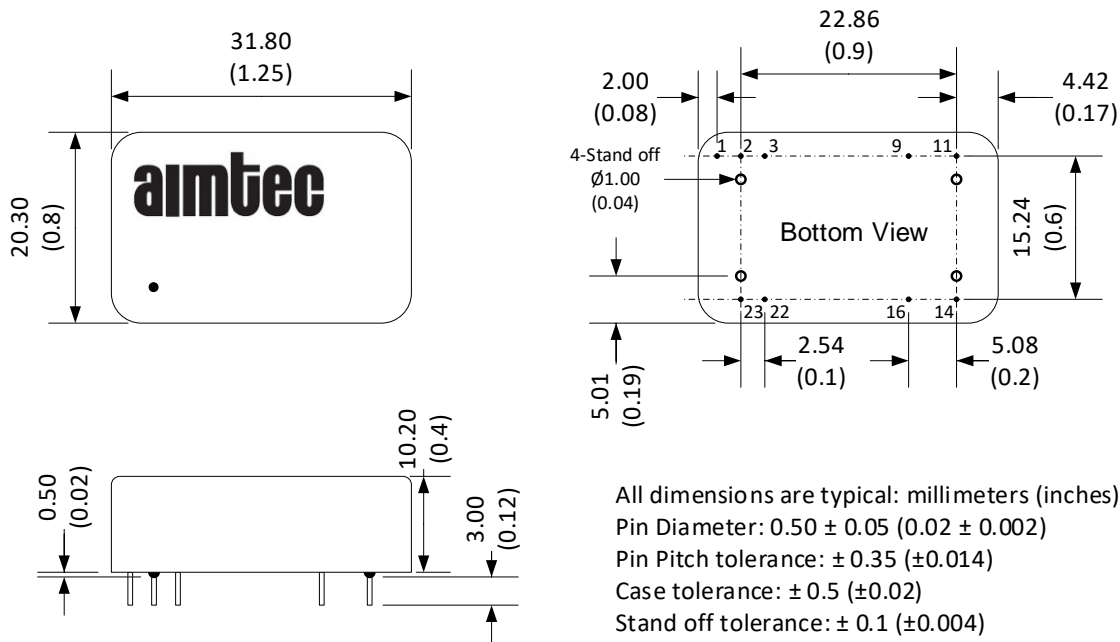
### Pin Out Specifications

Pin	Single	Dual
1	Remote On/Off	Remote On/Off
2	-V Input	-V Input
3	-V Input	-V Input
9	No Pin	Common
11	N.C.	-V Output
14	+V Output	+V Output
16	-V Output	Common
22	+V Input	+V Input
23	+V Input	+V Input

### Derating

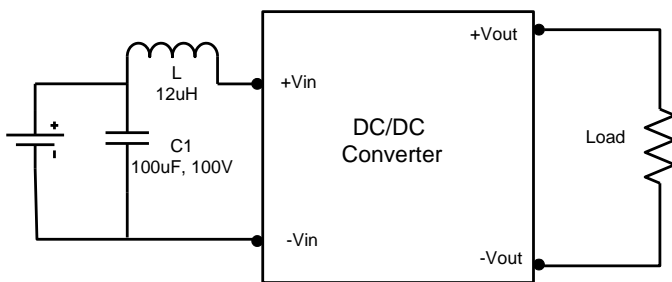


### Dimensions

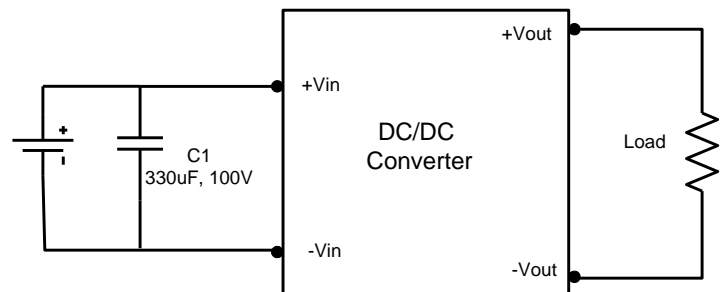


### Test Circuits

Conducted Emissions :



Surge:



**NOTE:** 1. Datasheets are updated as needed and as such, specifications are subject to change without notice. Once printed or downloaded, datasheets are no longer controlled by Aimtec; refer to [www.aimtec.com](http://www.aimtec.com) for the most current product specifications. 2. Product labels shown, including safety agency certifications on labels, may vary based on the date manufactured. 3. Mechanical drawings and specifications are for reference only. 4. All specifications are measured at an ambient temperature of 25°C, humidity < 75%, nominal input voltage and at rated output load unless otherwise specified. 5. Aimtec may not have conducted destructive testing or chemical analysis on all internal components and chemicals at the time of publishing this document. CAS numbers and other limited information are considered proprietary and may not be available for release. 6. This product is not designed for use in critical life support systems, equipment used in hazardous environments, nuclear control systems or other such applications which necessitate specific safety and regulatory standards other than the ones listed in this datasheet. 7. Warranty is in accordance with Aimtec's standard Terms of Sale available at [www.aimtec.com](http://www.aimtec.com).