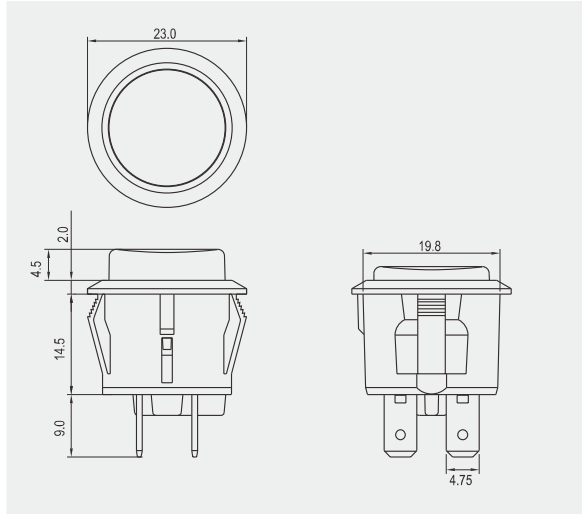


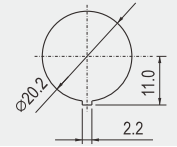
R13-527



IP65



Rating
10A 125V/6A 250V AC 1/2HP 125V-250V AC
Contact resistance
50mΩ Max
Insulation resistance
DC 500V 100MΩ Min
Dielectric strength
AC 1000V 1 minute
Cut-out

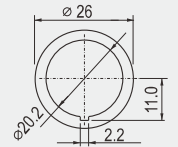


0.7~3.0 mm max

FEATURES

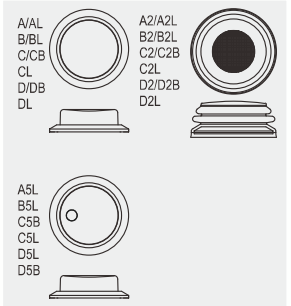
- * MATERIAL: Frame is nylon (UL flame:94V-2). Terminals are silver plated brass.
- * Illuminated actuators are molded in PC, available with red, amber, green, blue and white colors.
- * Snap-in mounting, easy to install switch into panel.
- * Watertight and dustproof to fit IP65.

Cut-out for X2 BUTTON



0.7~2.5 mm max

BUTTON



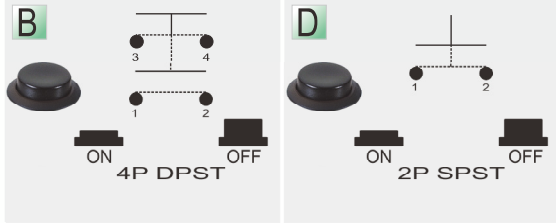
Ordering number instruction

R13-527 -

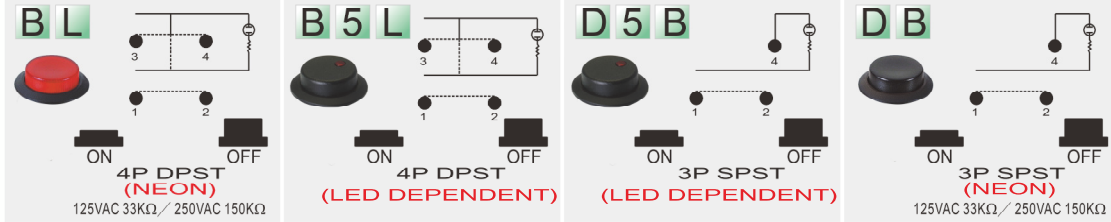
FUNCTION	TERMINAL
----------	----------

Non-illuminated button (不帶燈)

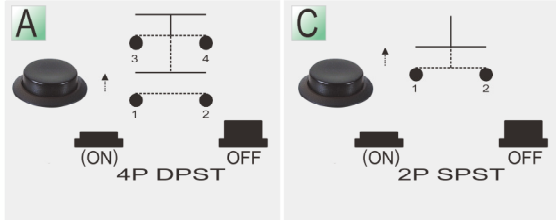
0 2 .187" SQ



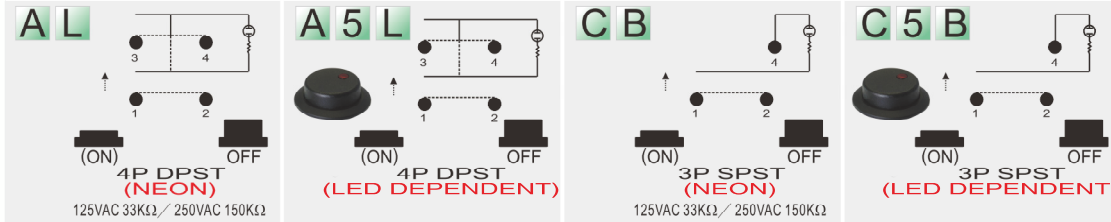
Illuminated / Different button (帶燈/按鈕不同)



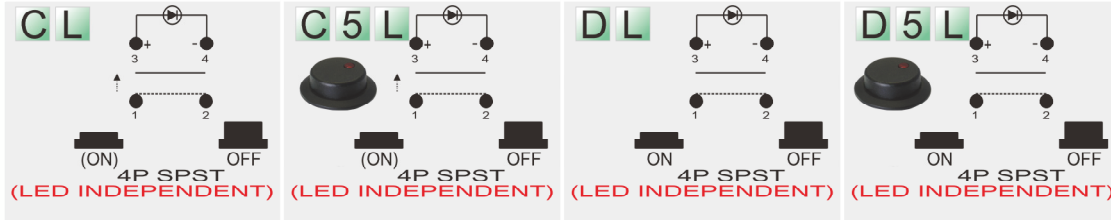
Momentary / Non-illuminated button (彈回/不帶燈)



Momentary / Non-illuminated / Different button (彈回/不帶燈/按鈕不同)



Independent circuit (獨立迴路)



Watertight (防水)

