

Specifications

Current Rating: 3A AC,DC
 Contact Resistance: 13mΩ Max
 Insulation Resistance: 1000MΩ Min
 Withstanding Voltage: 500V AC/minute
 Temperature Range: -55°C ~ +105°C

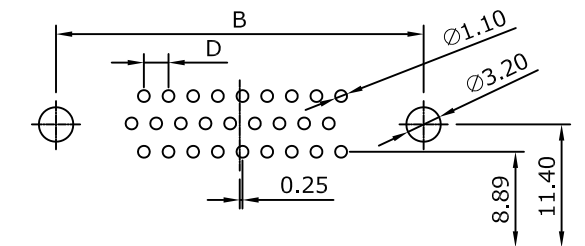
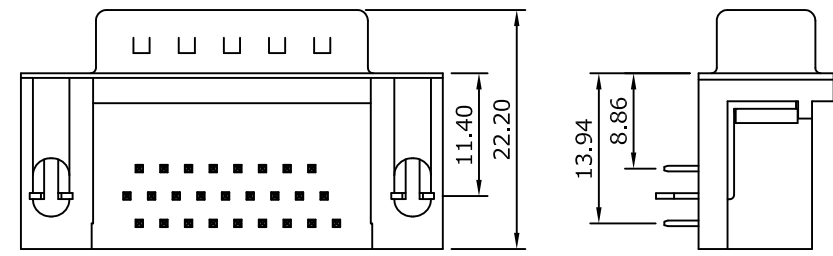
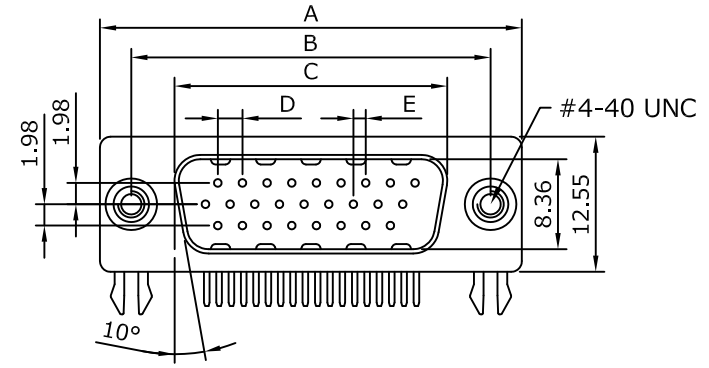
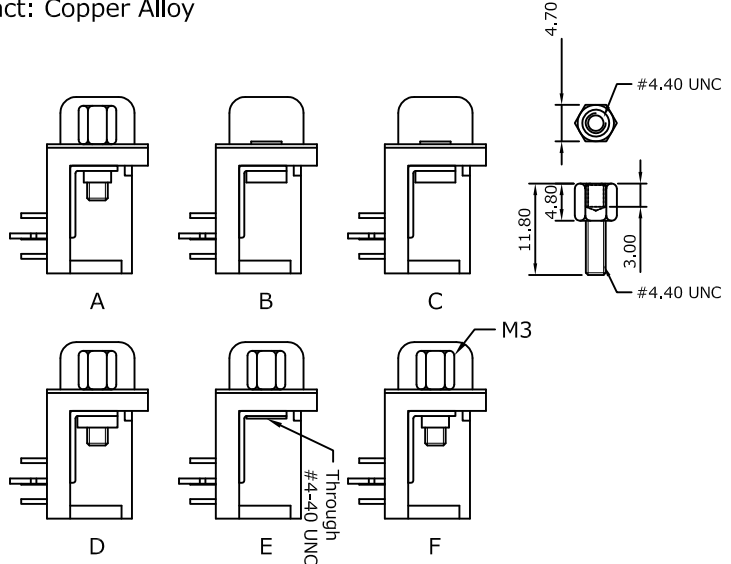
Material

Insulator: P.B.T, UL94V-0
 Contact: Copper Alloy

ORDER INFORMATION



VH	R	X	1	-	M	XX	1	X
D-SUB High Density Type	Right Angle Type	RoHS + P.B.T	Male	No. of Contacts	Fork Grounding	A:Jack Screw Insert, Height=4.8 B:Rivet C:Rivet & Jack Screw Attached D:Rivet & Jack Screw Insert, Height=4.8 E:Front Rivet #4-40+Jack Screw Insert, Height=4.8 F:Front Rivet M3+Jack Screw, Height=4.8		
G0:Gold Flash	S0:Selective Flash							
G1:Gold 3u"	S1:Selective 3u"							
G2:Gold 5u"	S2:Selective 5u"							
G3:Gold 10u"	S3:Selective 10u"							
G4:Gold 15u"	S4:Selective 15u"							
G5:Gold 30u"	S5:Selective 30u"							



Recommended PCB Layout
 (PCB TOLERANCE ±0.05)

Positions	A	B	C	D	E
15	30.81	24.99	16.92	2.29	1.145
26	39.14	33.32	25.25	2.29	1.145
44	53.04	47.04	38.96	2.29	1.145
62	69.32	63.50	55.42	2.41	1.205

			MCT		PART NO. VHRX1-MXX1X		DATA	2008/07/20		
					DRAWING NO. VHRX1-MXX1X		DRAWN	Sayid		
					CUSTOMER P/N		APPROVED	Max		
REV.	DESCRIPTION	DATA	TITLE: D-SUB High Density R/A Type Footprint 7.2mm	REV. A	TOLERANCE	.X ±0.25 .XX ±0.20	SCALE	FREE	UNIT	mm